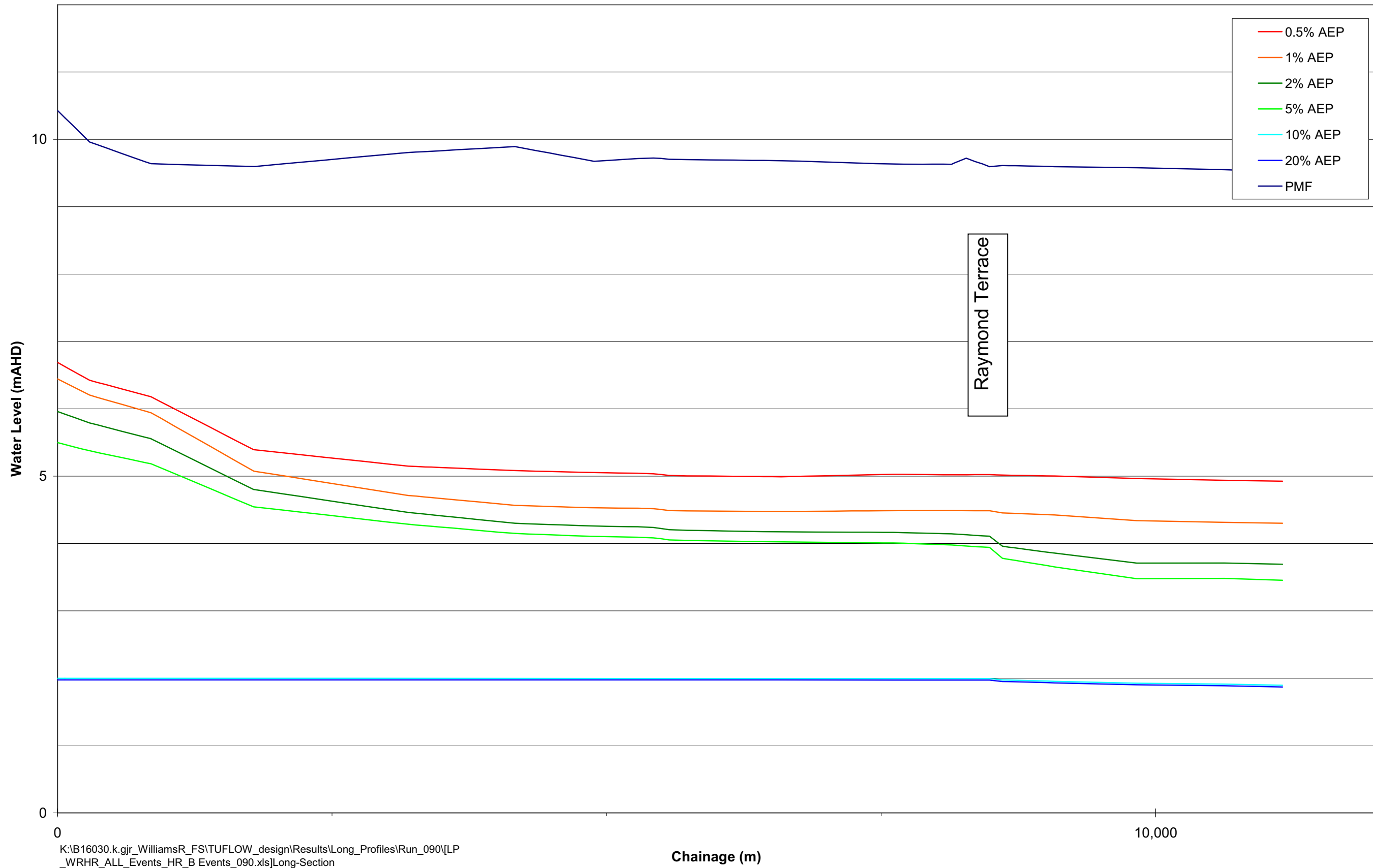
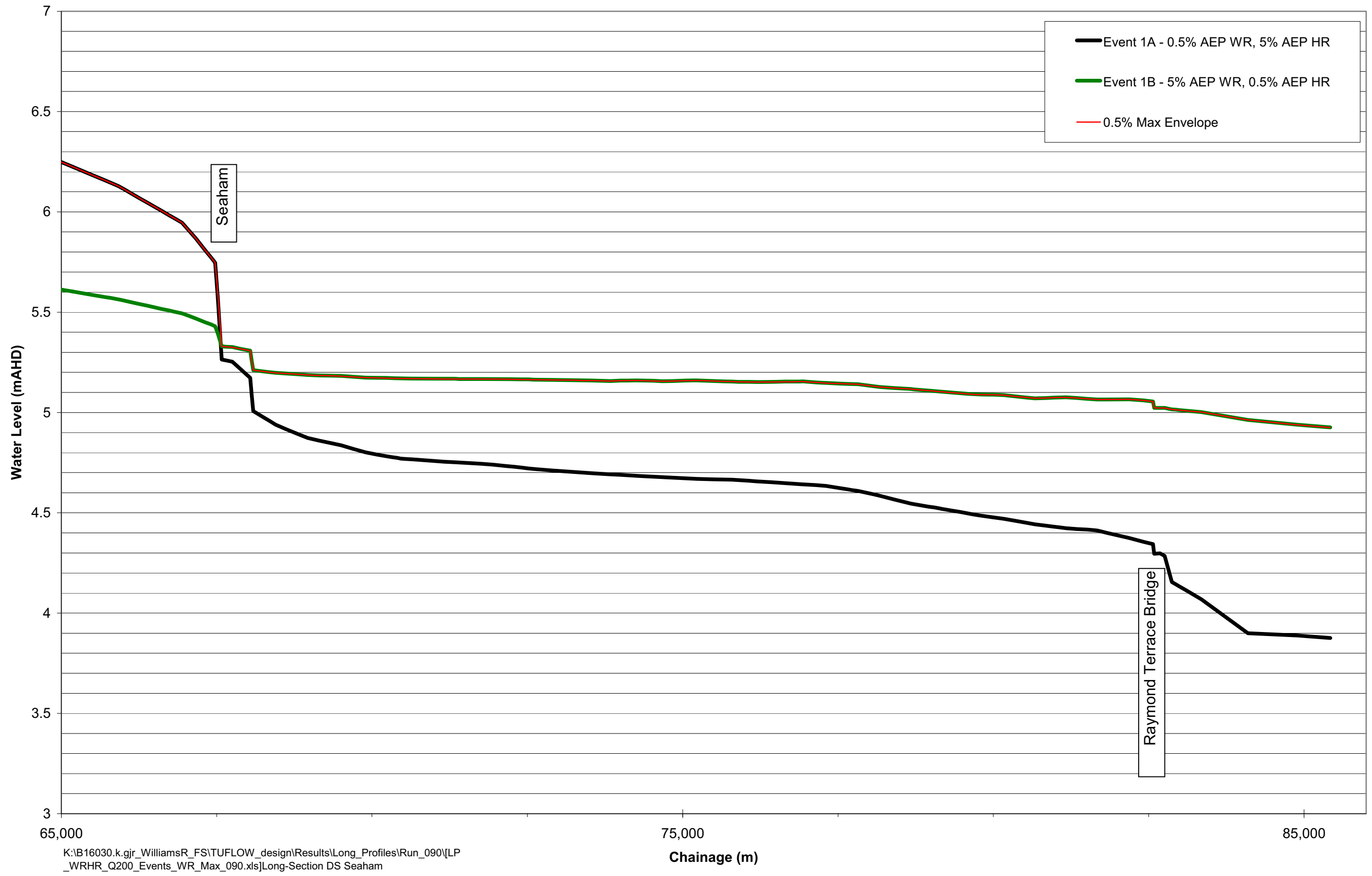


Drawing 72: Long Section Williams River – All Design Events

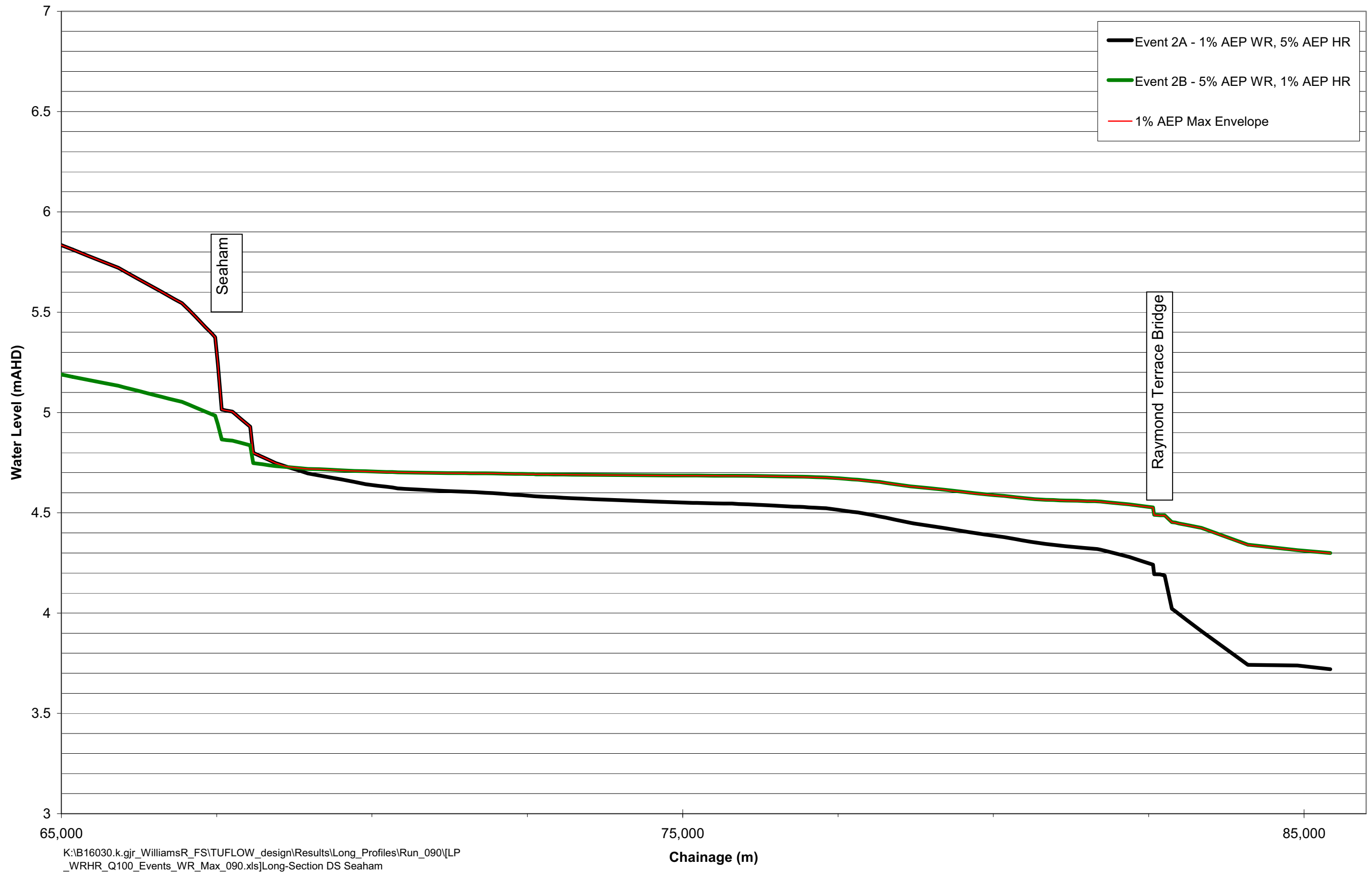


K:\B16030.k.gjr_WilliamsR_FS\TUFLOW_design\Results\Long_Profiles\Run_090\LP_WRHR_ALL_Events_HR_B_Events_090.xls]Long-Section

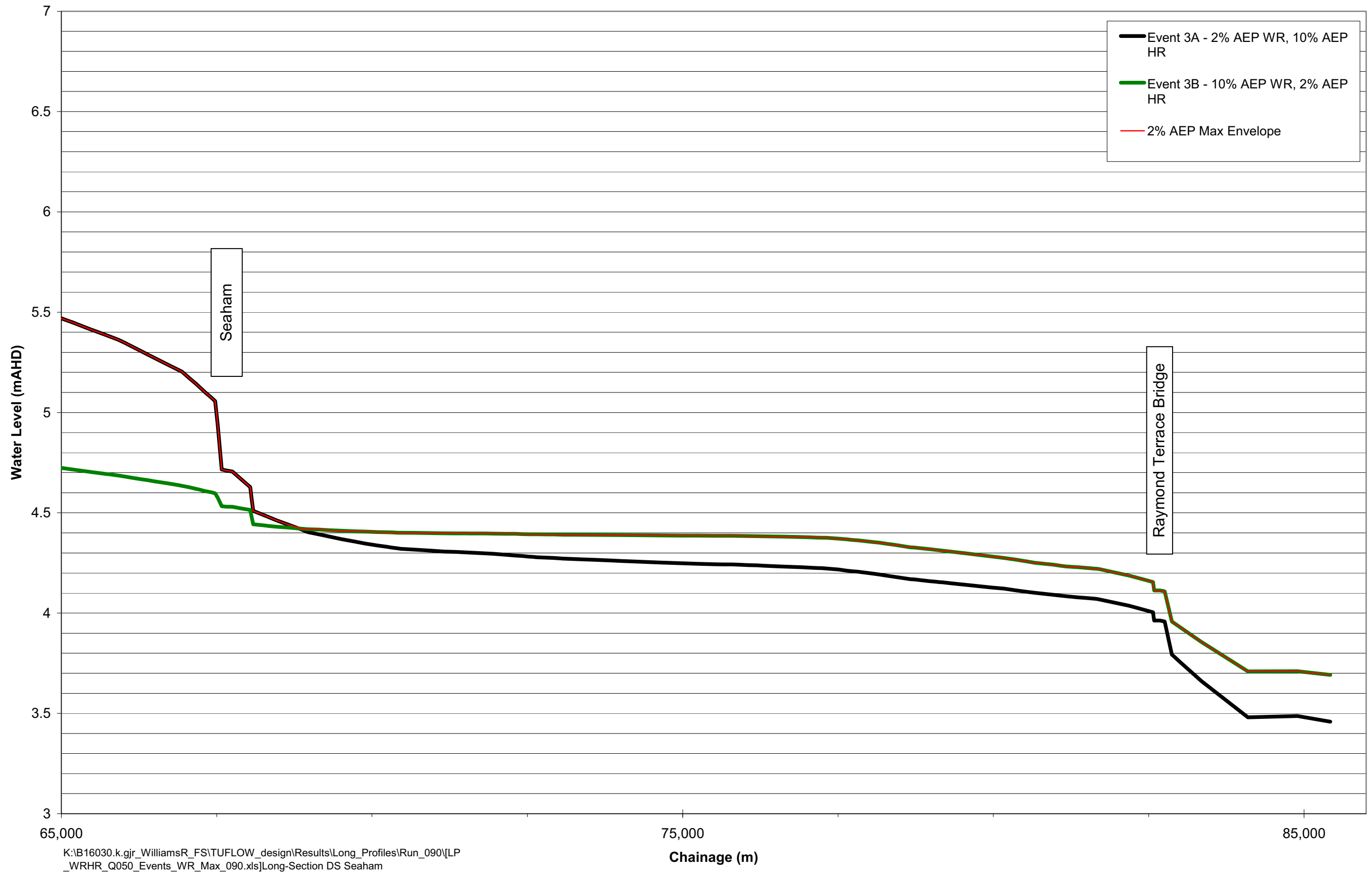
Drawing 73: Long Section Hunter River – All Design Events



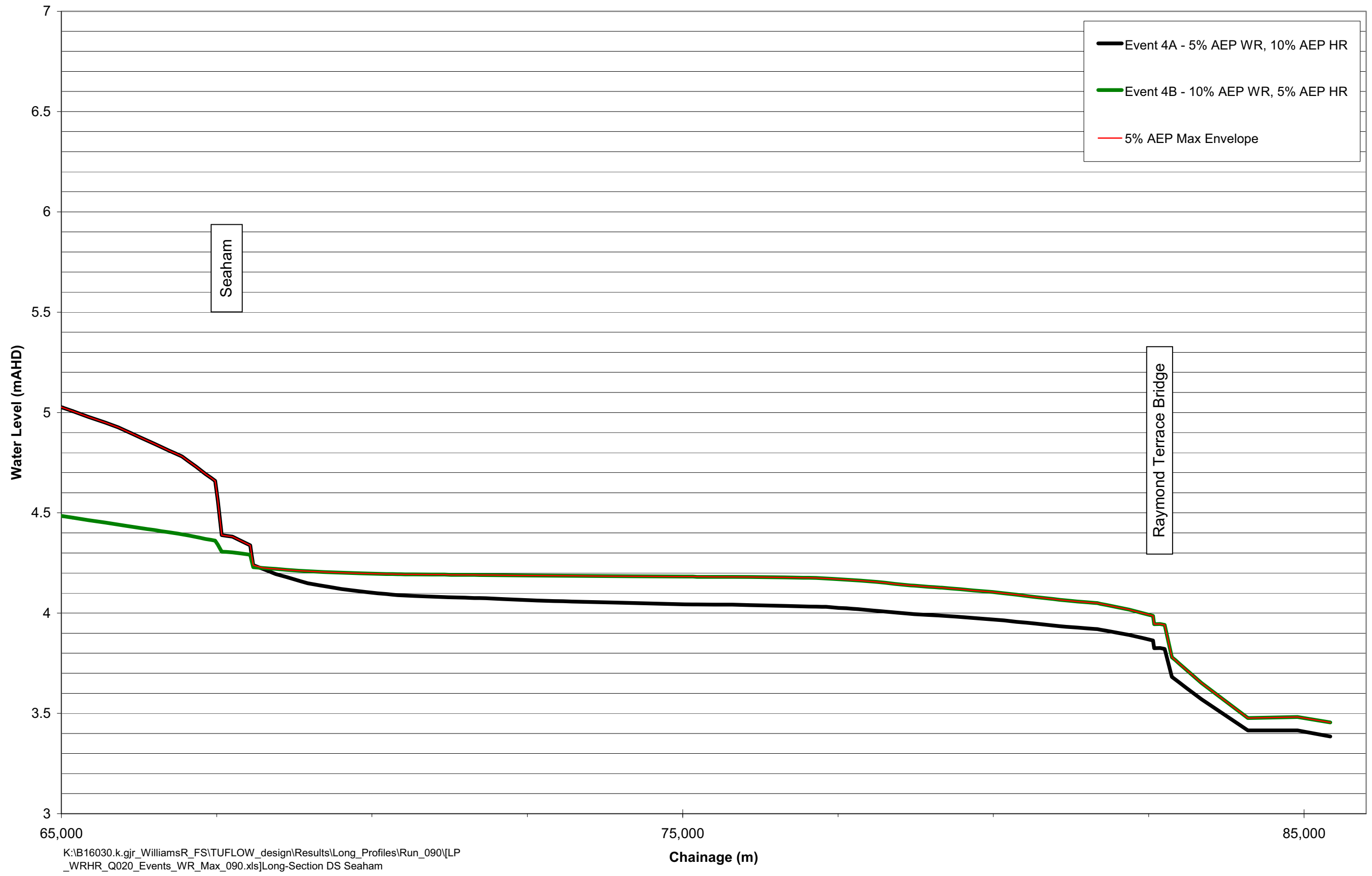
Drawing 74: Long Section Lower Williams River – 0.5% Design Events



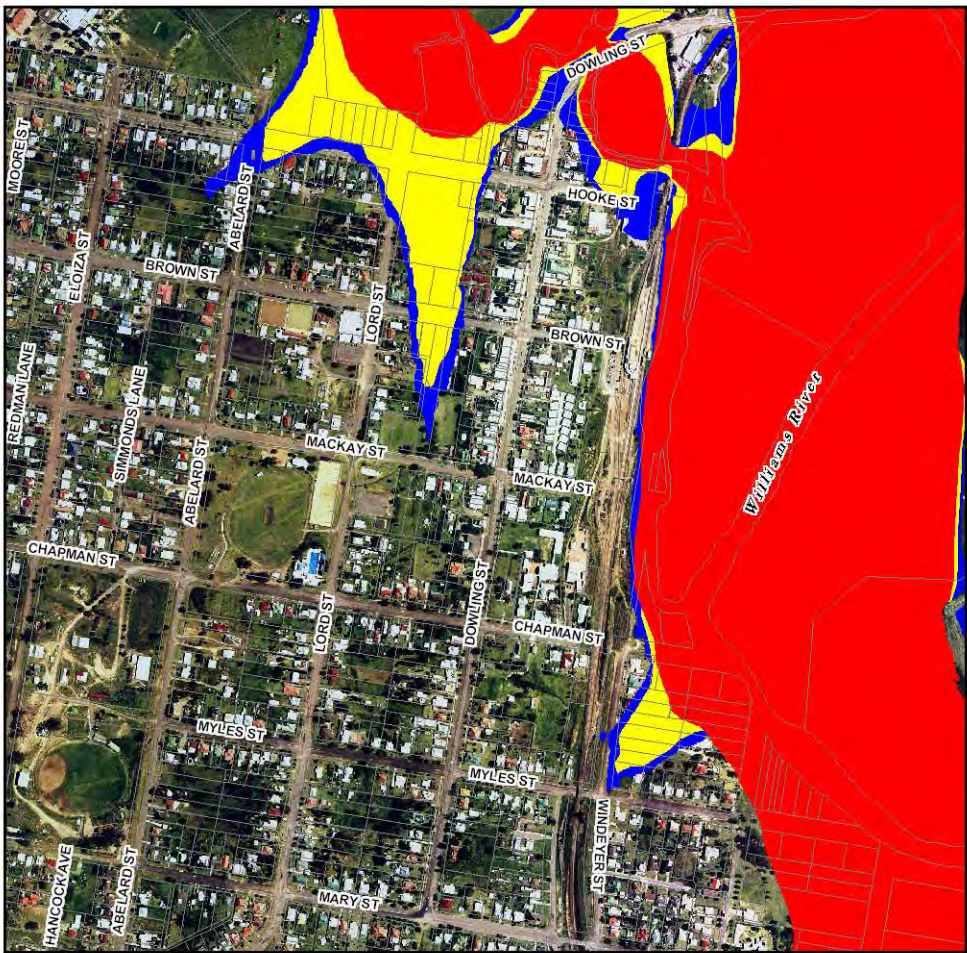
Drawing 75: Long Section Lower Williams River – 1% Design Events



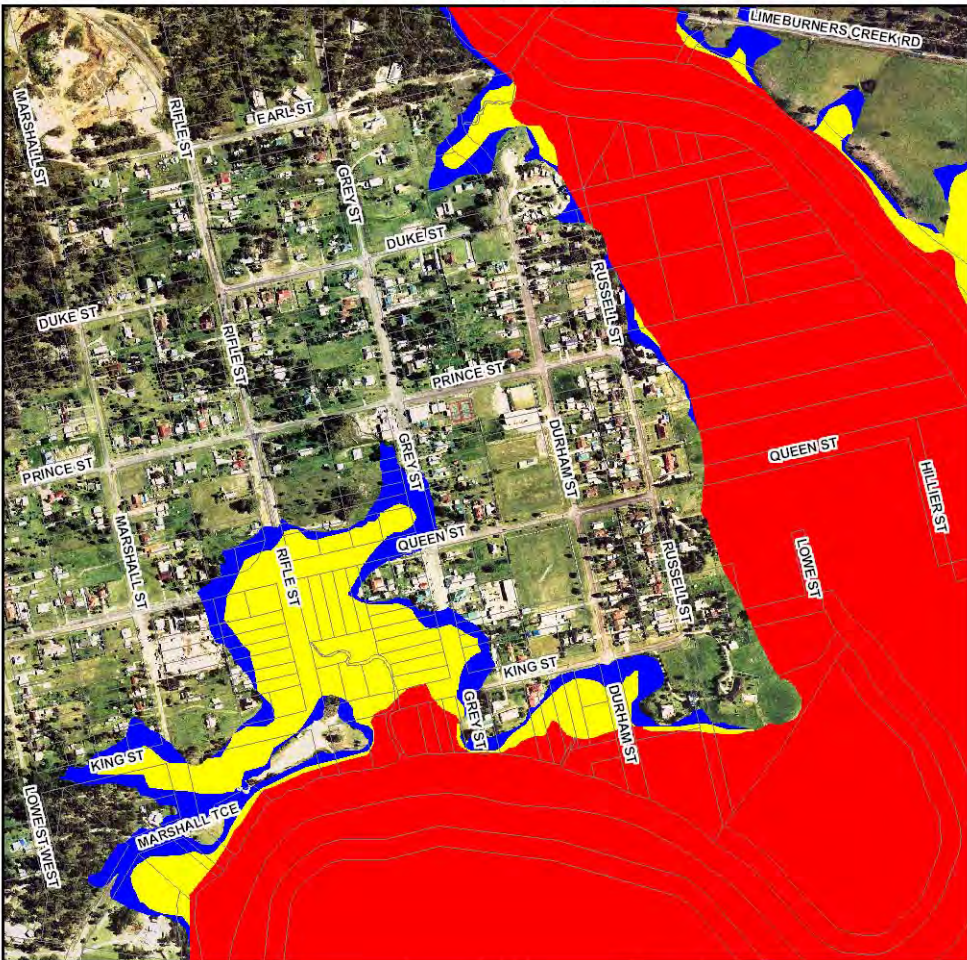
Drawing 76: Long Section Lower Williams River – 2% Design Events



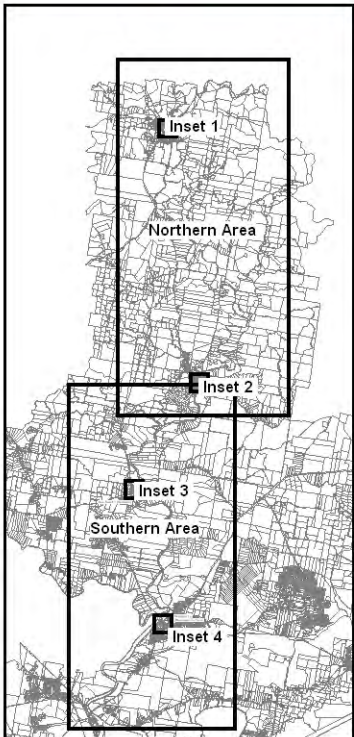
Drawing 77: Long Section Lower Williams River – 5% Design Events



Inset 1 (Dungog)



Inset 2 (Clarence Town)



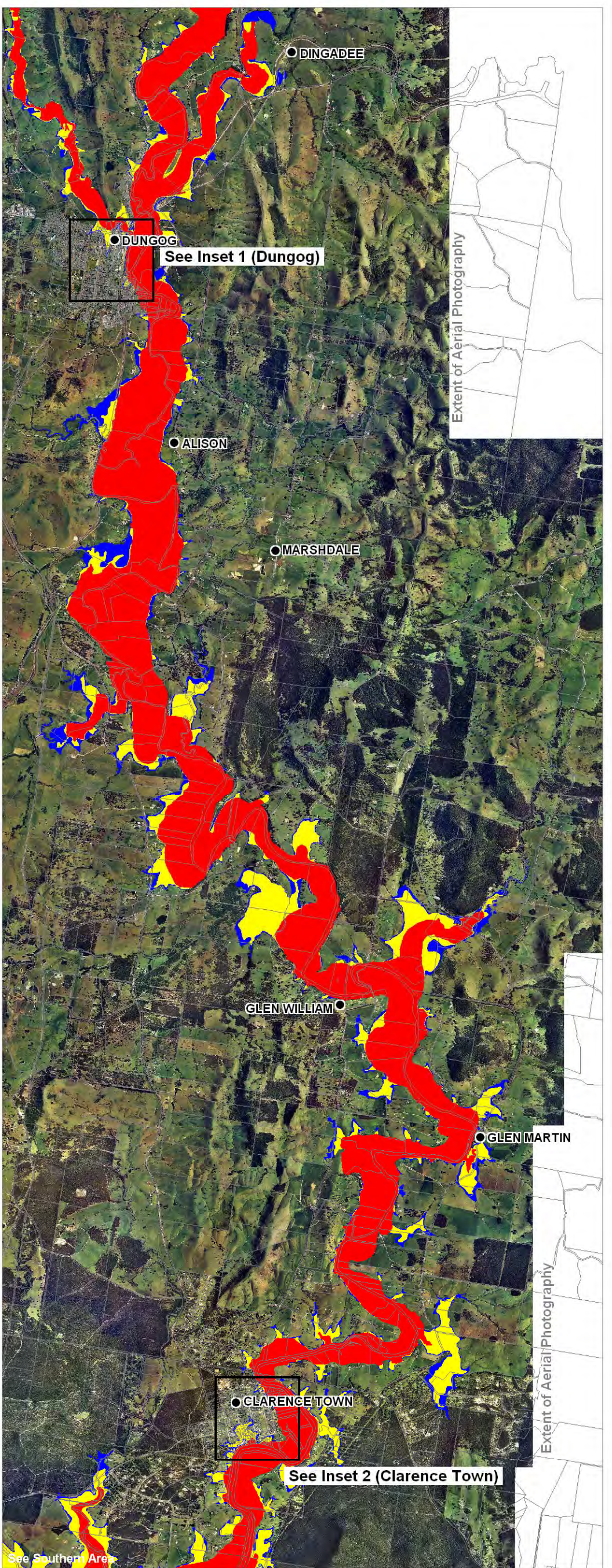
NOTE: Flood Model Simulations include future sea level rise

LEGEND

- Towns
- ▭ Cadastral Boundaries

Hydraulic Category

- Floodway
- Flood Storage
- Flood Fringe

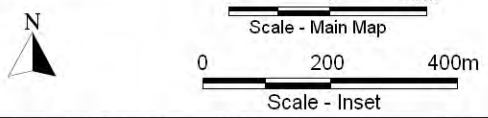


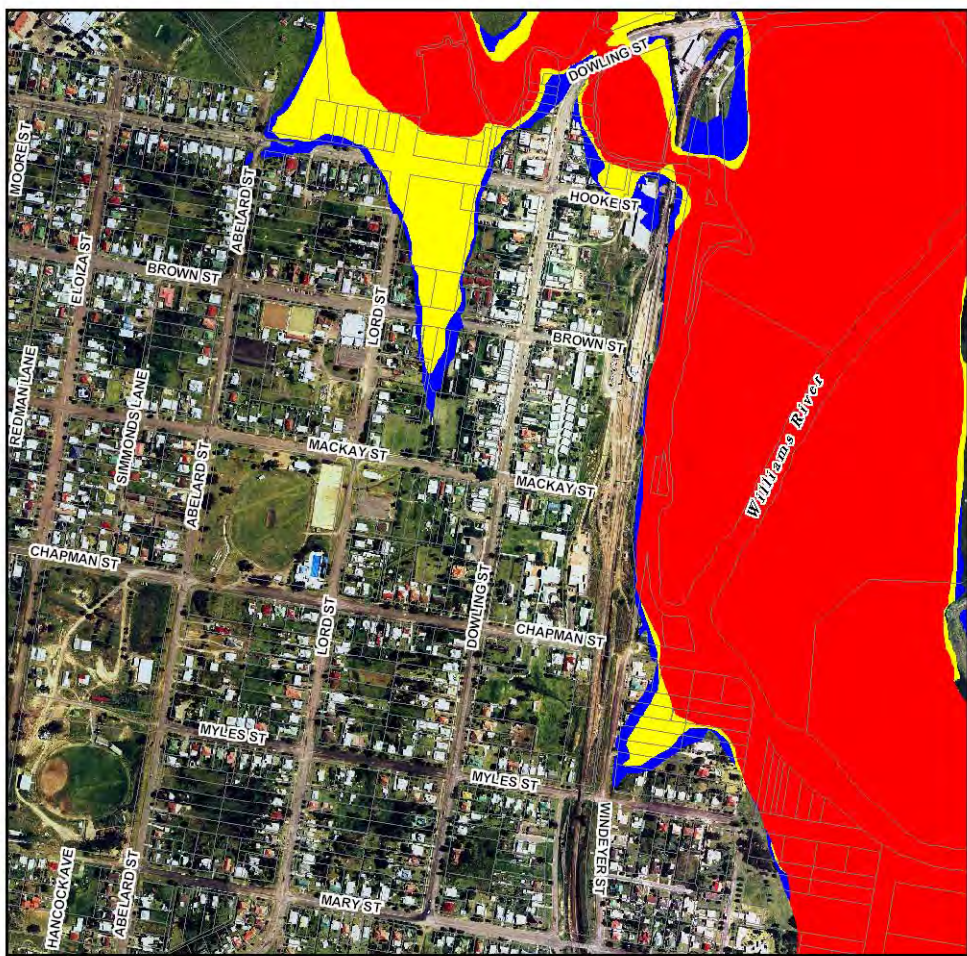
Title:
**Williams River 0.5% AEP Flood Event
Northern Area - Provisional Hydraulic Category**

Figure:
Drawing 78

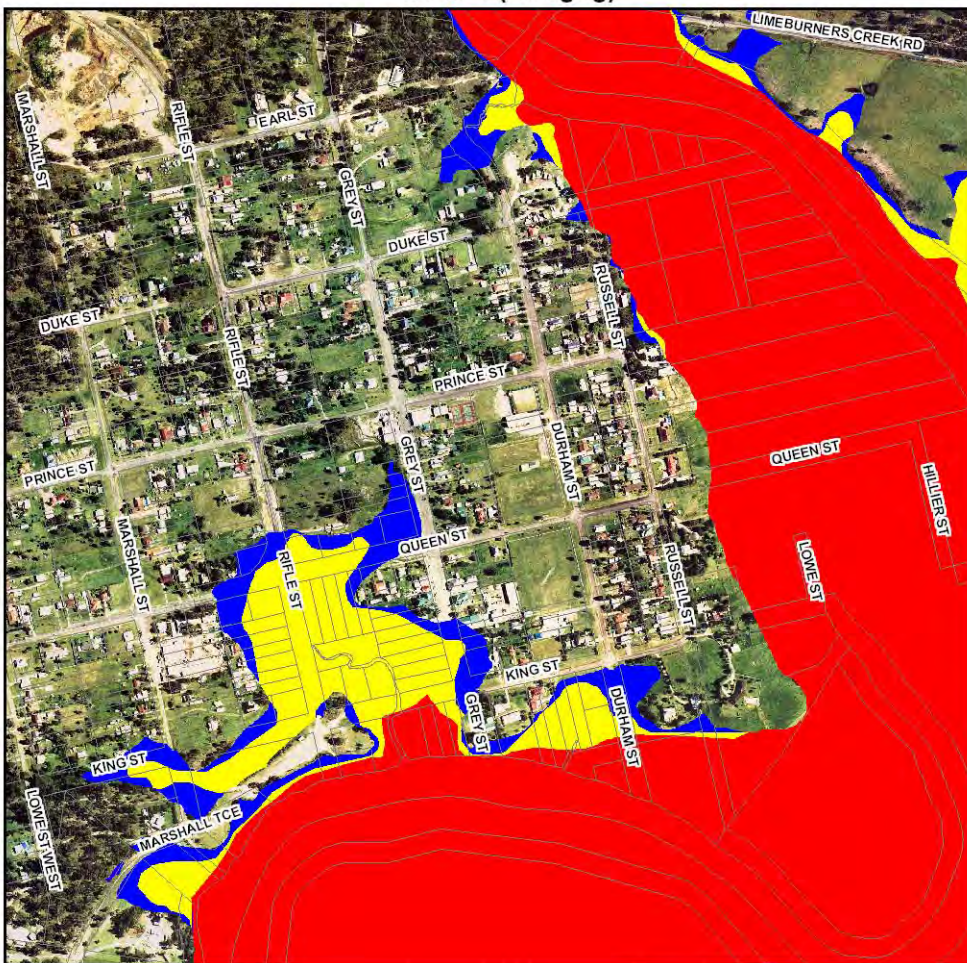
Rev:
A

BMT WBM endeavours to ensure that the information provided in this map is correct at the time of publication. BMT WBM does not warrant, guarantee or make representations regarding the currency and accuracy of information contained in this map.

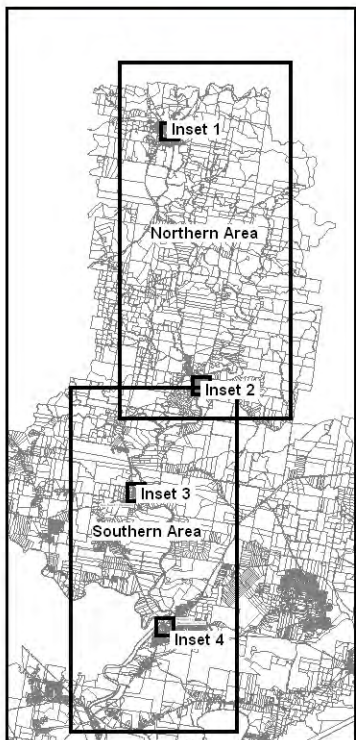




Inset 1 (Dungog)



Inset 2 (Clarence Town)



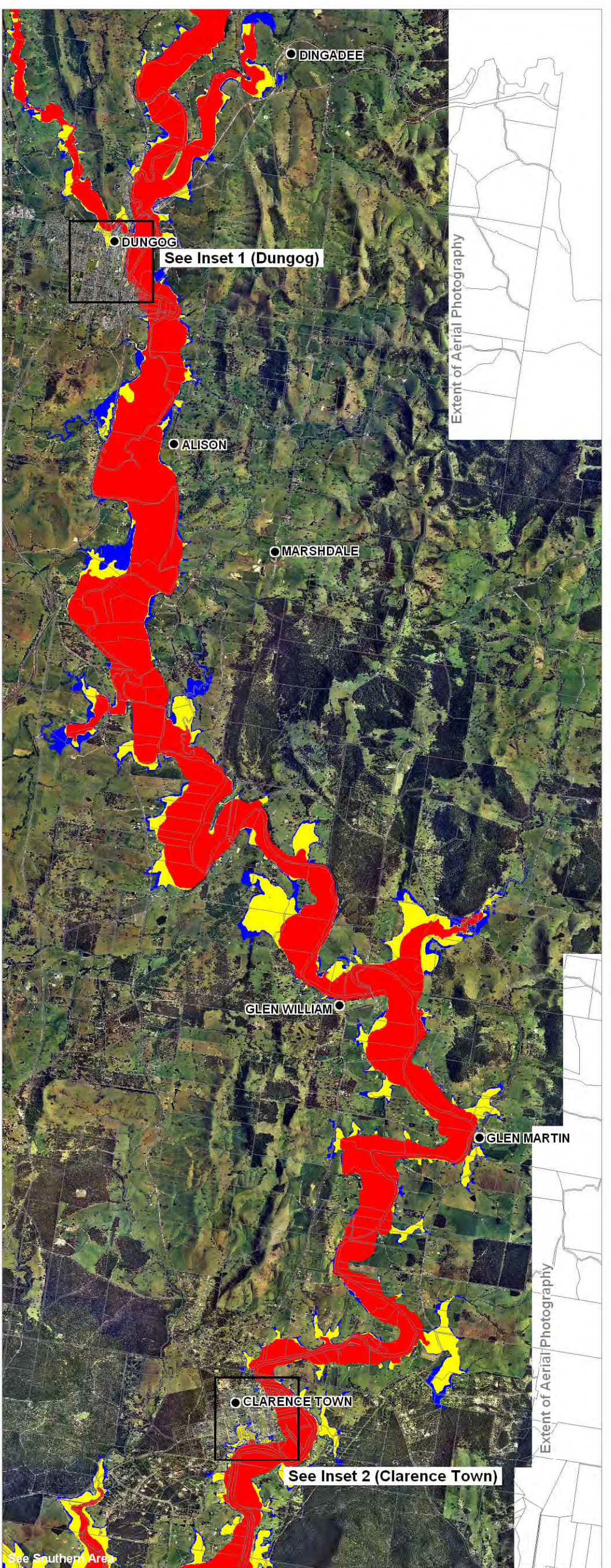
NOTE: Flood Model Simulations include future sea level rise

LEGEND

- Towns
- ▭ Cadastral Boundaries

Hydraulic Category

- Floodway
- Flood Storage
- Flood Fringe



Extent of Aerial Photography

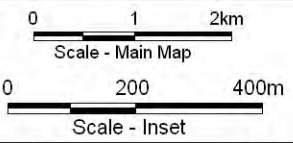
Extent of Aerial Photography

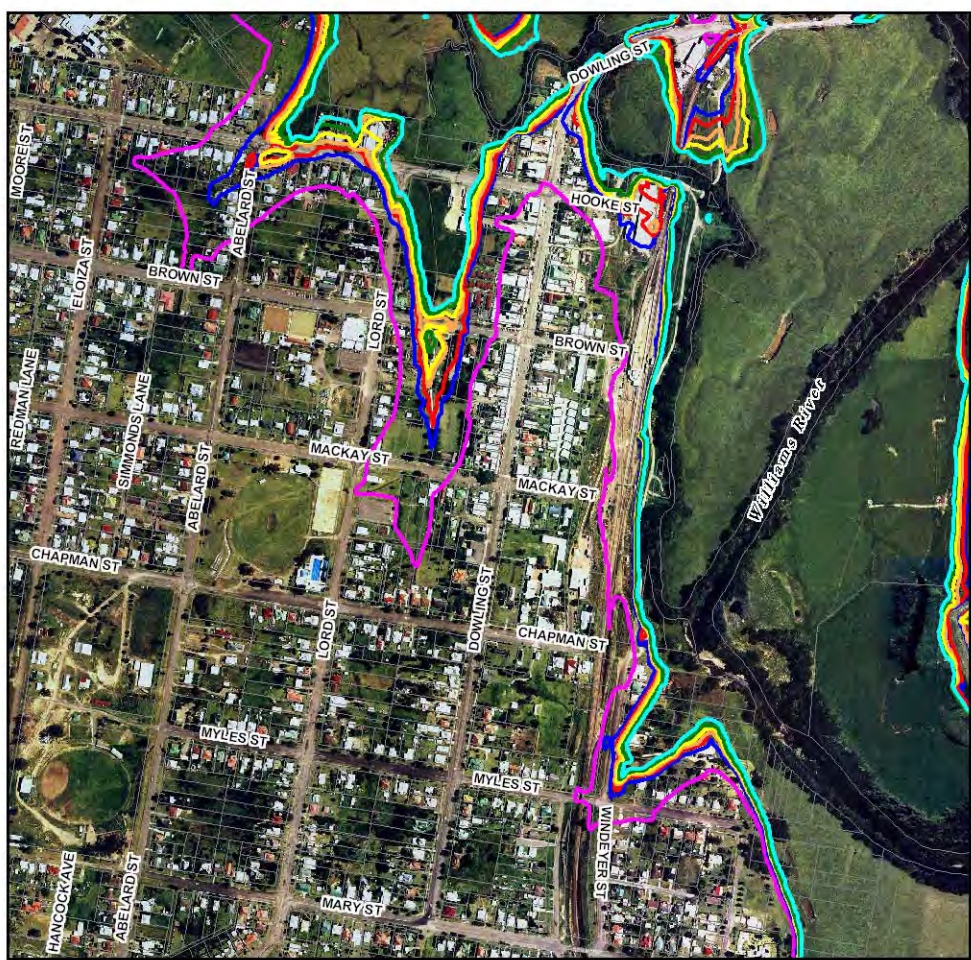
Title:
**Williams River 1% AEP Flood Event
 Northern Area - Provisional Hydraulic Category**

Figure:
Drawing 80

Rev:
A

BMT WBM endeavours to ensure that the information provided in this map is correct at the time of publication. BMT WBM does not warrant, guarantee or make representations regarding the currency and accuracy of information contained in this map.

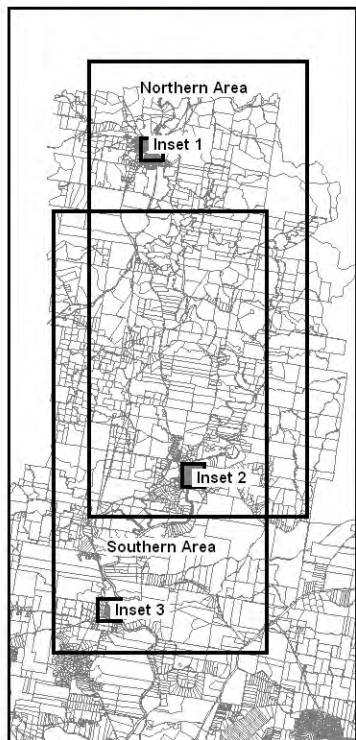




Inset 1 (Dungog)

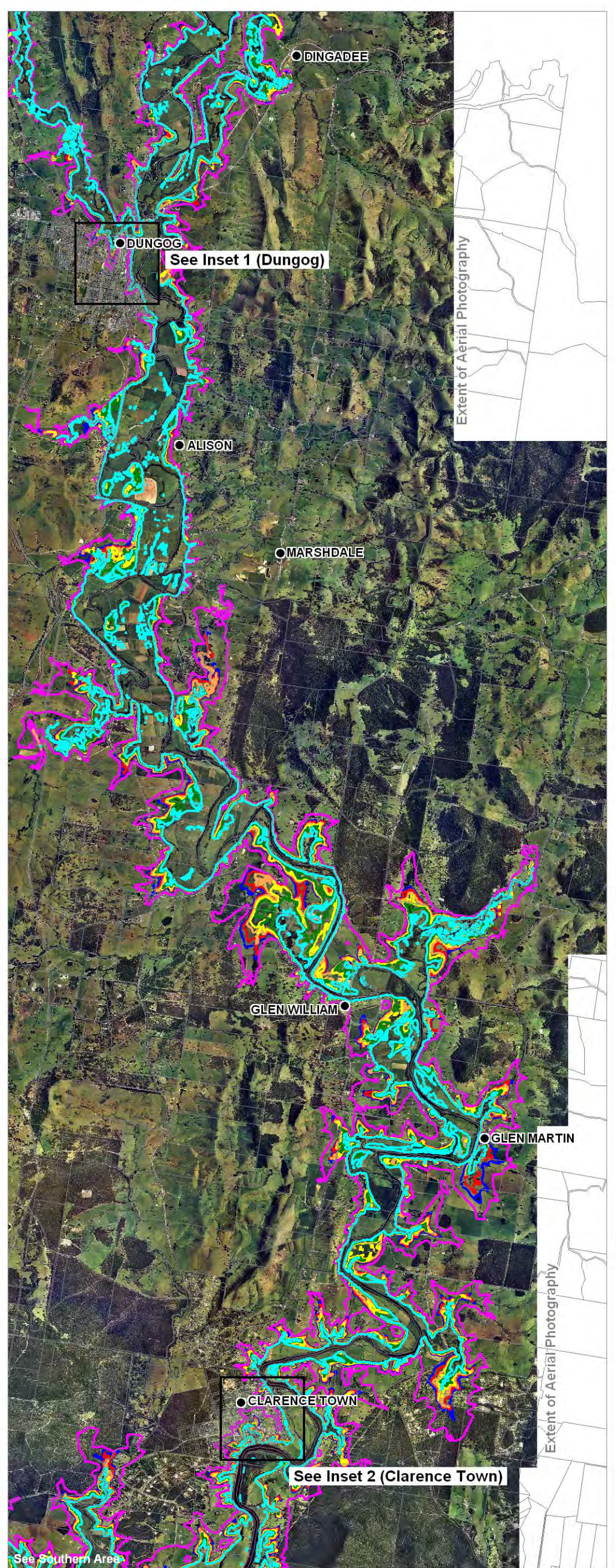


Inset 2 (Clarence Town)



NOTE: Flood Model Simulations include future sea level rise

LEGEND	
●	Towns
▭	Cadastral Boundaries
Flood Extent for Dungog Gauge Level (DWE Automatic Gauging Station)	
—	Gauge Level 8.69m
—	Gauge Level 9.13m
—	Gauge Level 9.65m
—	Gauge Level 10.13m
—	Gauge Level 10.66m
—	Gauge Level 11.18m
—	Gauge Level 15.41m

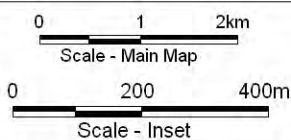


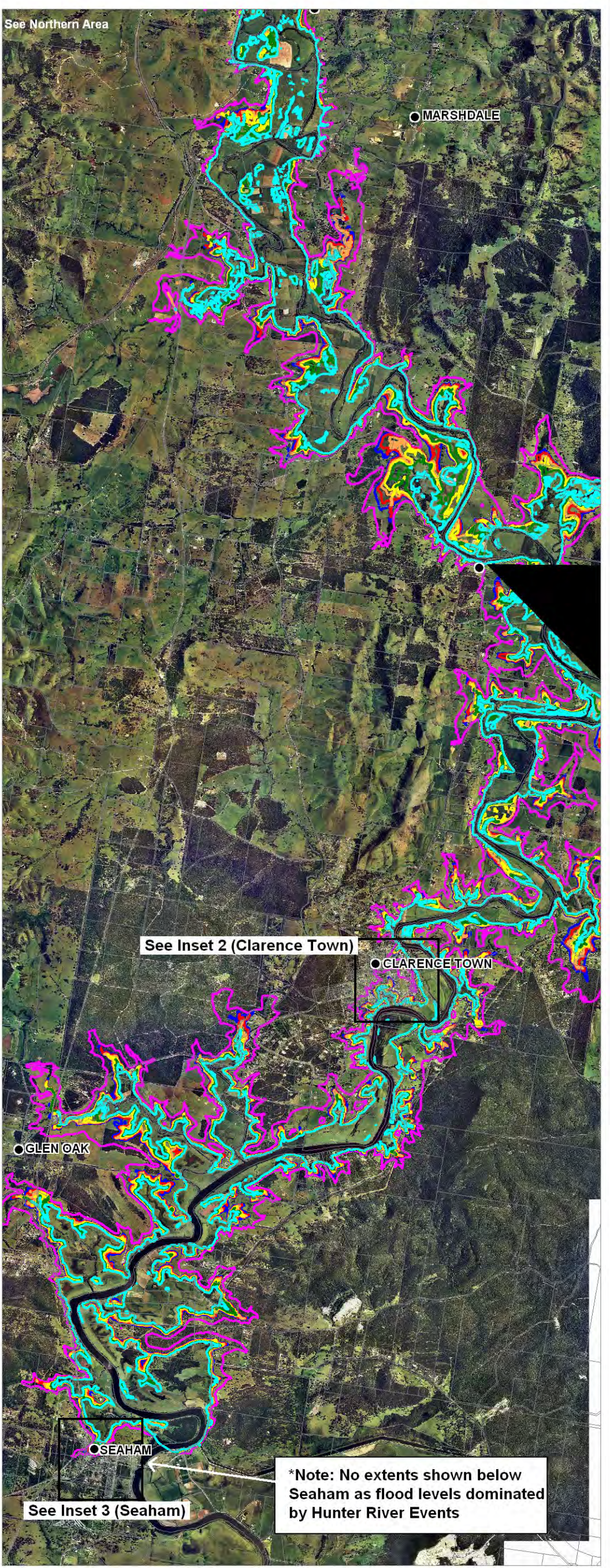
Title:
Flood Extents for Dungog Gauge Levels: Northern Area

Figure:
Drawing 82

Rev:
A

BMT WBM endeavours to ensure that the information provided in this map is correct at the time of publication. BMT WBM does not warrant, guarantee or make representations regarding the currency and accuracy of information contained in this map.





See Northern Area

MARSHDALE

See Inset 2 (Clarence Town)

CLARENCE TOWN

GLEN OAK

SEAHAM

See Inset 3 (Seaham)

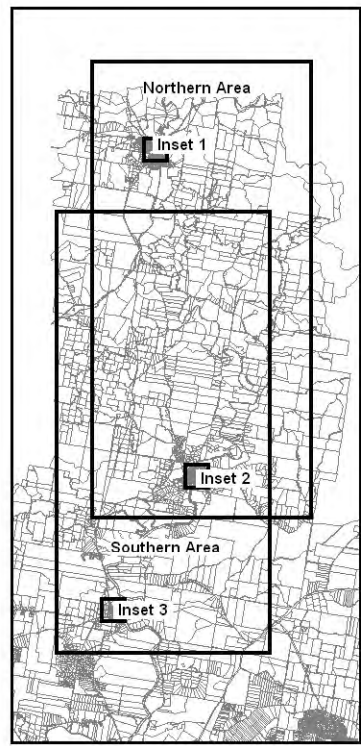
*Note: No extents shown below Seaham as flood levels dominated by Hunter River Events



Inset 2 (Clarence Town)



Inset 3 (Seaham)



NOTE: Flood Model Simulations include future sea level rise

LEGEND

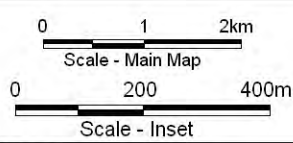
- Towns
- ▨ Cadastral Boundaries

Title: **Flood Extents for Glen Martin Gauge Levels: Southern Area**

Figure: **Drawing 83**

Rev: **A**

BMT WBM endeavours to ensure that the information provided in this map is correct at the time of publication. BMT WBM does not warrant, guarantee or make representations regarding the currency and accuracy of information contained in this map.





BMT WBM Brisbane
Level 11, 490 Upper Edward Street Brisbane 4000
PO Box 203 Spring Hill QLD 4004
Tel +61 7 3831 6744 Fax +61 7 3832 3627
Email wbm@wbmpl.com.au
Web www.wbmpl.com.au

BMT WBM Denver
14 Inverness Drive East, #B132
Englewood Denver Colorado 80112 USA
Tel +1 303 792 9814 Fax +1 303 792 9742
Email wbm-denver@wbmpl.com.au
Web www.wbmpl.com.au

BMT WBM Melbourne
Level 5, 99 King Street Melbourne 3000
PO Box 604 Collins Street West VIC 8007
Tel +61 3 8620 6100 Fax +61 3 8620 6105
Email wbm-melbourne@wbmpl.com.au
Web www.wbmpl.com.au

BMT WBM Morwell
Cnr Hazelwood Drive & Miners Way Morwell 3840
PO Box 888 Morwell VIC 3840
Tel +61 3 5135 3400 Fax +61 3 5135 3444
Email wbm-morwell@wbmpl.com.au
Web www.wbmpl.com.au

BMT WBM Newcastle
126 Belford Street Broadmeadow 2292
PO Box 266 Broadmeadow NSW 2292
Tel +61 2 4940 8882 Fax +61 2 4940 8887
Email wbm-newcastle@wbmpl.com.au
Web www.wbmpl.com.au

BMT WBM Perth
1 Brodie Hall Drive Technology Park Bentley 6102
Tel +61 8 9328 2029 Fax +61 8 9486 7588
Email wbm-perth@wbmpl.com.au
Web www.wbmpl.com.au

BMT WBM Sydney
Suite 206, 118 Great North Road Five Dock 2046
PO Box 129 Five Dock NSW 2046
Tel +61 2 9713 4836 Fax +61 2 9713 4890
Email wbm-sydney@wbmpl.com.au
Web www.wbmpl.com.au

BMT WBM Vancouver
1190 Melville Street #700 Vancouver
British Columbia V6E 3W1 Canada
Tel +1 604 683 5777 Fax +1 604 608 3232
Email wbm-vancouver@wbmpl.com.au
Web www.wbmpl.com.au