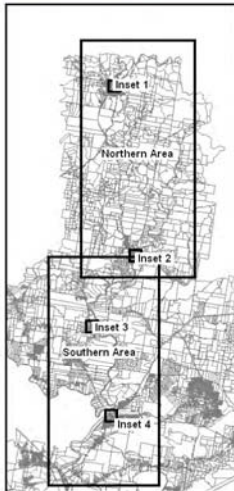


Inset 1 (Dungog)



Inset 2 (Clarence Town)



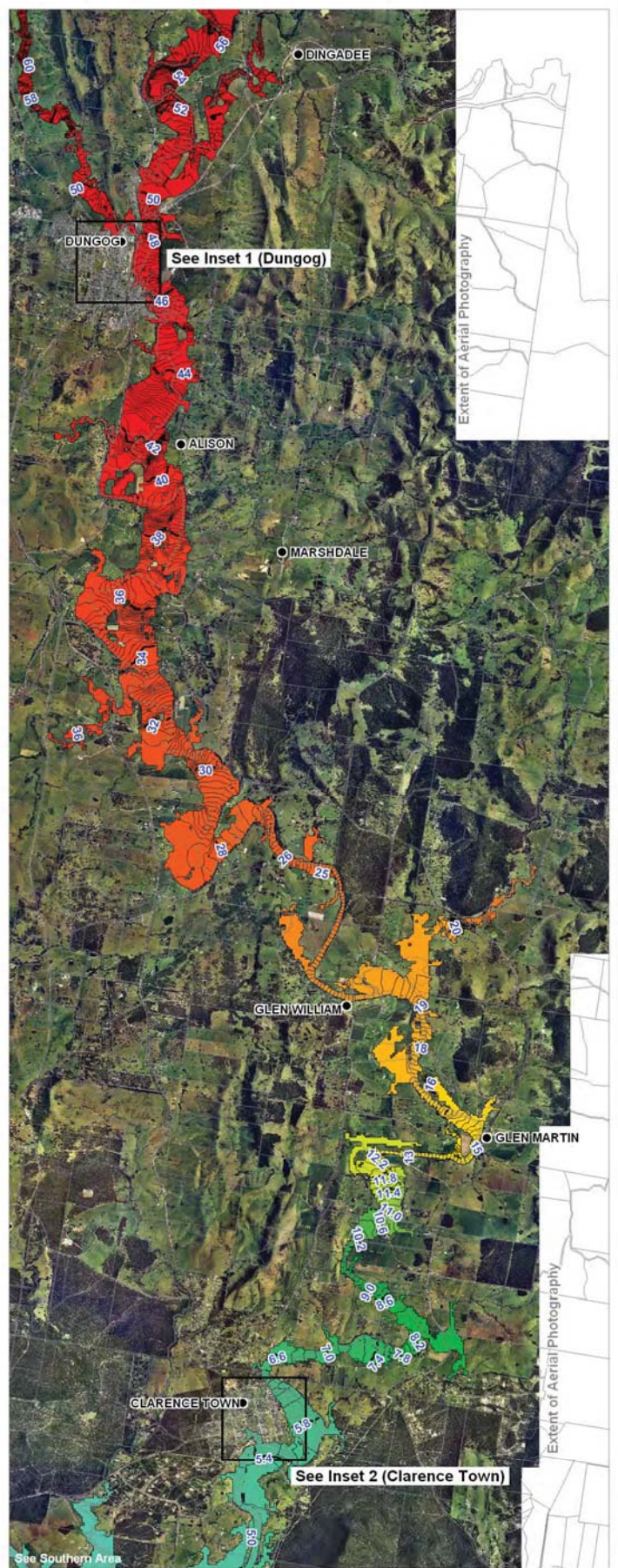
NOTE: Flood Model Simulations include future sea level rise

LEGEND

- Towns
- ▭ Cadastral Boundaries

Modelled Water Level (mAHD)

| | | | | |
|------------|--------------|--------------|--------------|--------------|
| 1.0 to 1.2 | 4.4 to 4.6 | 10.6 to 11.0 | 24.0 to 25.0 | 56.0 to 58.0 |
| 1.2 to 1.4 | 4.6 to 4.8 | 11.0 to 11.4 | 25.0 to 26.0 | 58.0 to 60.0 |
| 1.4 to 1.6 | 4.8 to 5.0 | 11.4 to 11.8 | 26.0 to 28.0 | 60.0 to 62.0 |
| 1.6 to 1.8 | 5.0 to 5.4 | 11.8 to 12.2 | 28.0 to 30.0 | 62.0 to 64.0 |
| 1.8 to 2.0 | 5.4 to 5.8 | 12.2 to 12.6 | 30.0 to 32.0 | 64.0 to 66.0 |
| 2.0 to 2.2 | 5.8 to 6.2 | 12.6 to 13.0 | 32.0 to 34.0 | 66.0 to 68.0 |
| 2.2 to 2.4 | 6.2 to 6.6 | 13.0 to 14.0 | 34.0 to 36.0 | 68.0 to 70.0 |
| 2.4 to 2.6 | 6.6 to 7.0 | 14.0 to 15.0 | 36.0 to 38.0 | 70.0 to 72.0 |
| 2.6 to 2.8 | 7.0 to 7.4 | 15.0 to 16.0 | 38.0 to 40.0 | 72.0 to 74.0 |
| 2.8 to 3.0 | 7.4 to 7.8 | 16.0 to 17.0 | 40.0 to 42.0 | 74.0 to 76.0 |
| 3.0 to 3.2 | 7.8 to 8.2 | 17.0 to 18.0 | 42.0 to 44.0 | 76.0 to 78.0 |
| 3.2 to 3.4 | 8.2 to 8.6 | 18.0 to 19.0 | 44.0 to 46.0 | 78.0 to 80.0 |
| 3.4 to 3.6 | 8.6 to 9.0 | 19.0 to 20.0 | 46.0 to 48.0 | 80.0 to 82.0 |
| 3.6 to 3.8 | 9.0 to 9.4 | 20.0 to 21.0 | 48.0 to 50.0 | 82.0 to 84.0 |
| 3.8 to 4.0 | 9.4 to 9.8 | 21.0 to 22.0 | 50.0 to 52.0 | 84.0 to 86.0 |
| 4.0 to 4.2 | 9.8 to 10.2 | 22.0 to 23.0 | 52.0 to 54.0 | |
| 4.2 to 4.4 | 10.2 to 10.6 | 23.0 to 24.0 | 54.0 to 56.0 | |



Extent of Aerial Photography

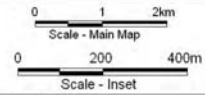
Extent of Aerial Photography

Title:
Williams River 20% AEP Flood Event
Northern Area - Peak Water Level

Figure:
Drawing 52

Rev:
A

BMT WBM endeavours to ensure that the information provided in this map is correct at the time of publication. BMT WBM does not warrant, guarantee or make representations regarding the currency and accuracy of information contained in this map.

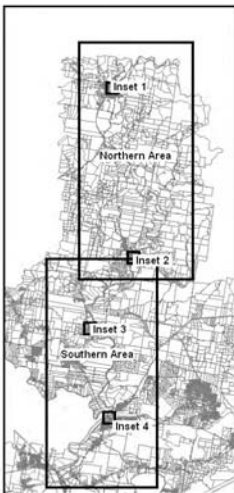
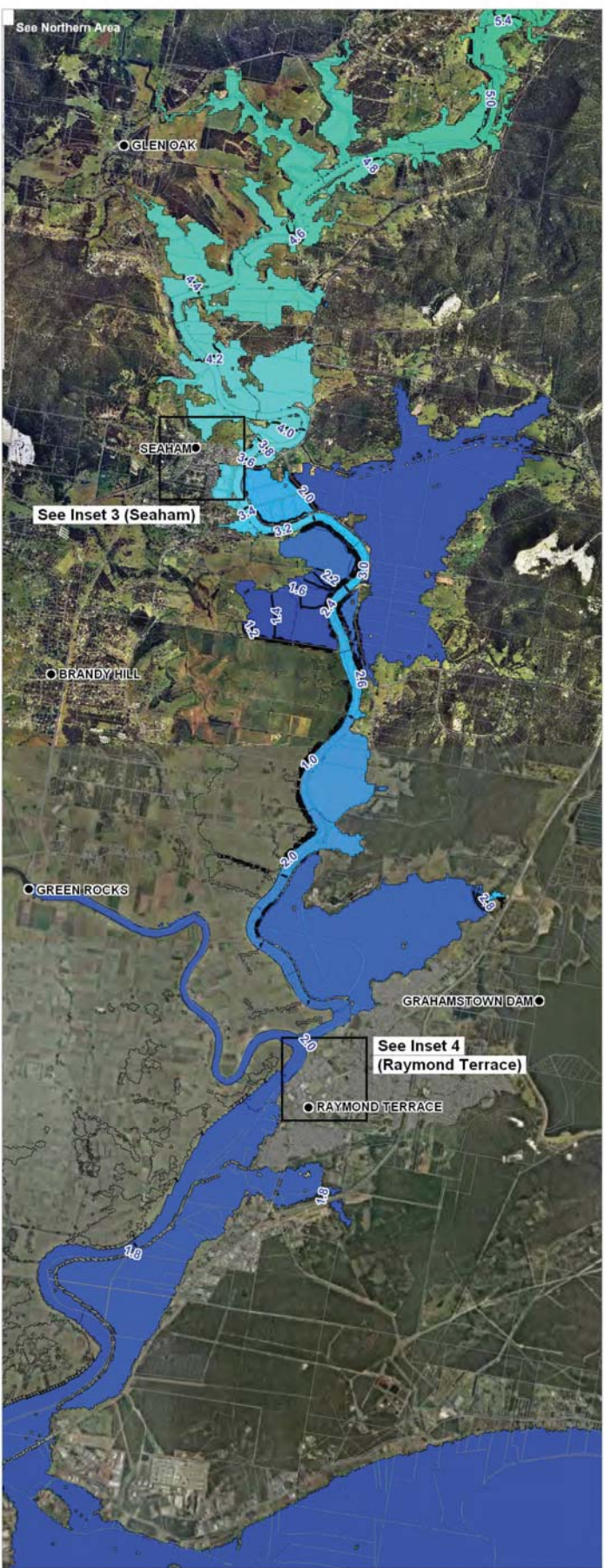




Inset 3 (Seaham)



Inset 4 (Raymond Terrace)



NOTE: Flood Model Simulations include future sea level rise

LEGEND

- Towns
- ▬ Cadastral Boundaries

Modelled Water Level (mAHD)

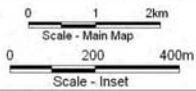
| | | | | |
|------------|--------------|--------------|--------------|--------------|
| 1.0 to 1.2 | 4.4 to 4.6 | 10.6 to 11.0 | 24.0 to 25.0 | 56.0 to 58.0 |
| 1.2 to 1.4 | 4.6 to 4.8 | 11.0 to 11.4 | 25.0 to 26.0 | 58.0 to 60.0 |
| 1.4 to 1.6 | 4.8 to 5.0 | 11.4 to 11.8 | 26.0 to 28.0 | 60.0 to 62.0 |
| 1.6 to 1.8 | 5.0 to 5.4 | 11.8 to 12.2 | 28.0 to 30.0 | 62.0 to 64.0 |
| 1.8 to 2.0 | 5.4 to 5.8 | 12.2 to 12.6 | 30.0 to 32.0 | 64.0 to 66.0 |
| 2.0 to 2.2 | 5.8 to 6.2 | 12.6 to 13.0 | 32.0 to 34.0 | 66.0 to 68.0 |
| 2.2 to 2.4 | 6.2 to 6.6 | 13.0 to 14.0 | 34.0 to 36.0 | 68.0 to 70.0 |
| 2.4 to 2.6 | 6.6 to 7.0 | 14.0 to 15.0 | 36.0 to 38.0 | 70.0 to 72.0 |
| 2.6 to 2.8 | 7.0 to 7.4 | 15.0 to 16.0 | 38.0 to 40.0 | 72.0 to 74.0 |
| 2.8 to 3.0 | 7.4 to 7.8 | 16.0 to 17.0 | 40.0 to 42.0 | 74.0 to 76.0 |
| 3.0 to 3.2 | 7.8 to 8.2 | 17.0 to 18.0 | 42.0 to 44.0 | 76.0 to 78.0 |
| 3.2 to 3.4 | 8.2 to 8.6 | 18.0 to 19.0 | 44.0 to 46.0 | 78.0 to 80.0 |
| 3.4 to 3.6 | 8.6 to 9.0 | 19.0 to 20.0 | 46.0 to 48.0 | 80.0 to 82.0 |
| 3.6 to 3.8 | 9.0 to 9.4 | 20.0 to 21.0 | 48.0 to 50.0 | 82.0 to 84.0 |
| 3.8 to 4.0 | 9.4 to 9.8 | 21.0 to 22.0 | 50.0 to 52.0 | 84.0 to 86.0 |
| 4.0 to 4.2 | 9.8 to 10.2 | 22.0 to 23.0 | 52.0 to 54.0 | |
| 4.2 to 4.4 | 10.2 to 10.6 | 23.0 to 24.0 | 54.0 to 56.0 | |

Title:
Williams River 20% AEP Flood Event
Southern Area - Peak Water Level

Figure:
Drawing 53

Rev:
A

BMT WBM endeavours to ensure that the information provided in this map is correct at the time of publication. BMT WBM does not warrant, guarantee or make representations regarding the currency and accuracy of information contained in this map.





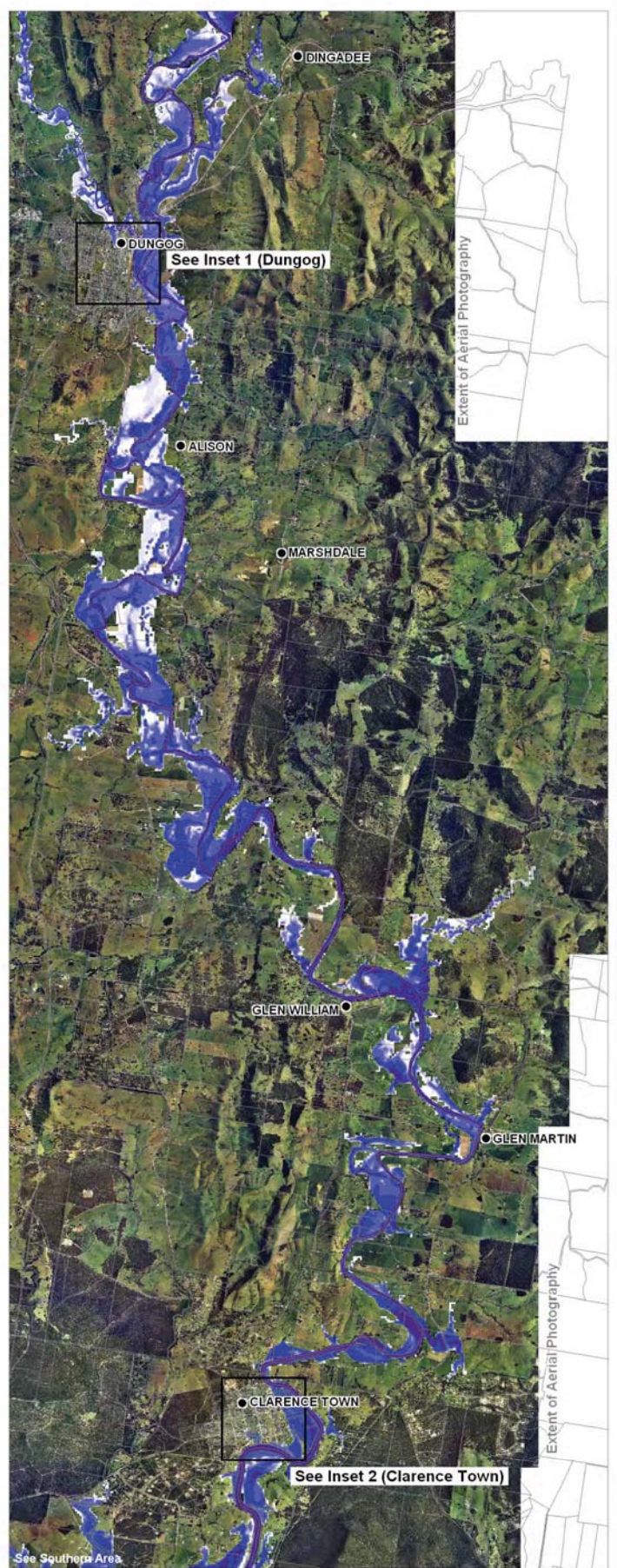
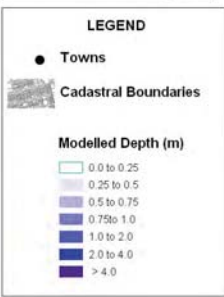
Inset 1 (Dungog)



Inset 2 (Clarence Town)



NOTE: Flood Model Simulations include future sea level rise

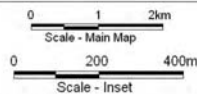


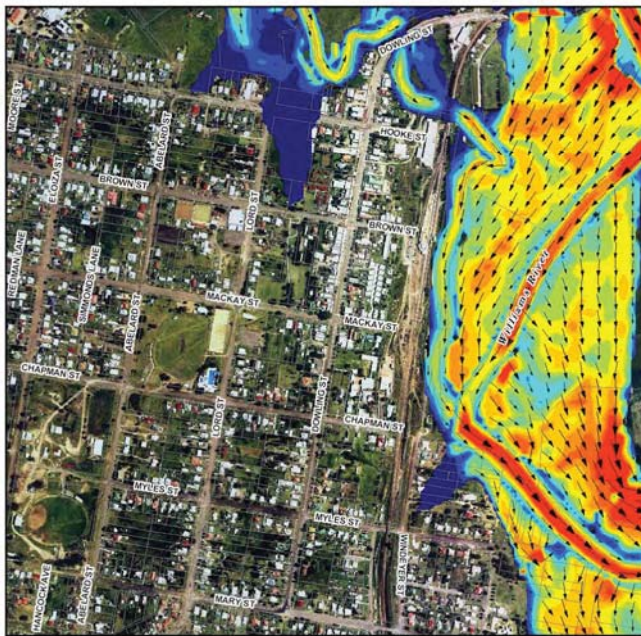
Title:
Williams River 20% AEP Flood Event
Northern Area - Peak Depths

Figure:
Drawing 54

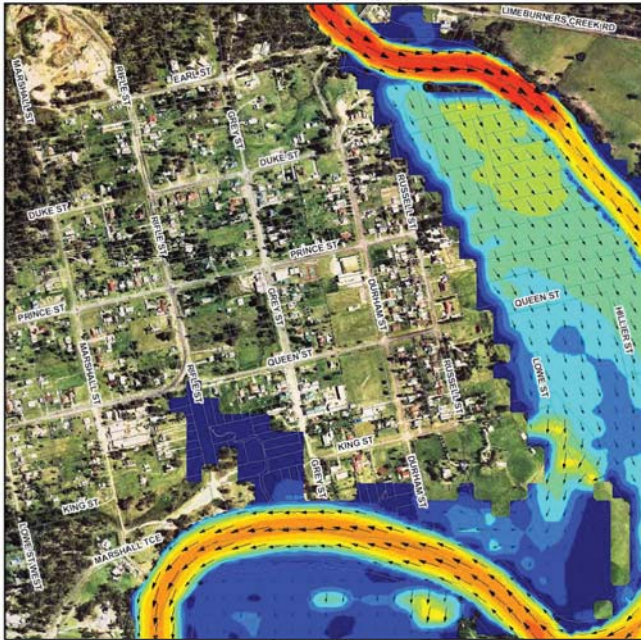
Rev:
A

BMT WBM endeavours to ensure that the information in this map is correct at the time of publication. BMT WBM does not warrant, guarantee or make representations regarding the currency and accuracy of information contained in this map.





Inset 1 (Dungog)

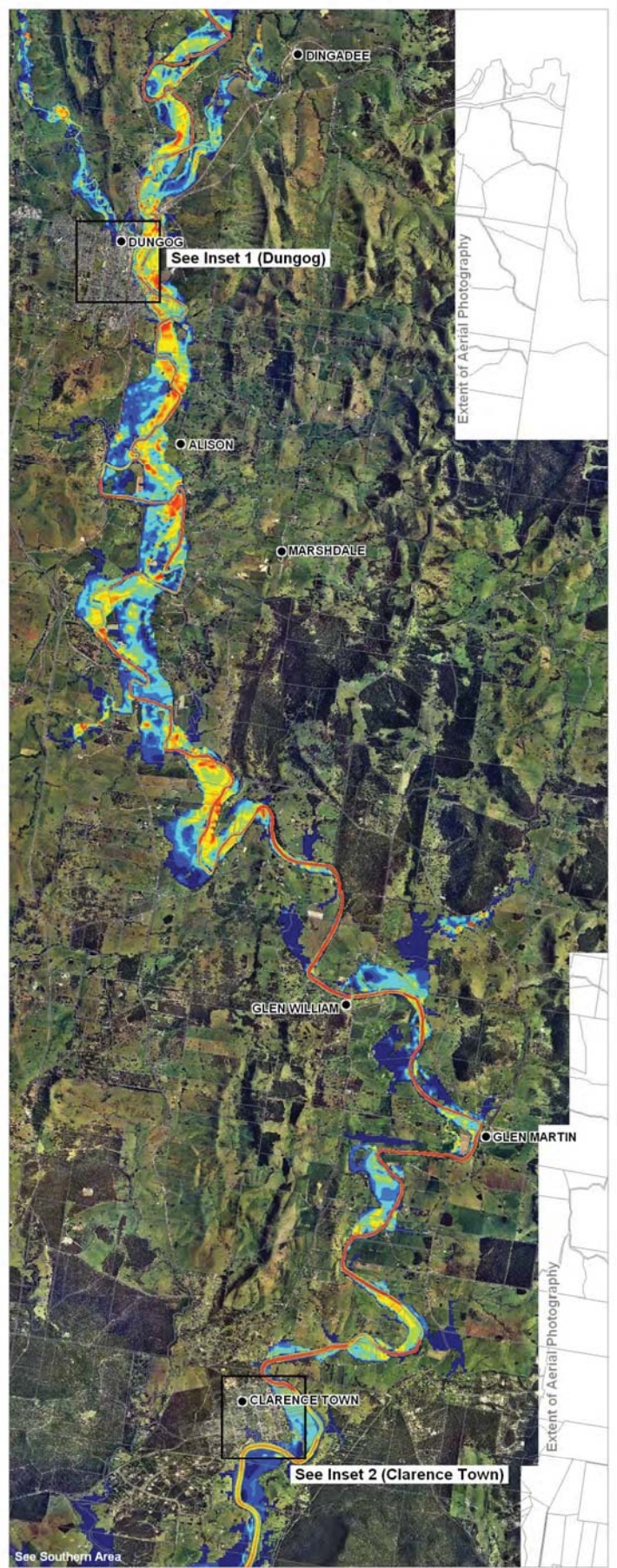


Inset 2 (Clarence Town)



NOTE: Flood Model Simulations include future sea level rise

| LEGEND | |
|---------------------------------------|----------------------|
| ● | Towns |
| ▭ | Cadastral Boundaries |
| Modelled Velocity at Peak Depth (m/s) | |
| Blue | 0.0 to 0.2 |
| Light Blue | 0.2 to 0.4 |
| Green | 0.4 to 0.6 |
| Yellow | 0.6 to 0.8 |
| Light Green | 0.8 to 1.0 |
| Yellow-Green | 1.0 to 1.2 |
| Yellow | 1.2 to 1.4 |
| Orange | 1.4 to 1.6 |
| Red-Orange | 1.6 to 1.8 |
| Red | 1.8 to 2.0 |
| Dark Red | 2.0 to 3.5 |
| Black | 3.5 to 5.0 |
| Black | > 5.0 |



Extent of Aerial Photography

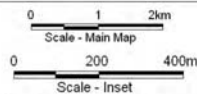
Extent of Aerial Photography

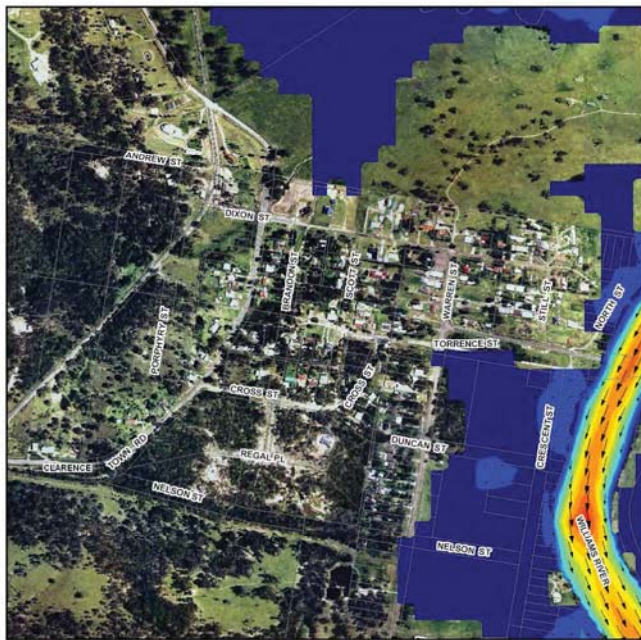
Title:
Williams River 20% AEP Flood Event
Northern Area - Peak Velocities

Figure:
Drawing 56

Rev:
A

BMT WBM endeavours to ensure that the information provided in this map is correct at the time of publication. BMT WBM does not warrant, guarantee or make representations regarding the currency and accuracy of information contained in this map.

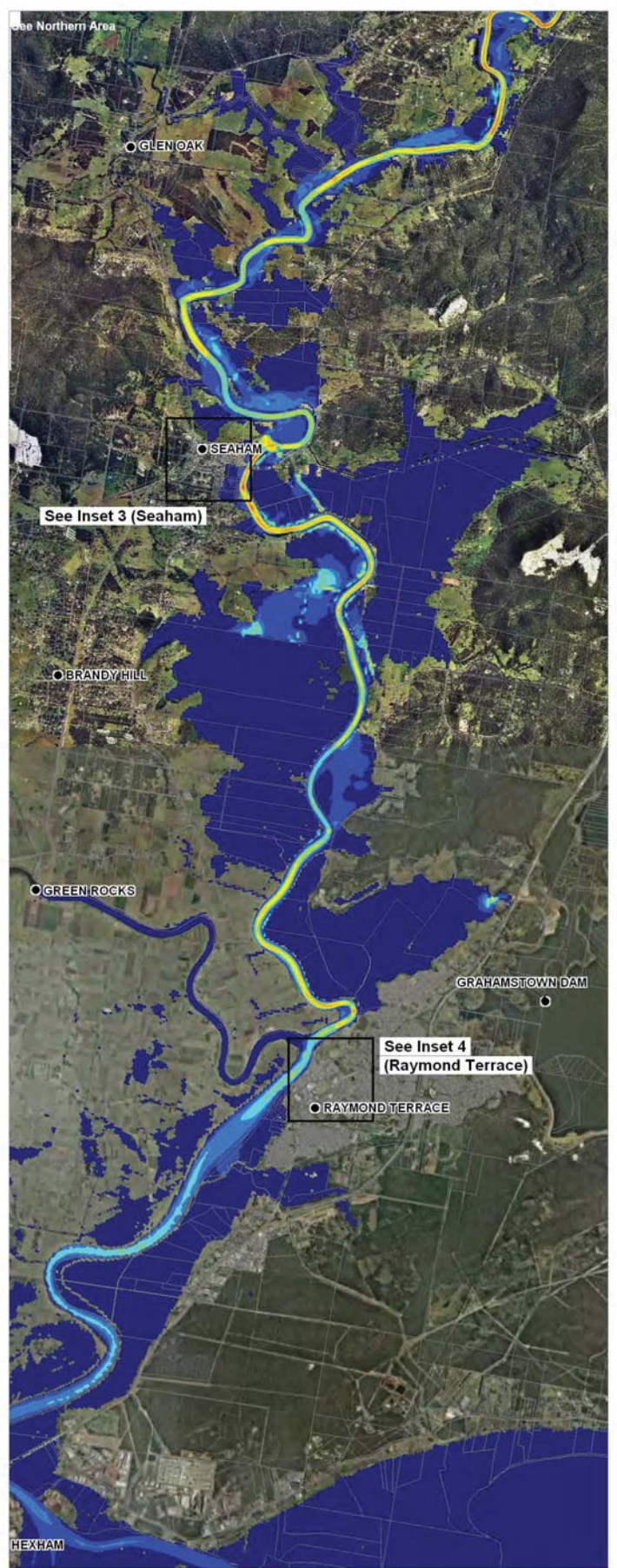




Inset 3 (Seaham)



Inset 4 (Raymond Terrace)



NOTE: Flood Model Simulations include future sea level rise

LEGEND

- Towns
- ▭ Cadastral Boundaries

Modelled Velocity at Peak Depth (m/s)

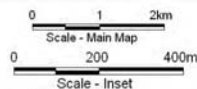
| | |
|------------|------------|
| 0.0 to 0.2 | 1.4 to 1.6 |
| 0.2 to 0.4 | 1.6 to 1.8 |
| 0.4 to 0.6 | 1.8 to 2.0 |
| 0.6 to 0.8 | 2.0 to 3.5 |
| 0.8 to 1.0 | 3.5 to 5.0 |
| 1.0 to 1.2 | > 5.0 |
| 1.2 to 1.4 | |

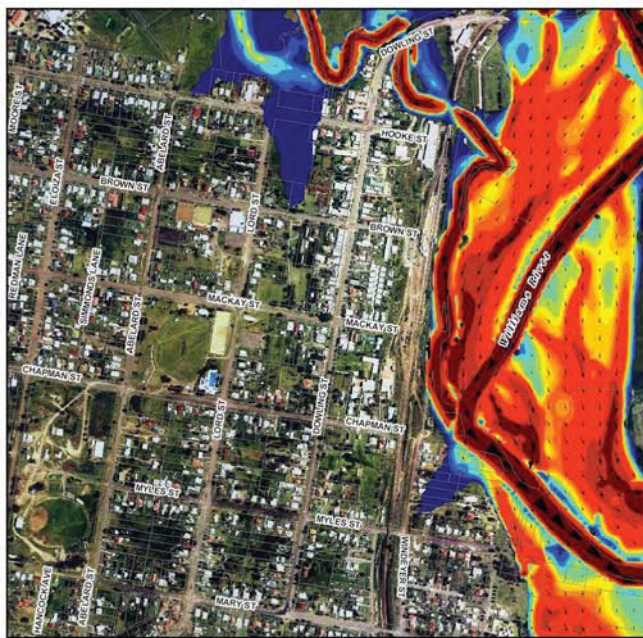
Title:
Williams River 20% AEP Flood Event
Southern Area - Peak Velocities

Figure:
Drawing 57

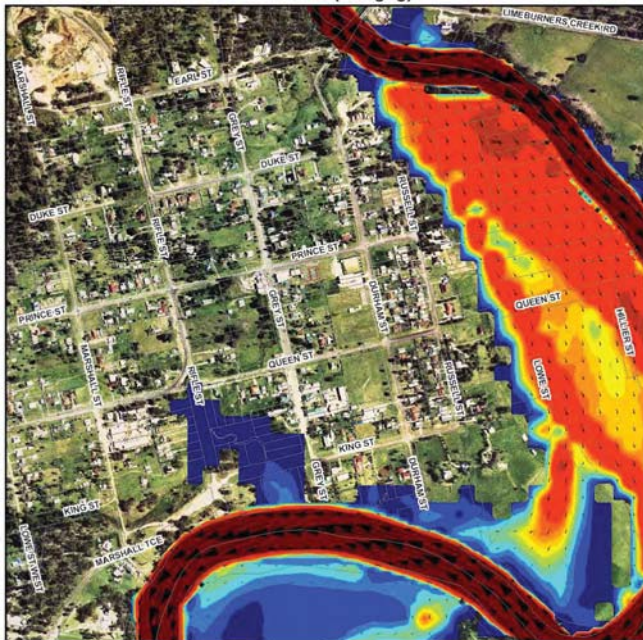
Rev.:
A

BMT WBM endeavours to ensure that the information provided in this map is correct at the time of publication. BMT WBM does not warrant, guarantee or make representations regarding the currency and accuracy of information contained in this map.





Inset 1 (Dungog)



Inset 2 (Clarence Town)



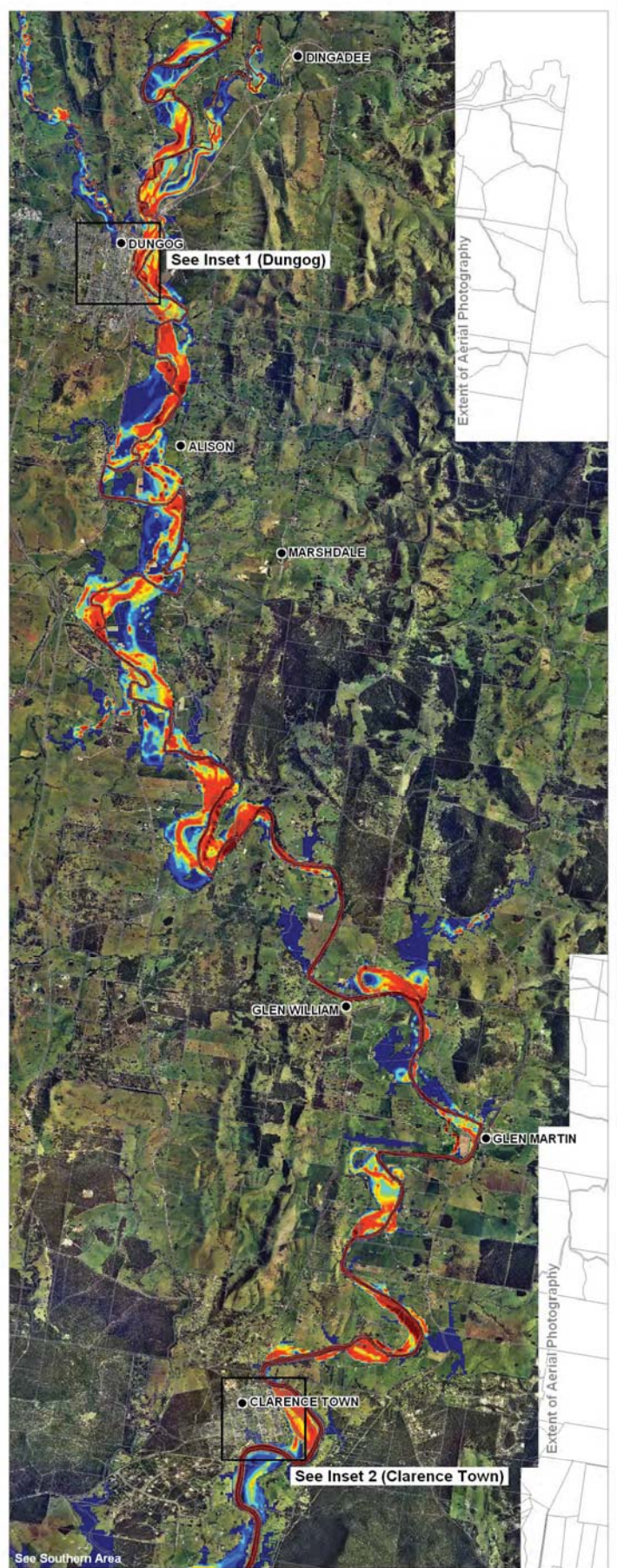
NOTE: Flood Model Simulations include future sea level rise

LEGEND

- Towns
- ▭ Cadastral Boundaries

Modelled Velocity-Depth Product (m/s²)

| | |
|------------|------------|
| 0.0 to 0.2 | 1.4 to 1.6 |
| 0.2 to 0.4 | 1.6 to 1.8 |
| 0.4 to 0.6 | 1.8 to 2.0 |
| 0.6 to 0.8 | 2.0 to 3.5 |
| 0.8 to 1.0 | 3.5 to 5.0 |
| 1.0 to 1.2 | > 5.0 |
| 1.2 to 1.4 | |



Extent of Aerial Photography

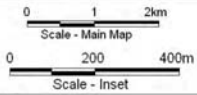
Extent of Aerial Photography

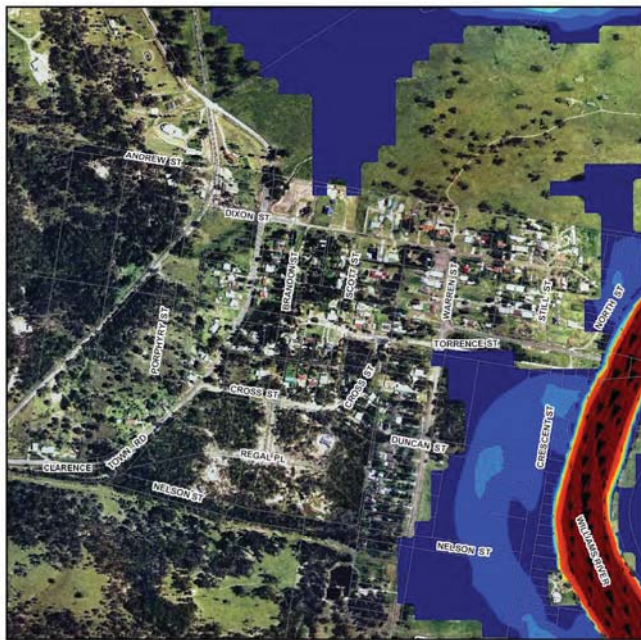
Title:
Williams River 20% AEP Flood Event
Northern Area - Velocity-Depth Product

Figure:
Drawing 58

Rev:
A

BMT WBM endeavours to ensure that the information provided in this map is correct at the time of publication. BMT WBM does not warrant, guarantee or make representations regarding the currency and accuracy of information contained in this map.

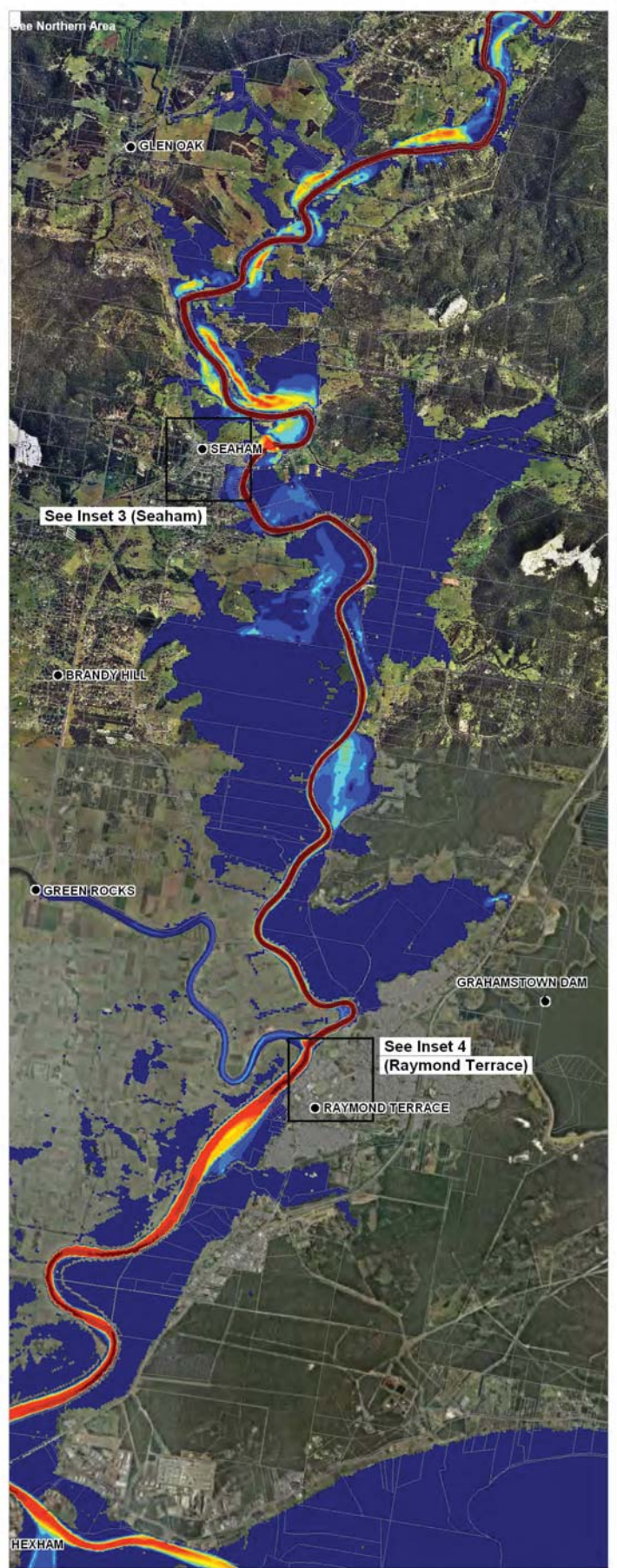




Inset 3 (Seaham)



Inset 4 (Raymond Terrace)



NOTE: Flood Model Simulations include future sea level rise

LEGEND

- Towns
- ▭ Cadastral Boundaries

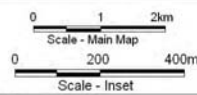
Modelled Velocity-Depth Product (m/s²)

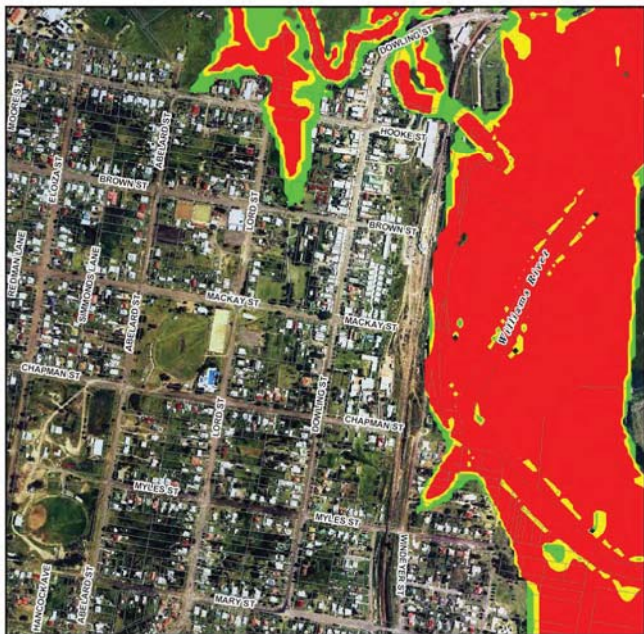
| | |
|------------|------------|
| 0.0 to 0.2 | 1.4 to 1.6 |
| 0.2 to 0.4 | 1.6 to 1.8 |
| 0.4 to 0.6 | 1.8 to 2.0 |
| 0.6 to 0.8 | 2.0 to 3.5 |
| 0.8 to 1.0 | 3.5 to 5.0 |
| 1.0 to 1.2 | > 5.0 |
| 1.2 to 1.4 | |

Title:
Williams River 20% AEP Flood Event
Southern Area - Velocity-Depth Product

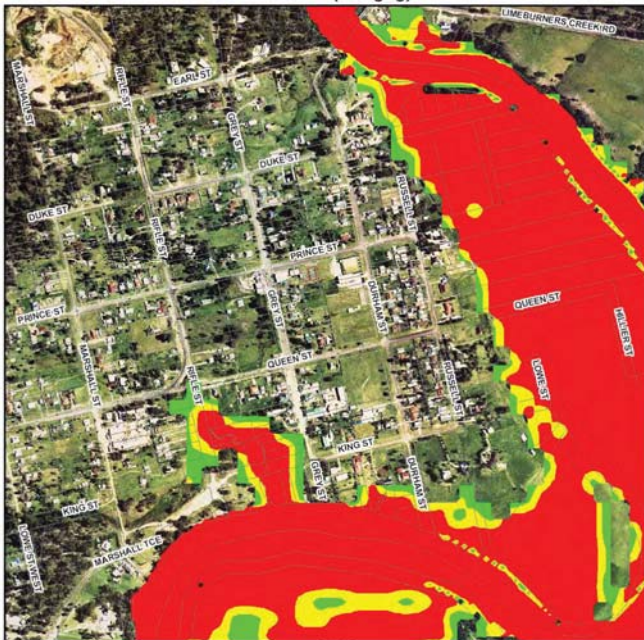
Figure: Drawing 59
Rev: A

BMT WBM endeavours to ensure that the information provided in this map is correct at the time of publication. BMT WBM does not warrant, guarantee or make representations regarding the currency and accuracy of information contained in this map.

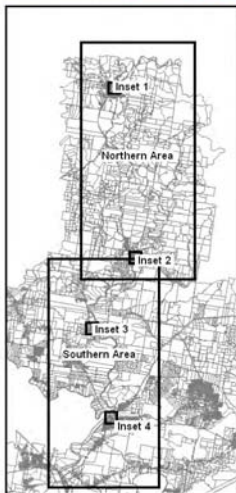




Inset 1 (Dungog)



Inset 2 (Clarence Town)



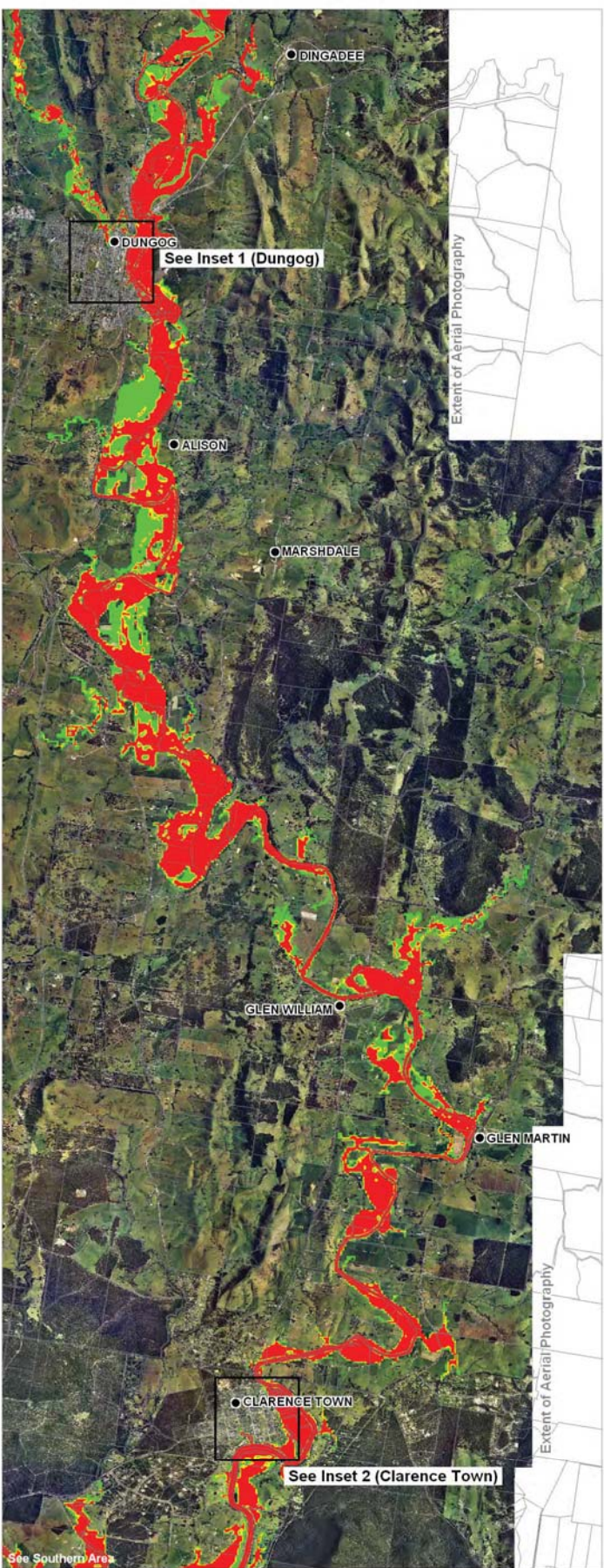
NOTE: Flood Model Simulations include future sea level rise

LEGEND

- Towns
- ▭ Cadastral Boundaries

Provisional Flood Hazard Category

- High Hazard
- Intermediate Hazard
- Low Hazard

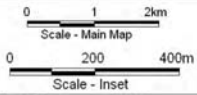


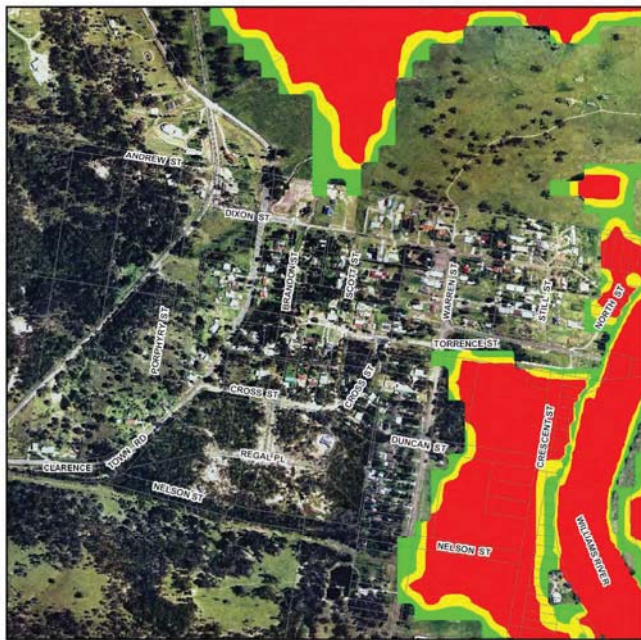
Title:
**Williams River 20% AEP Flood Event
Northern Area - Provisional Hazard**

Figure:
Drawing 60

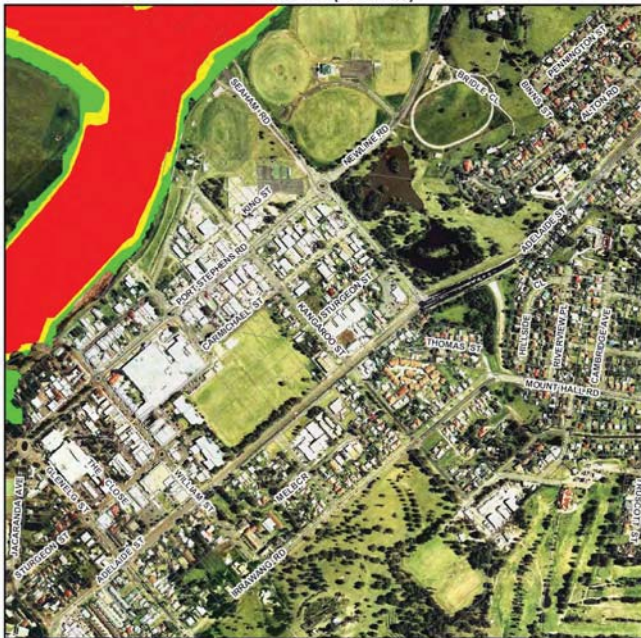
Rev:
A

BMT WBM endeavours to ensure that the information provided in this map is correct at the time of publication. BMT WBM does not warrant, guarantee or make representations regarding the currency and accuracy of information contained in this map.

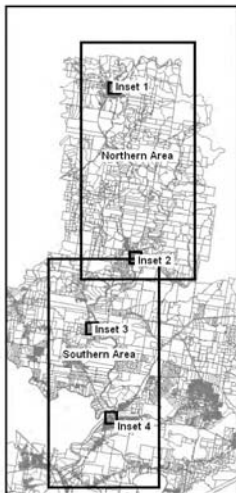




Inset 3 (Seaham)



Inset 4 (Raymond Terrace)



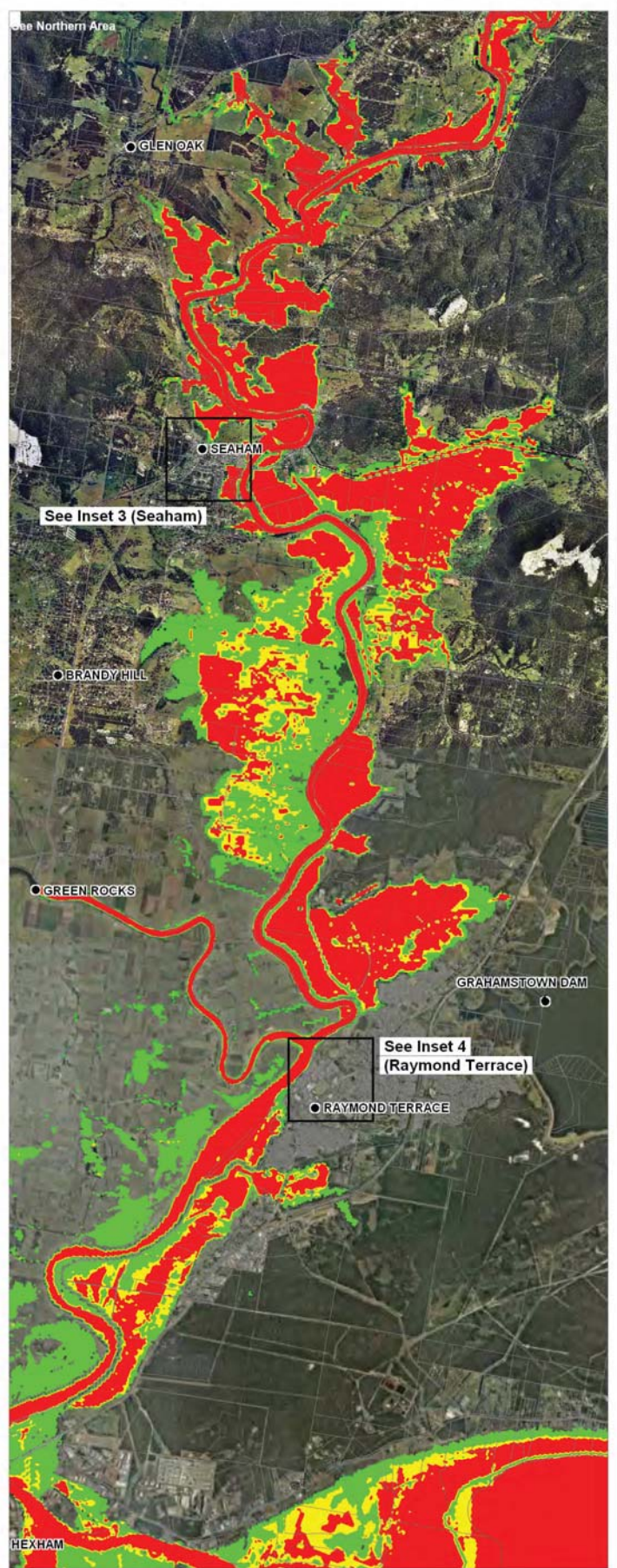
NOTE: Flood Model Simulations include future sea level rise

LEGEND

- Towns
- ▭ Cadastral Boundaries

Provisional Flood Hazard Category

- Red: High Hazard
- Yellow: Intermediate Hazard
- Green: Low Hazard

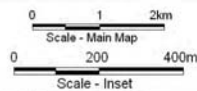


Title:
**Williams River 20% AEP Flood Event
Southern Area - Provisional Hazard**

Figure:
Drawing 61

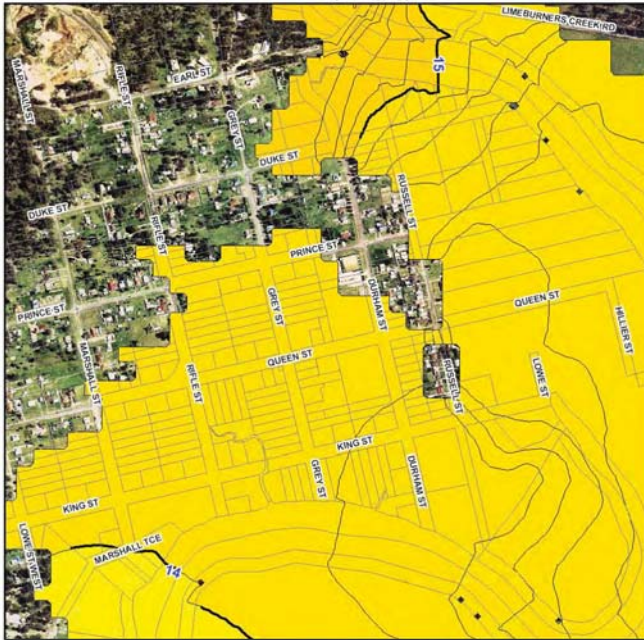
Rev.
A

BMT WBM endeavours to ensure that the information provided in this map is correct at the time of publication. BMT WBM does not warrant, guarantee or make representations regarding the currency and accuracy of information contained in this map.

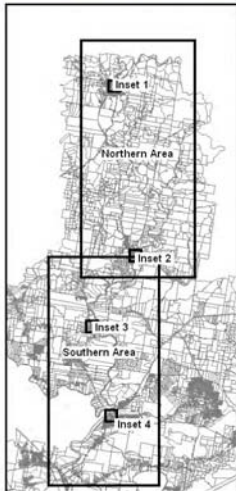




Inset 1 (Dungog)



Inset 2 (Clarence Town)



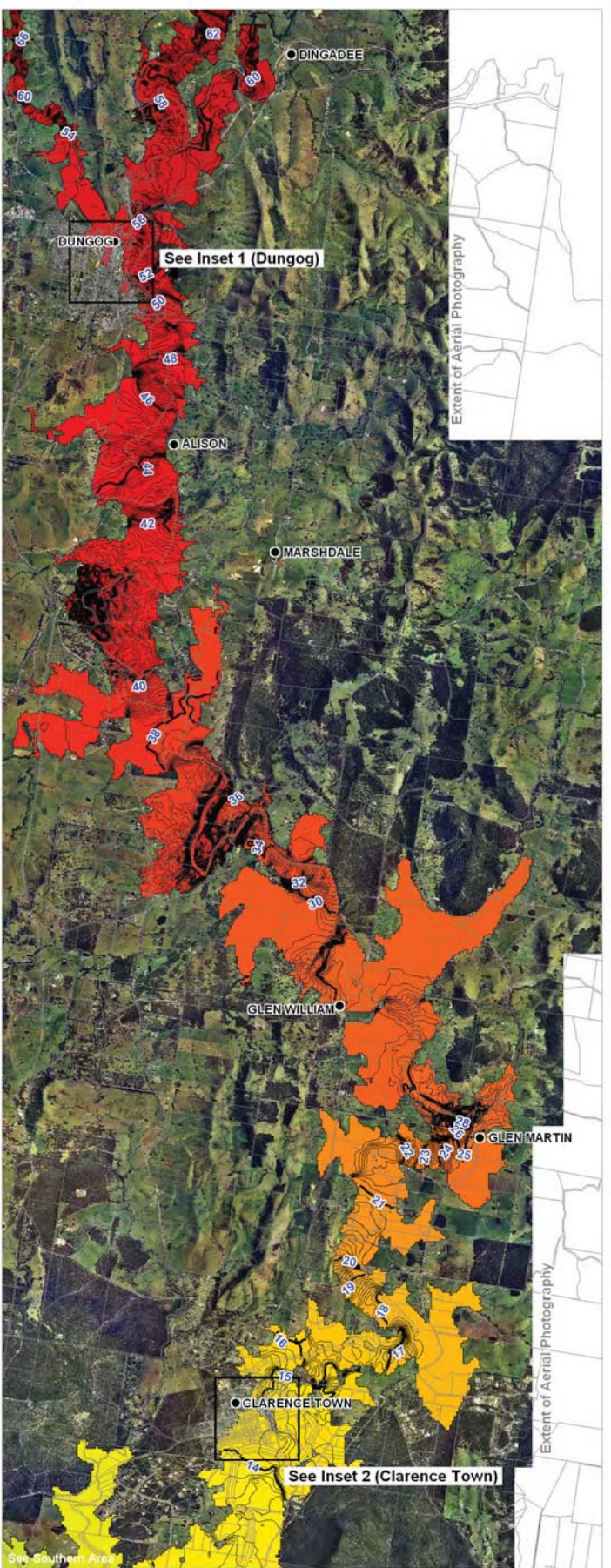
NOTE: Flood Model Simulations include future sea level rise

LEGEND

- Towns
- ▭ Cadastral Boundaries

Modelled Water Level (mAHD)

| | | | | |
|------------|--------------|--------------|--------------|--------------|
| 1.0 to 1.2 | 4.4 to 4.6 | 10.6 to 11.0 | 24.0 to 25.0 | 56.0 to 58.0 |
| 1.2 to 1.4 | 4.6 to 4.8 | 11.0 to 11.4 | 25.0 to 26.0 | 58.0 to 60.0 |
| 1.4 to 1.6 | 4.8 to 5.0 | 11.4 to 11.8 | 26.0 to 28.0 | 60.0 to 62.0 |
| 1.6 to 1.8 | 5.0 to 5.4 | 11.8 to 12.2 | 28.0 to 30.0 | 62.0 to 64.0 |
| 1.8 to 2.0 | 5.4 to 5.8 | 12.2 to 12.6 | 30.0 to 32.0 | 64.0 to 66.0 |
| 2.0 to 2.2 | 5.8 to 6.2 | 12.6 to 13.0 | 32.0 to 34.0 | 66.0 to 68.0 |
| 2.2 to 2.4 | 6.2 to 6.6 | 13.0 to 14.0 | 34.0 to 36.0 | 68.0 to 70.0 |
| 2.4 to 2.6 | 6.6 to 7.0 | 14.0 to 15.0 | 36.0 to 38.0 | 70.0 to 72.0 |
| 2.6 to 2.8 | 7.0 to 7.4 | 15.0 to 16.0 | 38.0 to 40.0 | 72.0 to 74.0 |
| 2.8 to 3.0 | 7.4 to 7.8 | 16.0 to 17.0 | 40.0 to 42.0 | 74.0 to 76.0 |
| 3.0 to 3.2 | 7.8 to 8.2 | 17.0 to 18.0 | 42.0 to 44.0 | 76.0 to 78.0 |
| 3.2 to 3.4 | 8.2 to 8.6 | 18.0 to 19.0 | 44.0 to 46.0 | 78.0 to 80.0 |
| 3.4 to 3.6 | 8.6 to 9.0 | 19.0 to 20.0 | 46.0 to 48.0 | 80.0 to 82.0 |
| 3.6 to 3.8 | 9.0 to 9.4 | 20.0 to 21.0 | 48.0 to 50.0 | 82.0 to 84.0 |
| 3.8 to 4.0 | 9.4 to 9.8 | 21.0 to 22.0 | 50.0 to 52.0 | 84.0 to 86.0 |
| 4.0 to 4.2 | 9.8 to 10.2 | 22.0 to 23.0 | 52.0 to 54.0 | |
| 4.2 to 4.4 | 10.2 to 10.6 | 23.0 to 24.0 | 54.0 to 56.0 | |



Extent of Aerial Photography

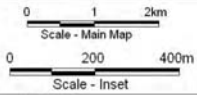
Extent of Aerial Photography

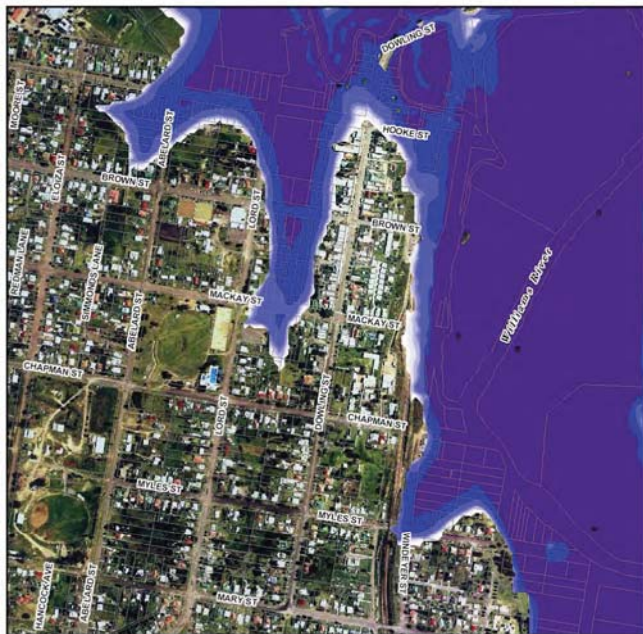
Title:
Williams River PMF Flood Event
Northern Area - Peak Water Level

Figure:
Drawing 62

Rev:
A

BMT WBM endeavours to ensure that the information provided in this map is correct at the time of publication. BMT WBM does not warrant, guarantee or make representations regarding the currency and accuracy of information contained in this map.





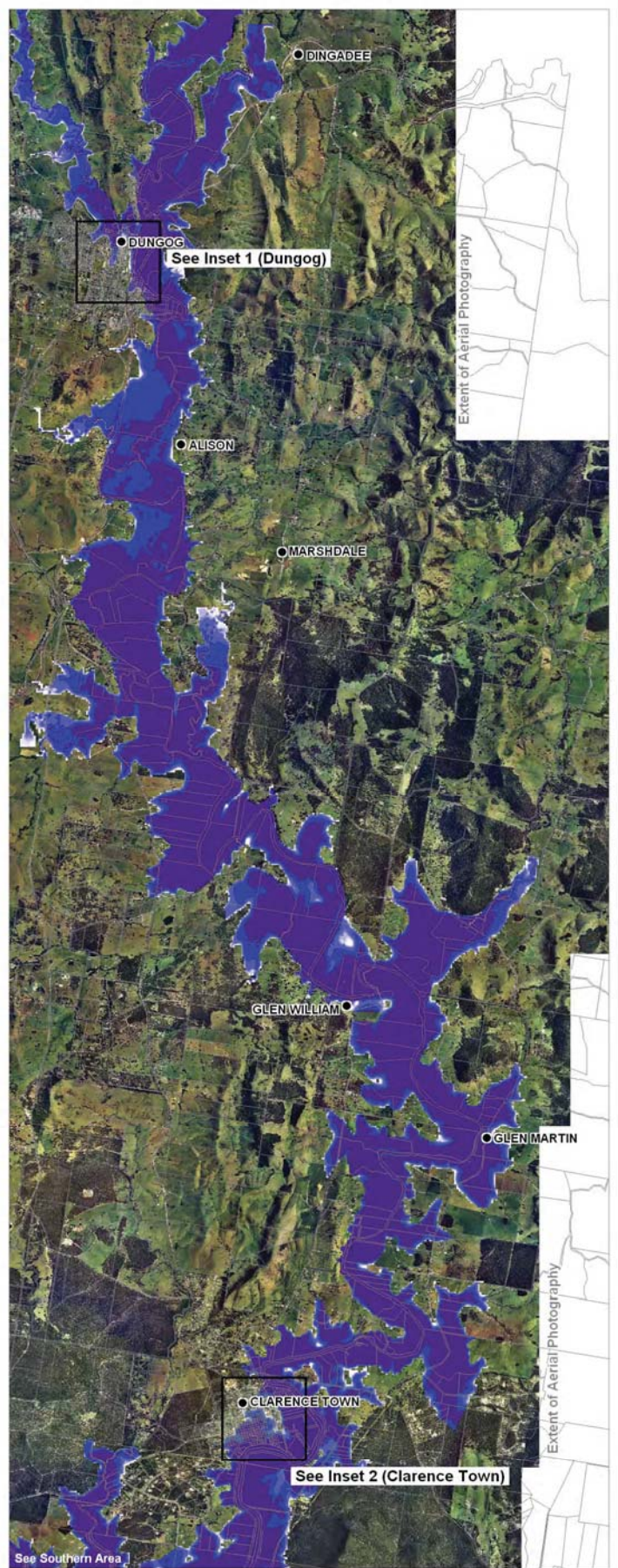
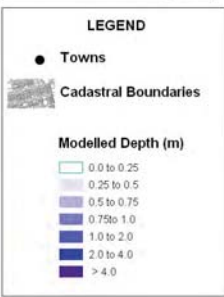
Inset 1 (Dungog)



Inset 2 (Clarence Town)



NOTE: Flood Model Simulations include future sea level rise

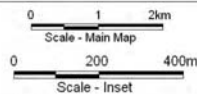


Title:
Williams River PMF Flood Event
Northern Area - Peak Depths

Figure:
Drawing 64

Rev:
A

BMT WBM endeavours to ensure that the information provided in this map is correct at the time of publication. BMT WBM does not warrant, guarantee or make representations regarding the currency and accuracy of information contained in this map.

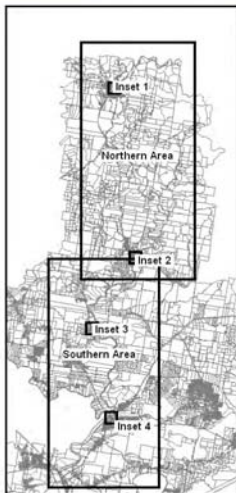




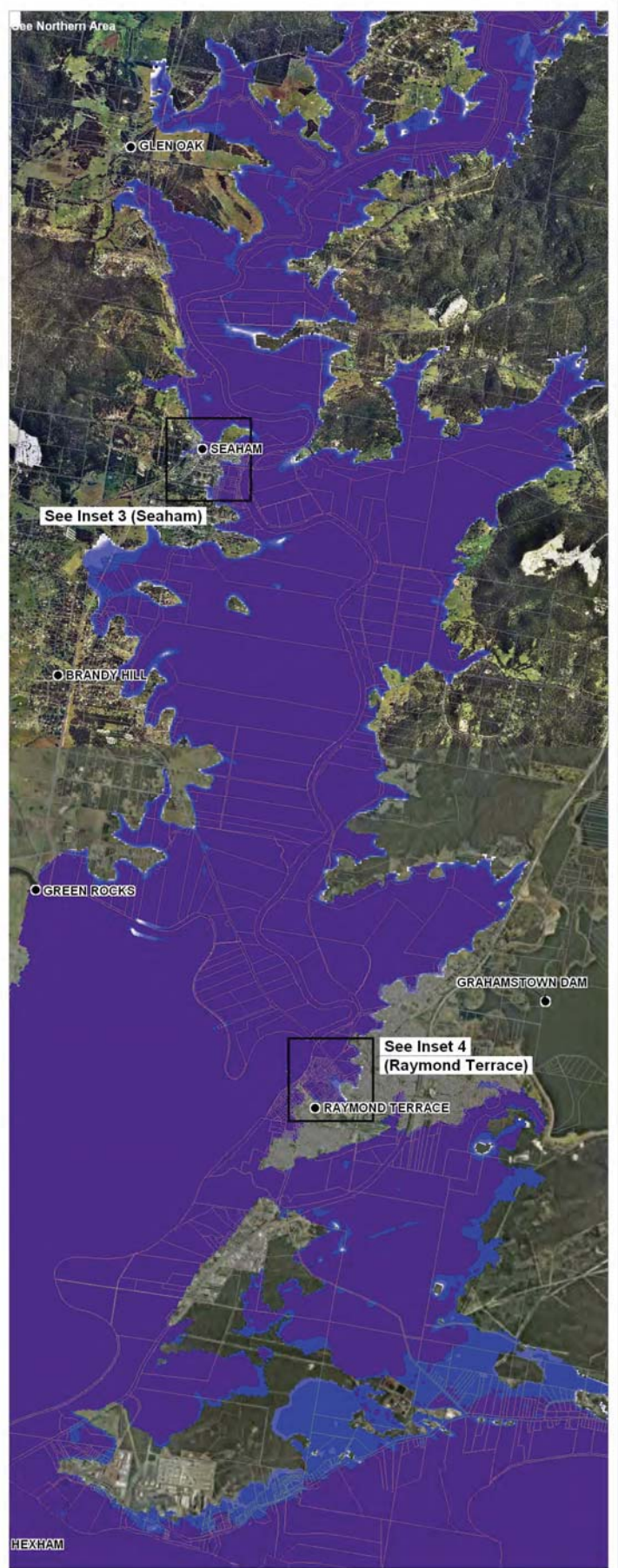
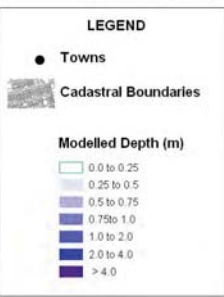
Inset 3 (Seaham)



Inset 4 (Raymond Terrace)



NOTE: Flood Model Simulations include future sea level rise



See Inset 3 (Seaham)

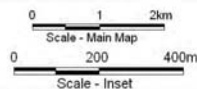
See Inset 4 (Raymond Terrace)

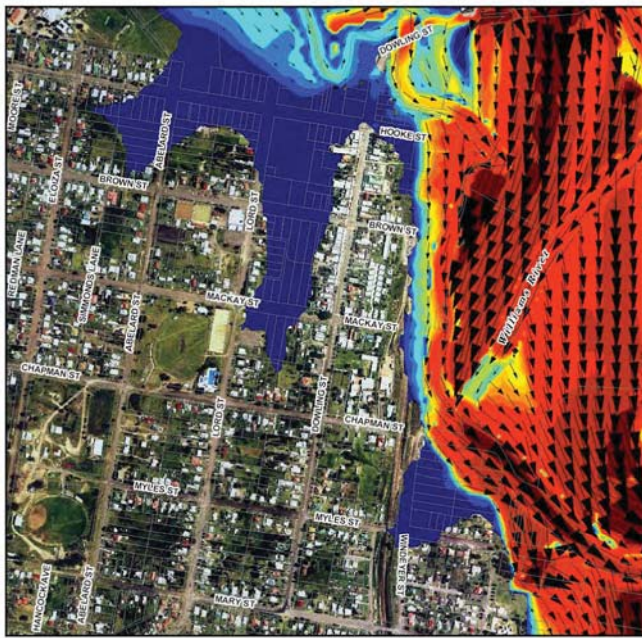
Title:
**Williams River PMF Flood Event
Southern Area - Peak Depths**

Figure:
Drawing 65

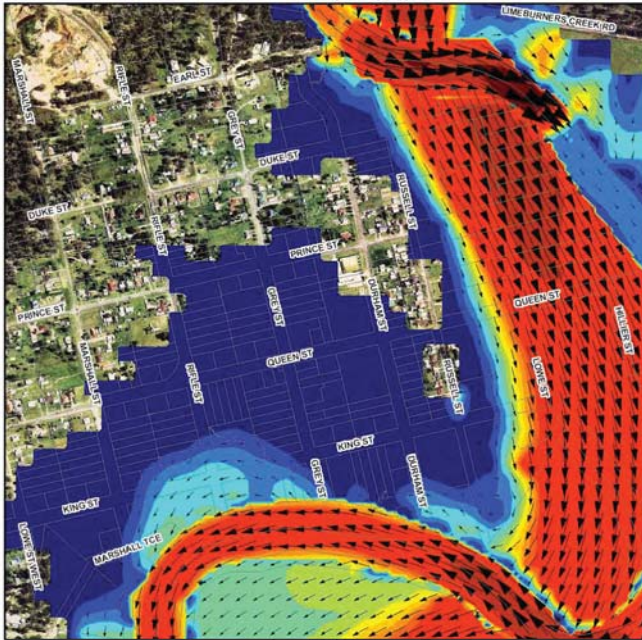
Rev:
A

BMT WBM endeavours to ensure that the information provided in this map is correct at the time of publication. BMT WBM does not warrant, guarantee or make representations regarding the currency and accuracy of information contained in this map.

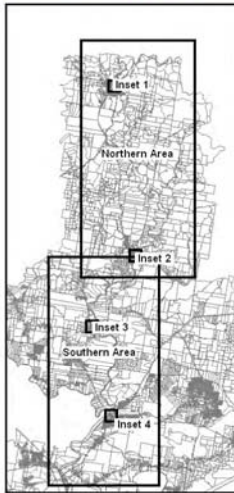




Inset 1 (Dungog)

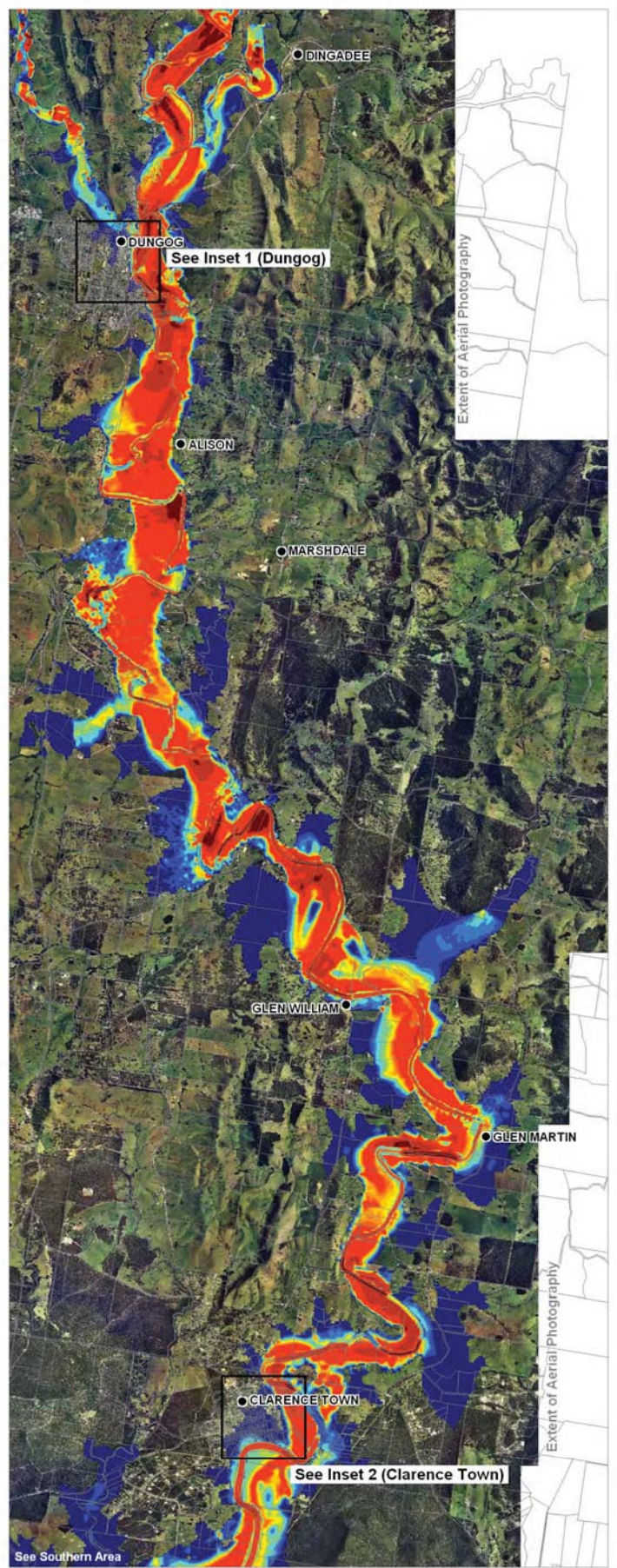


Inset 2 (Clarence Town)



NOTE: Flood Model Simulations include future sea level rise

| LEGEND | | | |
|---------------------------------------|----------------------|------------|------------|
| ● | Towns | | |
| ▭ | Cadastral Boundaries | | |
| Modelled Velocity at Peak Depth (m/s) | | | |
| Blue | 0.0 to 0.2 | Yellow | 1.4 to 1.6 |
| Light Blue | 0.2 to 0.4 | Orange | 1.6 to 1.8 |
| Light Green | 0.4 to 0.6 | Red-Orange | 1.8 to 2.0 |
| Green | 0.6 to 0.8 | Red | 2.0 to 3.5 |
| Light Yellow | 0.8 to 1.0 | Dark Red | 3.5 to 5.0 |
| Yellow | 1.0 to 1.2 | Black | > 5.0 |
| Orange | 1.2 to 1.4 | | |



Extent of Aerial Photography

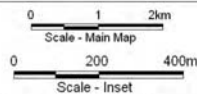
Extent of Aerial Photography

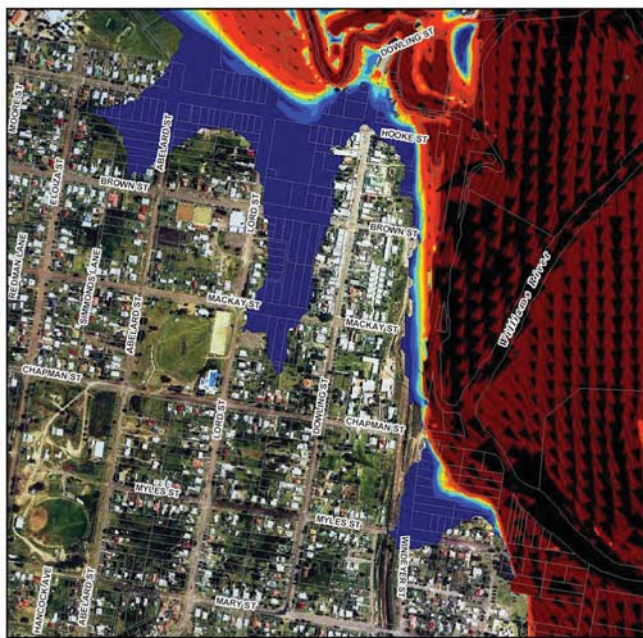
Title:
Williams River PMF Flood Event
Northern Area - Peak Velocities

Figure:
Drawing 66

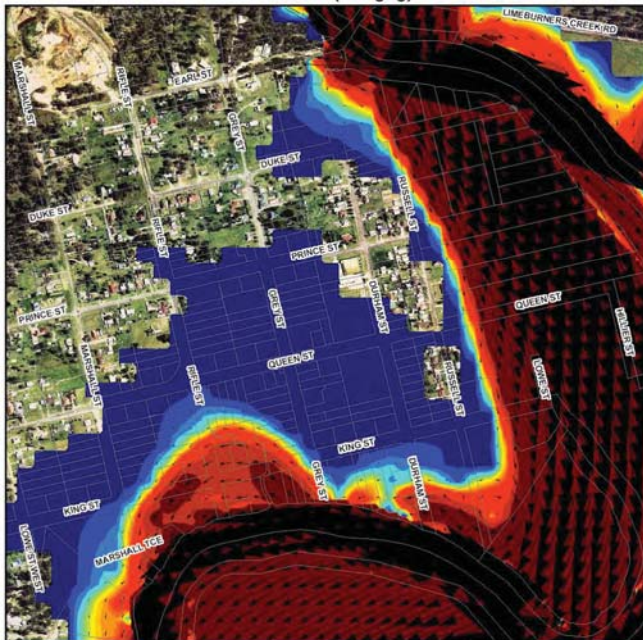
Rev:
A

BMT WBM endeavours to ensure that the information provided in this map is correct at the time of publication. BMT WBM does not warrant, guarantee or make representations regarding the currency and accuracy of information contained in this map.





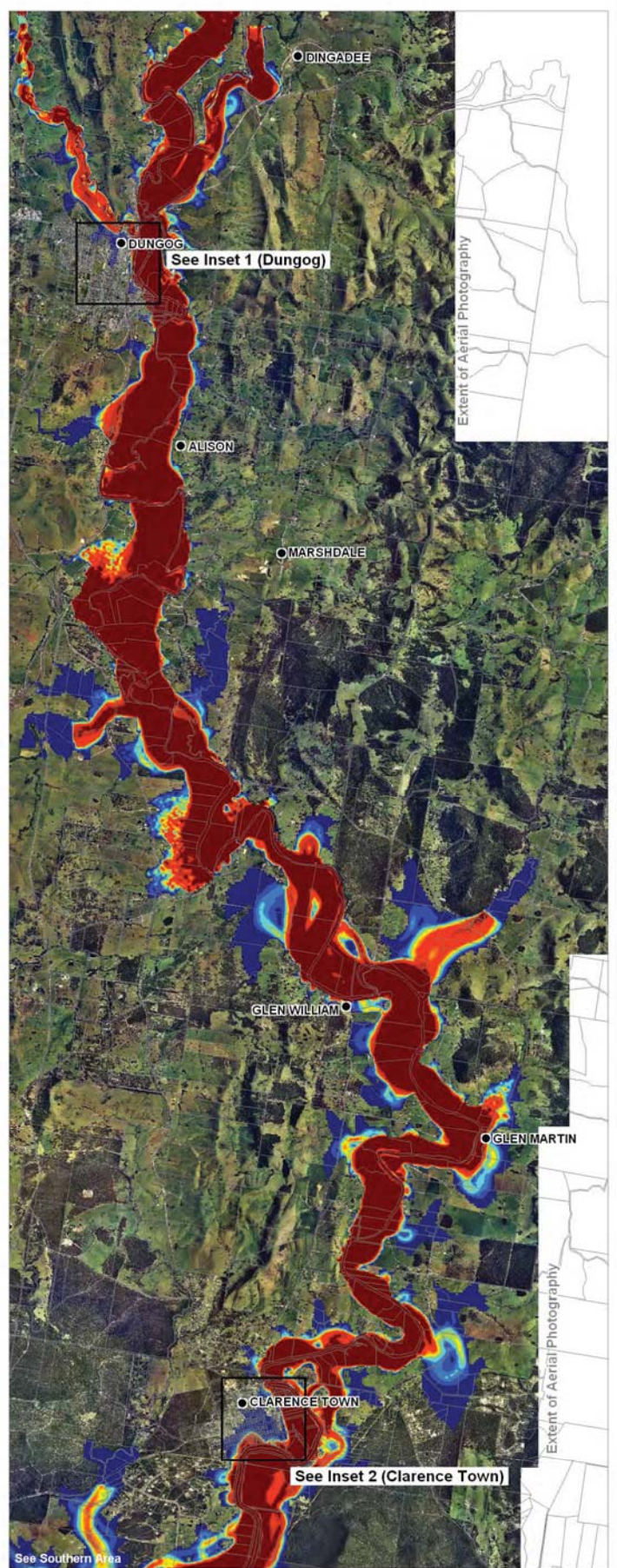
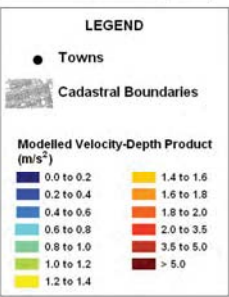
Inset 1 (Dungog)



Inset 2 (Clarence Town)



NOTE: Flood Model Simulations include future sea level rise



Extent of Aerial Photography

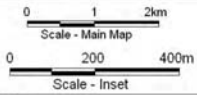
Extent of Aerial Photography

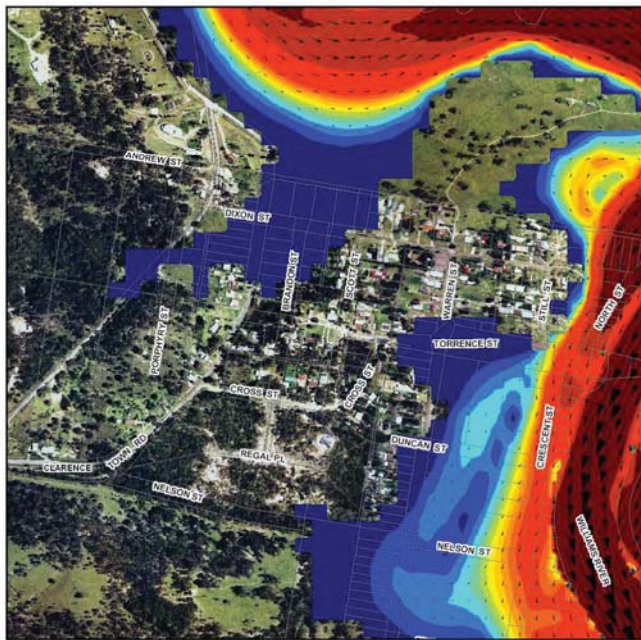
Title:
Williams River PMF Flood Event
Northern Area - Velocity-Depth Product

Figure:
Drawing 68

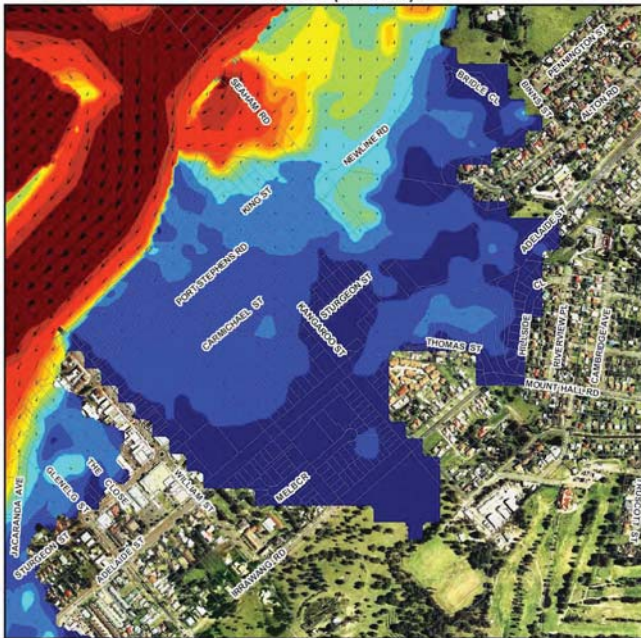
Rev:
A

BMT WBM endeavours to ensure that the information provided in this map is correct at the time of publication. BMT WBM does not warrant, guarantee or make representations regarding the currency and accuracy of information contained in this map.

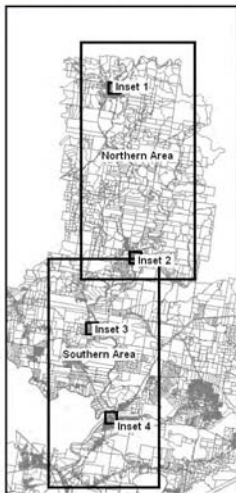
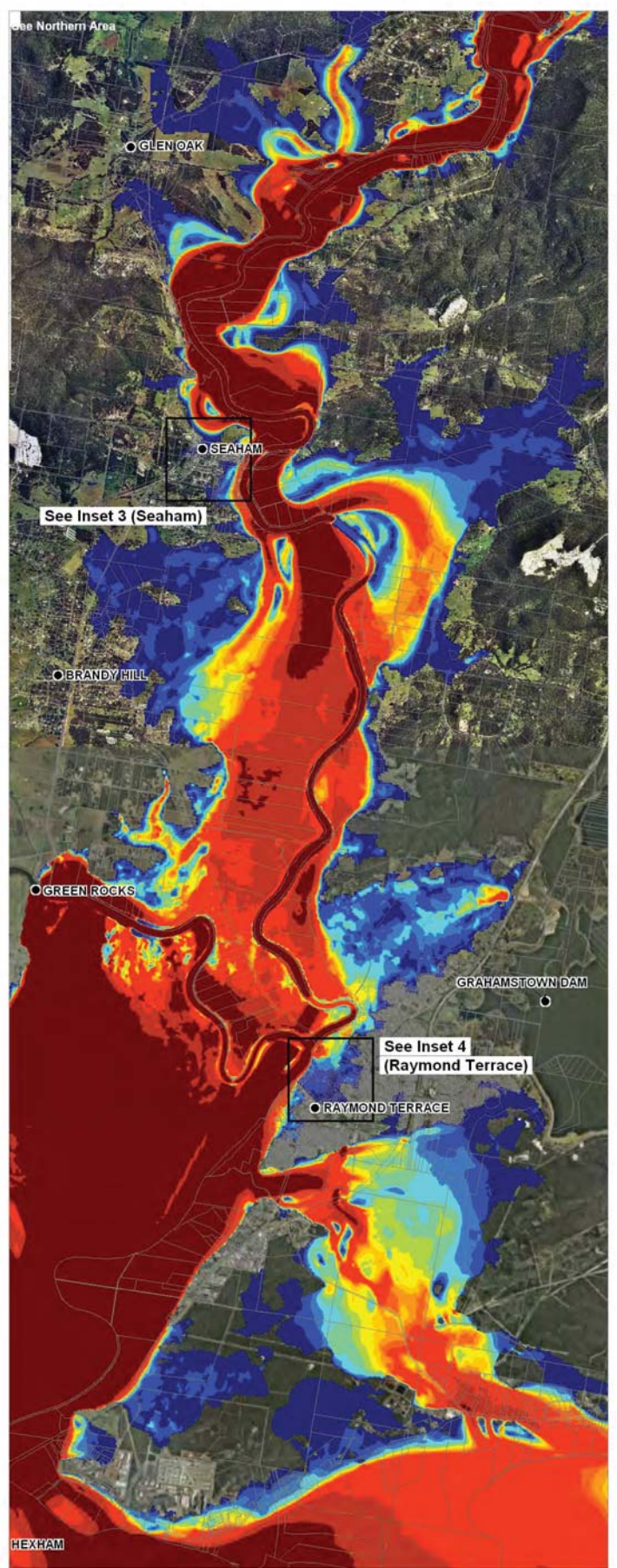




Inset 3 (Seaham)



Inset 4 (Raymond Terrace)



NOTE: Flood Model Simulations include future sea level rise

LEGEND

- Towns
- ▭ Cadastral Boundaries

Modelled Velocity-Depth Product (m/s²)

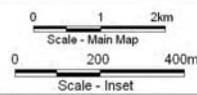
| | |
|------------|------------|
| 0.0 to 0.2 | 1.4 to 1.6 |
| 0.2 to 0.4 | 1.6 to 1.8 |
| 0.4 to 0.6 | 1.8 to 2.0 |
| 0.6 to 0.8 | 2.0 to 3.5 |
| 0.8 to 1.0 | 3.5 to 5.0 |
| 1.0 to 1.2 | > 5.0 |
| 1.2 to 1.4 | |

Title:
**Williams River PMF Flood Event
Southern Area - Velocity-Depth Product**

Figure:
Drawing 69

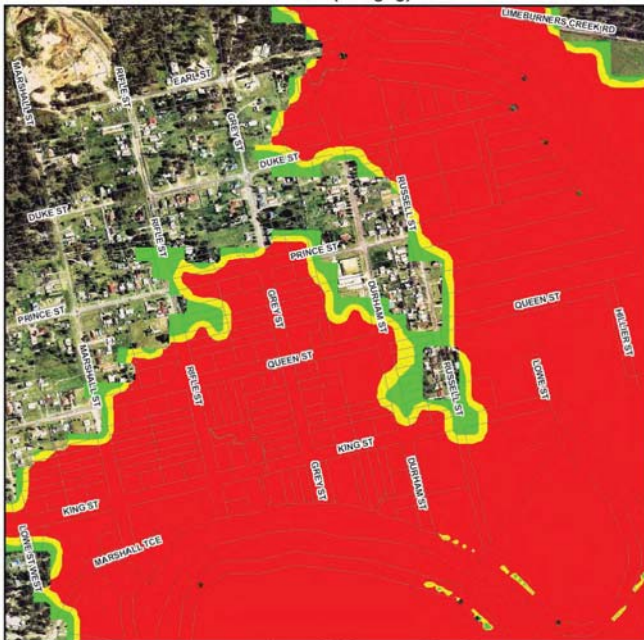
Rev:
A

BMT WBM endeavours to ensure that the information in this map is correct at the time of publication. BMT WBM does not warrant, guarantee or make representations regarding the currency and accuracy of information contained in this map.

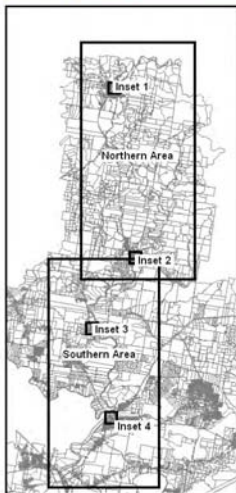




Inset 1 (Dungog)



Inset 2 (Clarence Town)



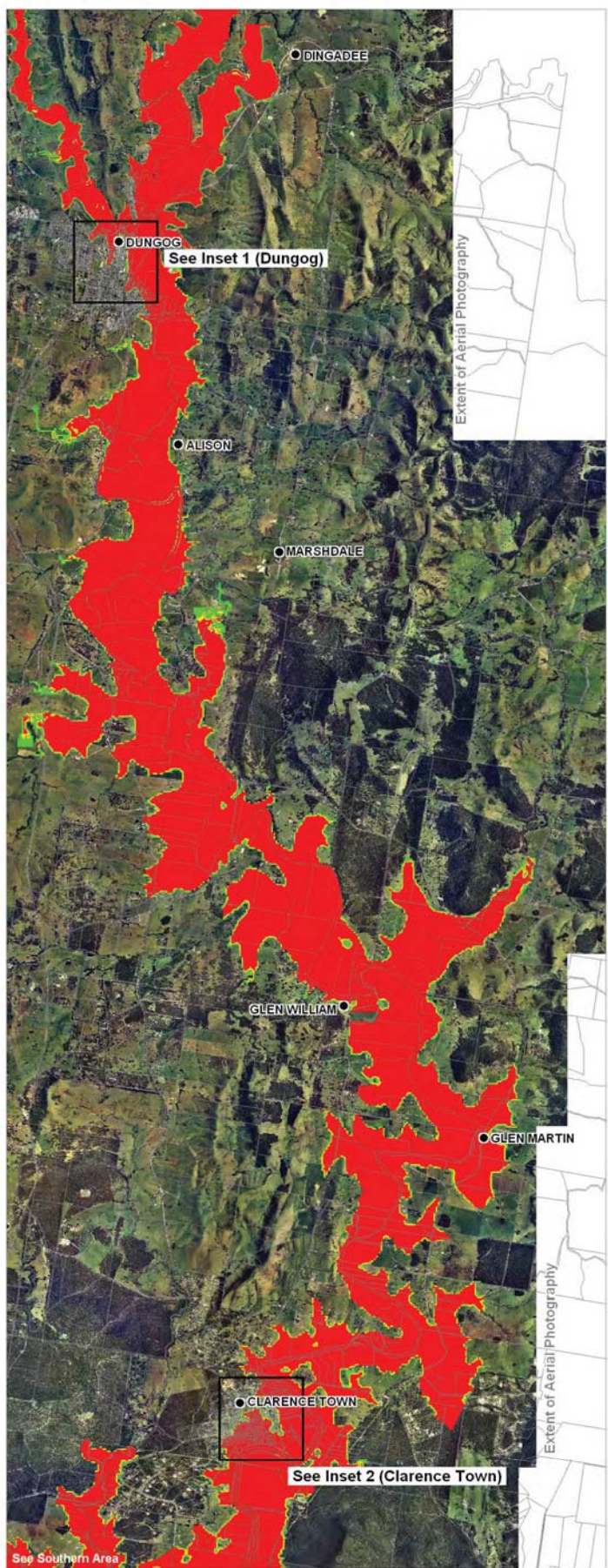
NOTE: Flood Model Simulations include future sea level rise

LEGEND

- Towns
- ▭ Cadastral Boundaries

Provisional Flood Hazard Category

- High Hazard
- Intermediate Hazard
- Low Hazard

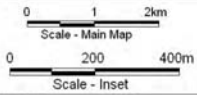


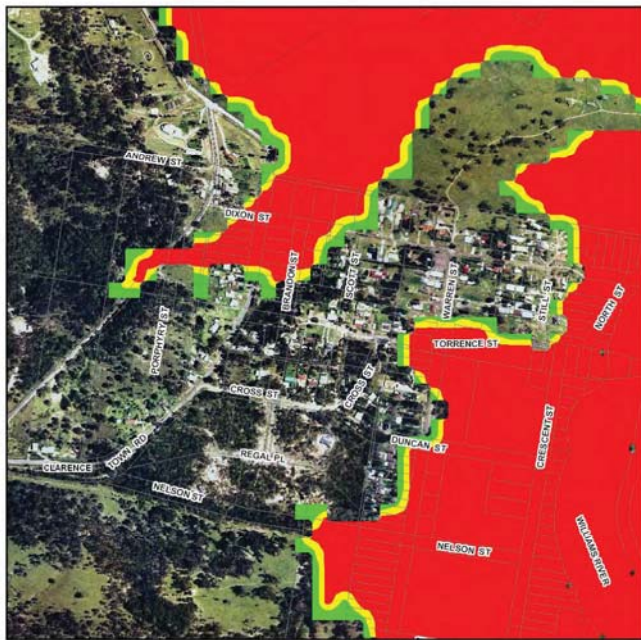
Title:
Williams River PMF Flood Event
Northern Area - Provisional Hazard

Figure:
Drawing 70

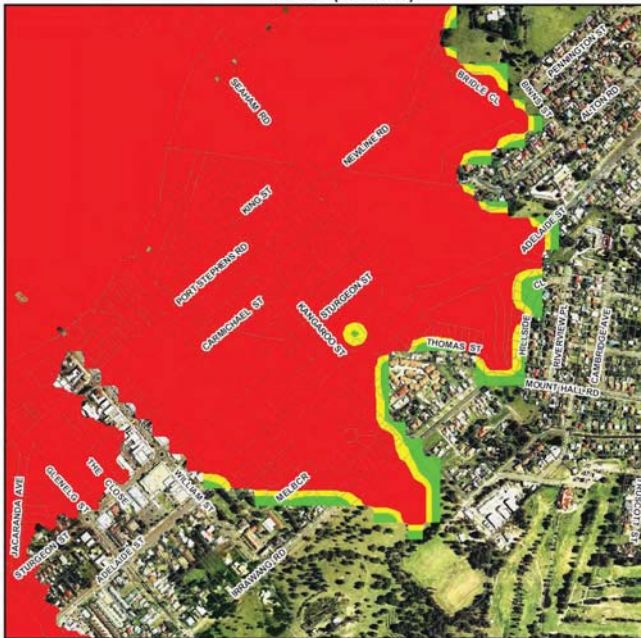
Rev.:
A

BMT WBM endeavours to ensure that the information provided in this map is correct at the time of publication. BMT WBM does not warrant, guarantee or make representations regarding the currency and accuracy of information contained in this map.

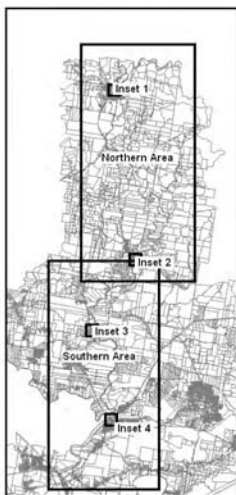




Inset 3 (Seaham)



Inset 4 (Raymond Terrace)



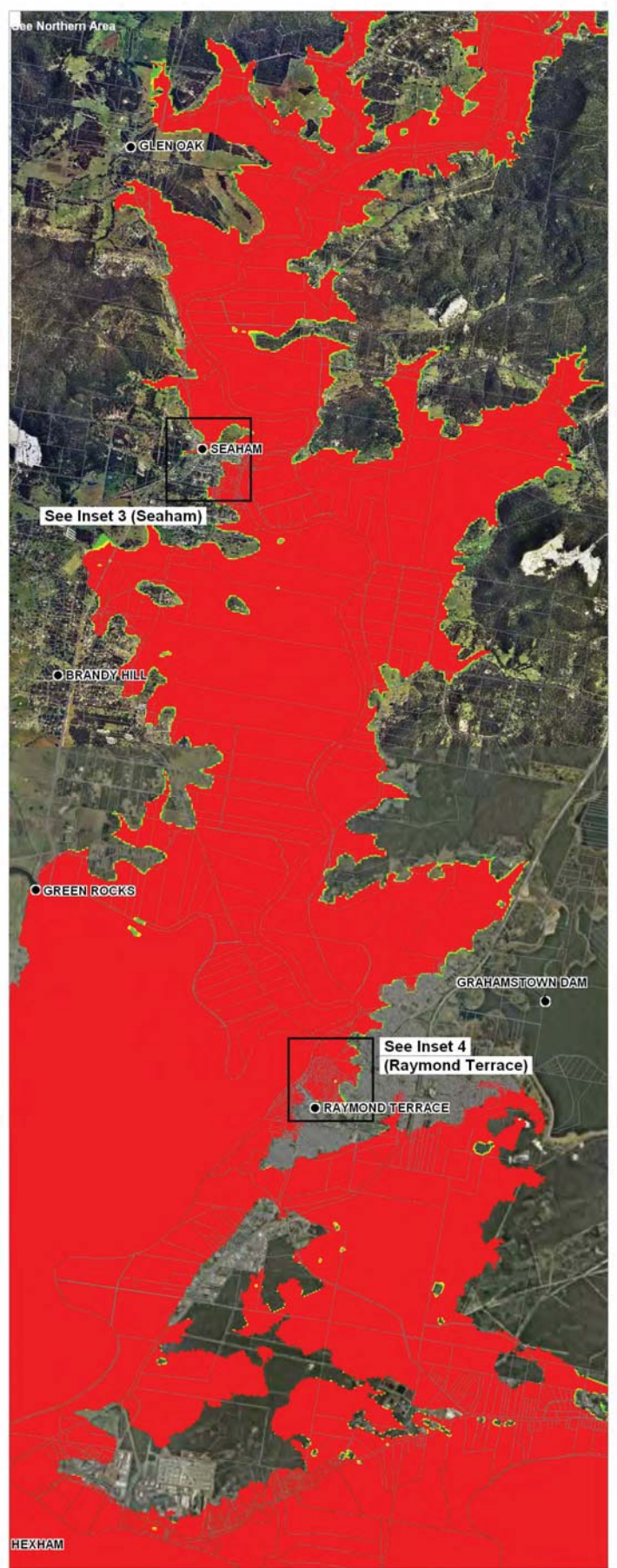
NOTE: Flood Model Simulations include future sea level rise

LEGEND

- Towns
- ▭ Cadastral Boundaries

Provisional Flood Hazard Category

- Red: High Hazard
- Yellow: Intermediate Hazard
- Green: Low Hazard



Title:
**Williams River PMF Flood Event
Southern Area - Provisional Hazard**

Figure:
Drawing 71

Rev:
A

BMT WBM endeavours to ensure that the information provided in this map is correct at the time of publication. BMT WBM does not warrant, guarantee or make representations regarding the currency and accuracy of information contained in this map.

