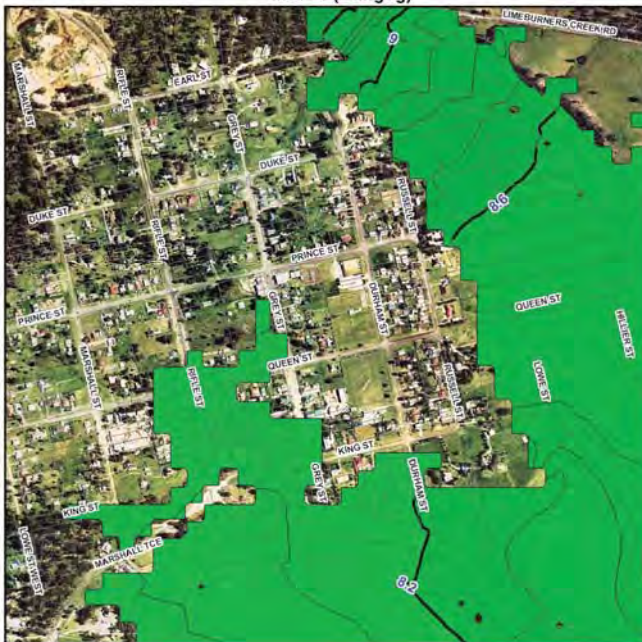




Inset 1 (Dungog)



Inset 2 (Clarence Town)



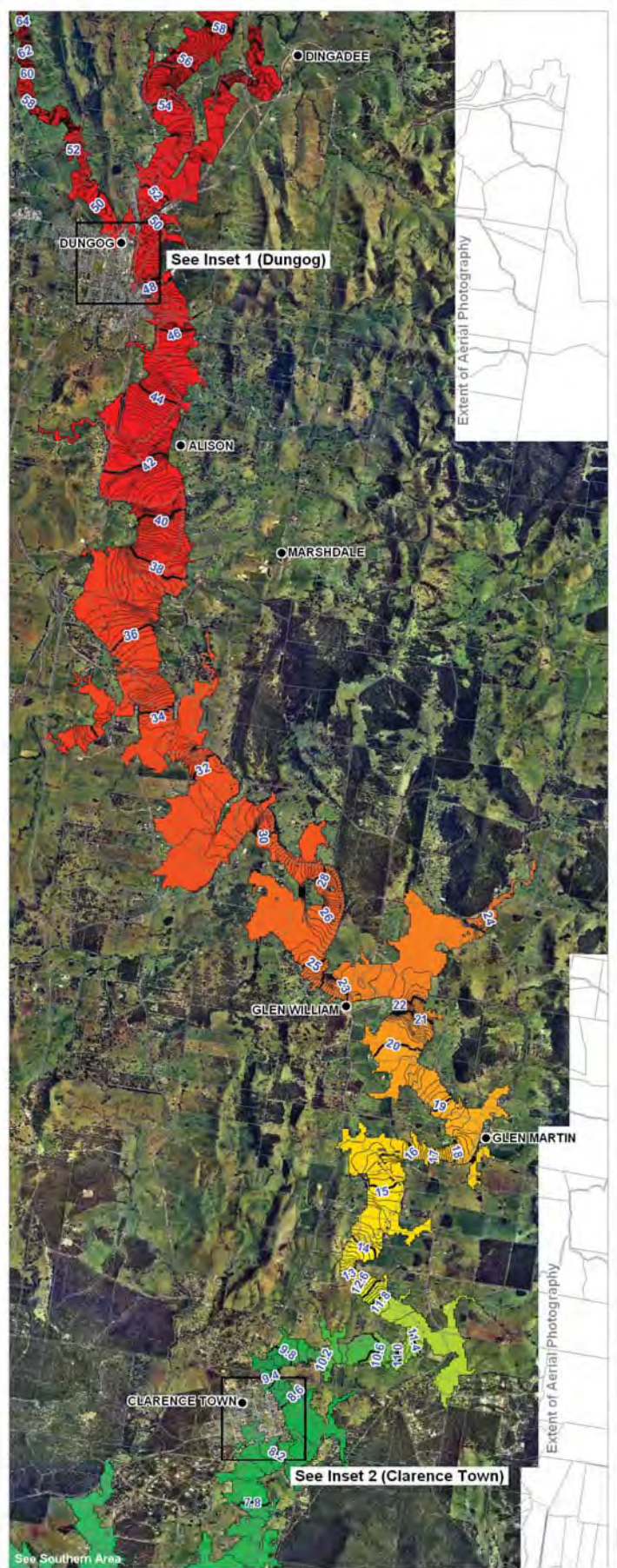
NOTE: Flood Model Simulations include future sea level rise

LEGEND

- Towns
- ▭ Cadastral Boundaries

Modelled Water Level (mAHD)

1.0 to 1.2	4.4 to 4.6	10.6 to 11.0	24.0 to 25.0	56.0 to 59.0
1.2 to 1.4	4.6 to 4.8	11.0 to 11.4	25.0 to 26.0	59.0 to 62.0
1.4 to 1.6	4.8 to 5.0	11.4 to 11.8	26.0 to 28.0	62.0 to 64.0
1.6 to 1.8	5.0 to 5.4	11.8 to 12.2	28.0 to 30.0	64.0 to 66.0
1.8 to 2.0	5.4 to 5.8	12.2 to 12.6	30.0 to 32.0	66.0 to 68.0
2.0 to 2.2	5.8 to 6.2	12.6 to 13.0	32.0 to 34.0	68.0 to 70.0
2.2 to 2.4	6.2 to 6.6	13.0 to 14.0	34.0 to 36.0	70.0 to 72.0
2.4 to 2.6	6.6 to 7.0	14.0 to 15.0	36.0 to 38.0	72.0 to 74.0
2.6 to 2.8	7.0 to 7.4	15.0 to 16.0	38.0 to 40.0	74.0 to 76.0
2.8 to 3.0	7.4 to 7.8	16.0 to 17.0	40.0 to 42.0	76.0 to 78.0
3.0 to 3.2	7.8 to 8.2	17.0 to 18.0	42.0 to 44.0	78.0 to 80.0
3.2 to 3.4	8.2 to 8.6	18.0 to 19.0	44.0 to 46.0	80.0 to 82.0
3.4 to 3.6	8.6 to 9.0	19.0 to 20.0	46.0 to 48.0	82.0 to 84.0
3.6 to 3.8	9.0 to 9.4	20.0 to 21.0	48.0 to 50.0	84.0 to 86.0
3.8 to 4.0	9.4 to 9.8	21.0 to 22.0	50.0 to 52.0	86.0 to 88.0
4.0 to 4.2	9.8 to 10.2	22.0 to 23.0	52.0 to 54.0	88.0 to 90.0
4.2 to 4.4	10.2 to 10.6	23.0 to 24.0	54.0 to 56.0	



Extent of Aerial Photography

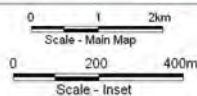
Extent of Aerial Photography

Title:
Williams River 1% AEP Flood Event
Northern Area - Peak Water Level

Figure:
Drawing 12

Rev:
A

BMT WBM endeavours to ensure that the information provided in this map is correct at the time of publication. BMT WBM does not warrant, guarantee or make representations regarding the currency and accuracy of information contained in this map.

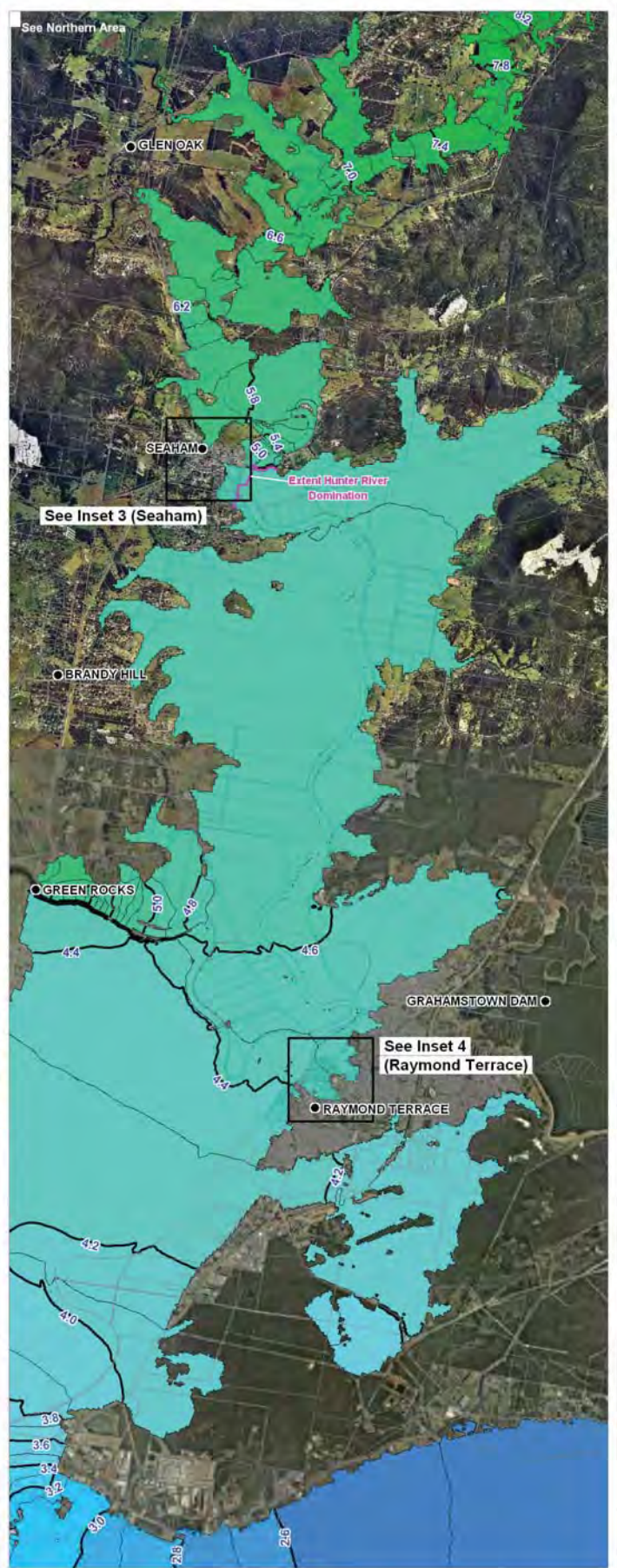




Inset 3 (Seaham)



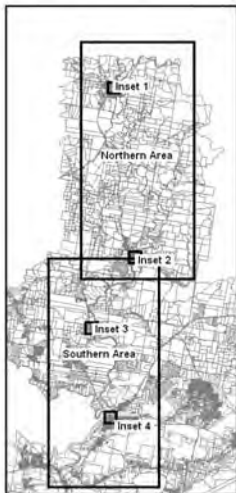
Inset 4 (Raymond Terrace)



See Northern Area

See Inset 3 (Seaham)

See Inset 4 (Raymond Terrace)



NOTE: Flood Model Simulations include future sea level rise

LEGEND

- Towns
- ▭ Cadastral Boundaries

Modelled Water Level (mAHD)

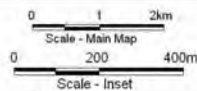
1.0 to 1.2	4.4 to 4.6	10.6 to 11.0	24.0 to 25.0	56.0 to 58.0
1.2 to 1.4	4.6 to 4.8	11.0 to 11.4	25.0 to 26.0	58.0 to 60.0
1.4 to 1.6	4.8 to 5.0	11.4 to 11.8	26.0 to 28.0	60.0 to 62.0
1.6 to 1.8	5.0 to 5.4	11.8 to 12.2	28.0 to 30.0	62.0 to 64.0
1.8 to 2.0	5.4 to 5.8	12.2 to 12.6	30.0 to 32.0	64.0 to 66.0
2.0 to 2.2	5.8 to 6.2	12.6 to 13.0	32.0 to 34.0	66.0 to 68.0
2.2 to 2.4	6.2 to 6.6	13.0 to 14.0	34.0 to 36.0	68.0 to 70.0
2.4 to 2.6	6.6 to 7.0	14.0 to 15.0	36.0 to 38.0	70.0 to 72.0
2.6 to 2.8	7.0 to 7.4	15.0 to 16.0	38.0 to 40.0	72.0 to 74.0
2.8 to 3.0	7.4 to 7.8	16.0 to 17.0	40.0 to 42.0	74.0 to 76.0
3.0 to 3.2	7.8 to 8.2	17.0 to 18.0	42.0 to 44.0	76.0 to 78.0
3.2 to 3.4	8.2 to 8.6	18.0 to 19.0	44.0 to 46.0	78.0 to 80.0
3.4 to 3.6	8.6 to 9.0	19.0 to 20.0	46.0 to 48.0	80.0 to 82.0
3.6 to 3.8	9.0 to 9.4	20.0 to 21.0	48.0 to 50.0	82.0 to 84.0
3.8 to 4.0	9.4 to 9.8	21.0 to 22.0	50.0 to 52.0	84.0 to 86.0
4.0 to 4.2	9.8 to 10.2	22.0 to 23.0	52.0 to 54.0	86.0 to 88.0
4.2 to 4.4	10.2 to 10.6	23.0 to 24.0	54.0 to 56.0	88.0 to 90.0

Title:
Williams River 1% AEP Flood Event
Southern Area - Peak Water Level

Figure:
Drawing 13

Rev:
A

BMT WBM endeavours to ensure that the information provided in this map is correct at the time of publication. BMT WBM does not warrant, guarantee or make representations regarding the currency and accuracy of information contained in this map.





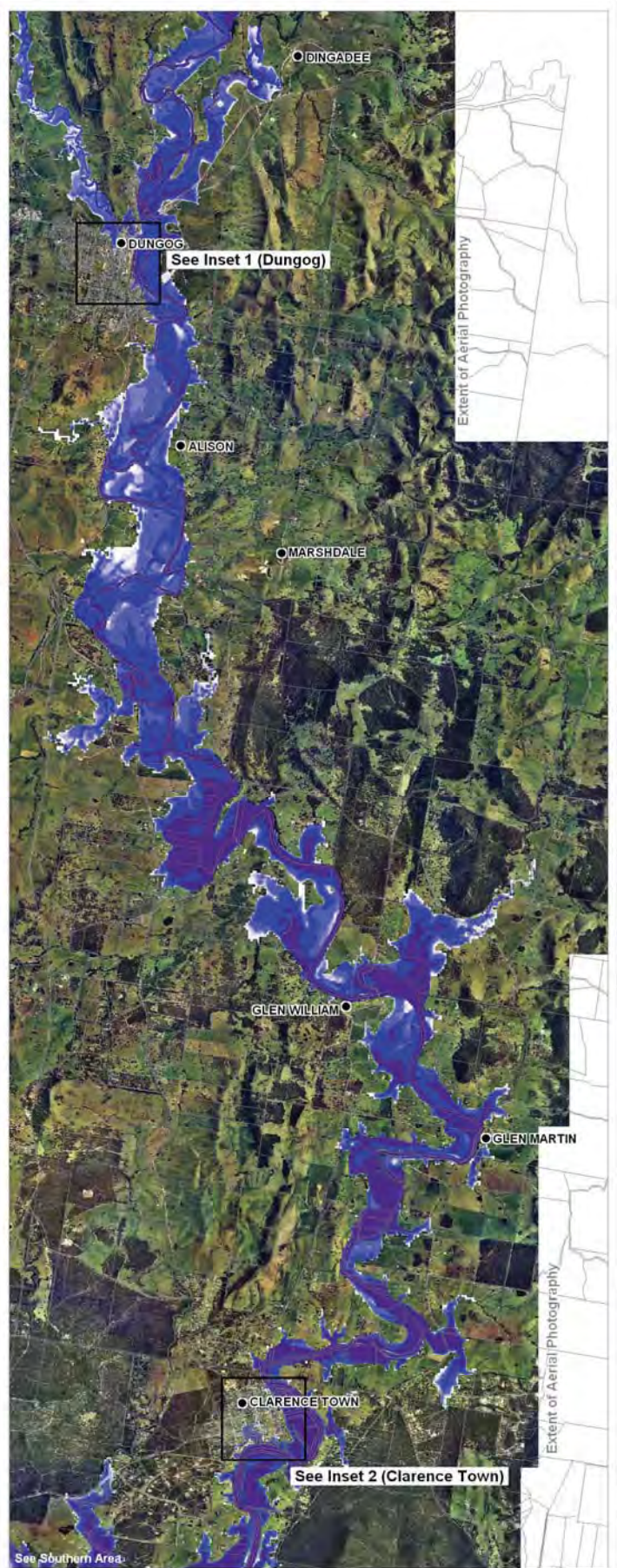
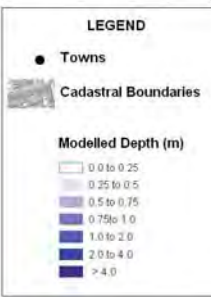
Inset 1 (Dungog)



Inset 2 (Clarence Town)



NOTE: Flood Model Simulations include future sea level rise

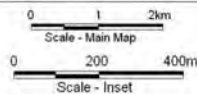


Title:
**Williams River 1% AEP Flood Event
Northern Area - Peak Depths**

Figure:
Drawing 14

Rev:
A

BMT WBM endeavours to ensure that the information in this map is correct at the time of publication. BMT WBM does not warrant, guarantee or make representations regarding the currency and accuracy of information contained in this map.

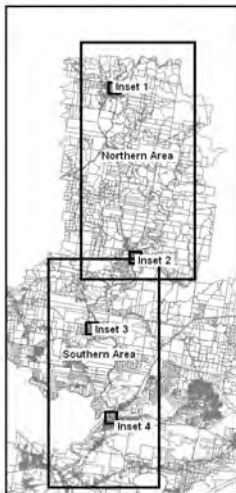
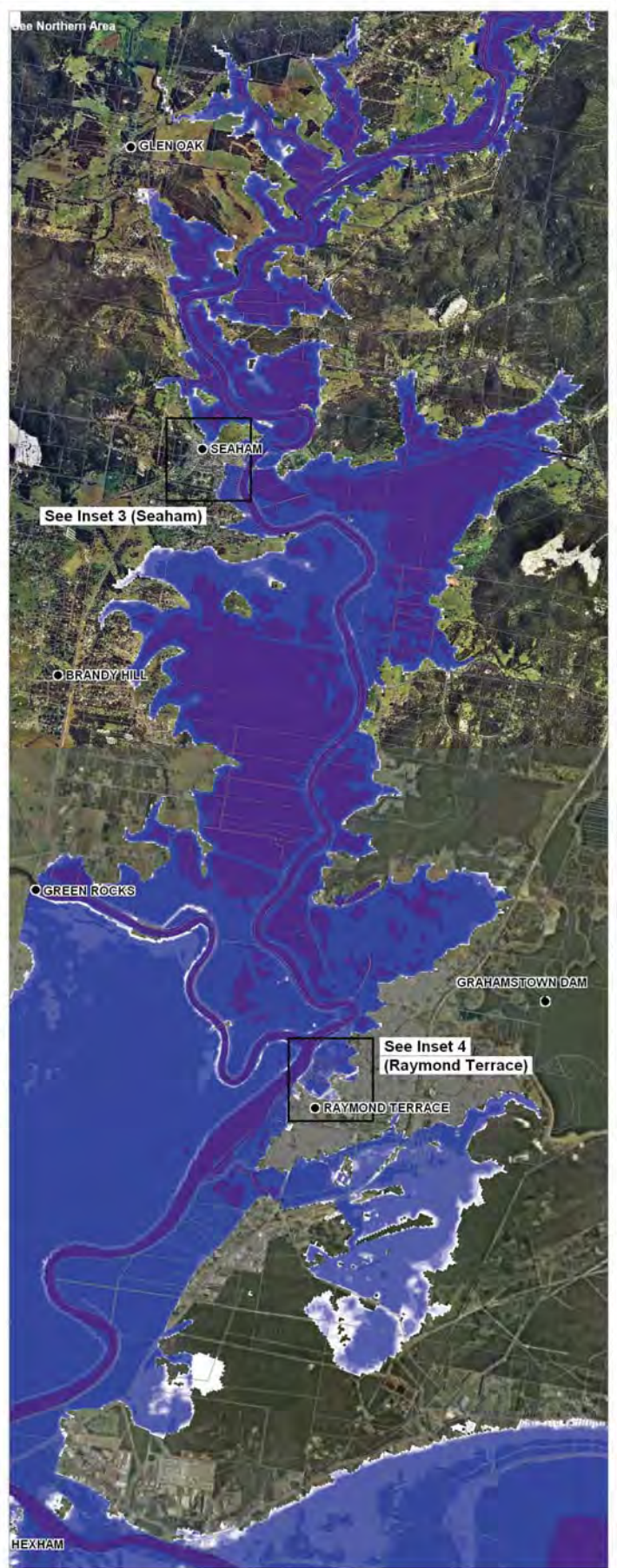




Inset 3 (Seaham)



Inset 4 (Raymond Terrace)



NOTE: Flood Model Simulations include future sea level rise

LEGEND

- Towns
- ▭ Cadastral Boundaries

Modelled Depth (m)

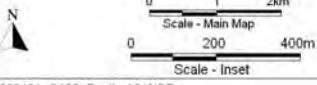
- 0.0 to 0.25
- 0.25 to 0.5
- 0.5 to 0.75
- 0.75 to 1.0
- 1.0 to 2.0
- 2.0 to 4.0
- > 4.0

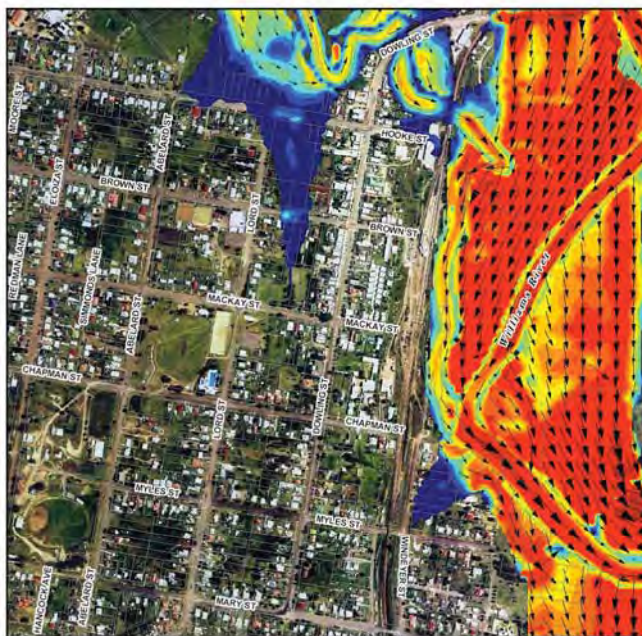
Title:
Williams River 1% AEP Flood Event
Southern Area - Peak Depths

Figure:
Drawing 15

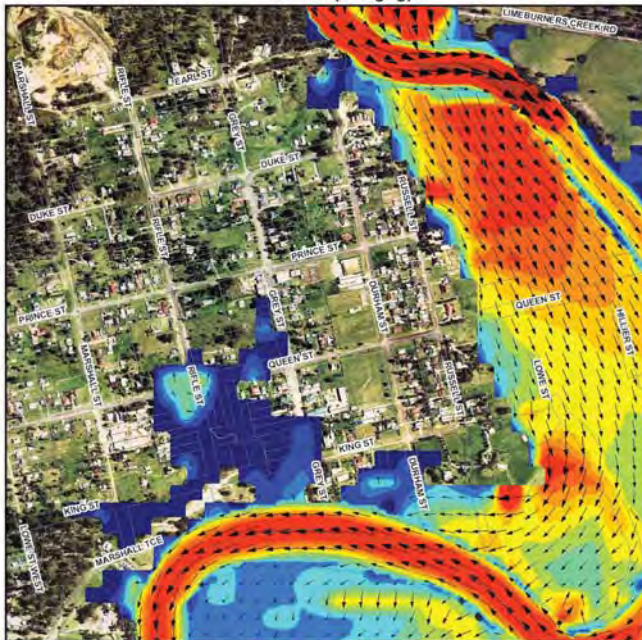
Rev:
A

BMT WBM endeavours to ensure that the information provided in this map is correct at the time of publication. BMT WBM does not warrant, guarantee or make representations regarding the currency and accuracy of information contained in this map.





Inset 1 (Dungog)



Inset 2 (Clarence Town)



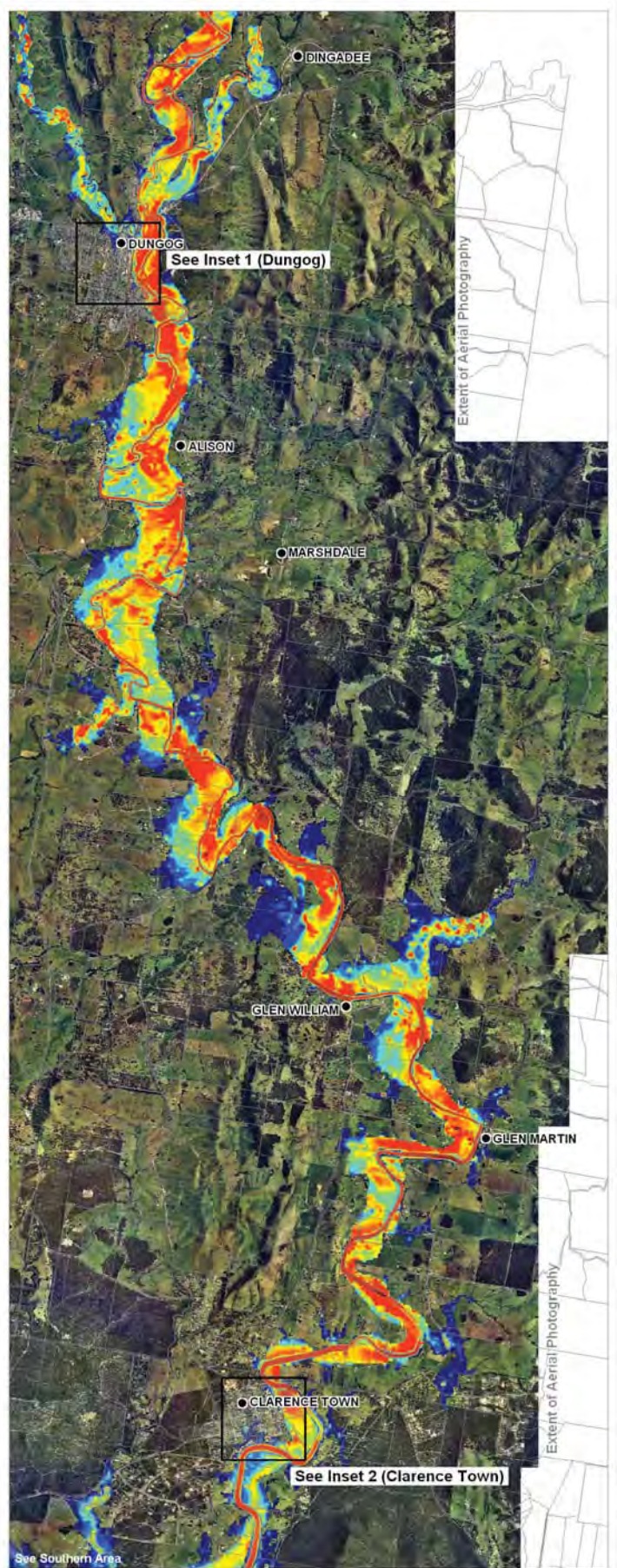
NOTE: Flood Model Simulations include future sea level rise

LEGEND

- Towns
- ▭ Cadastral Boundaries

Modelled Velocity at Peak Depth (m/s)

0.0 to 0.2	1.4 to 1.6
0.2 to 0.4	1.6 to 1.8
0.4 to 0.6	1.8 to 2.0
0.6 to 0.8	2.0 to 3.5
0.8 to 1.0	3.5 to 5.0
1.0 to 1.2	> 5.0
1.2 to 1.4	

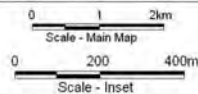


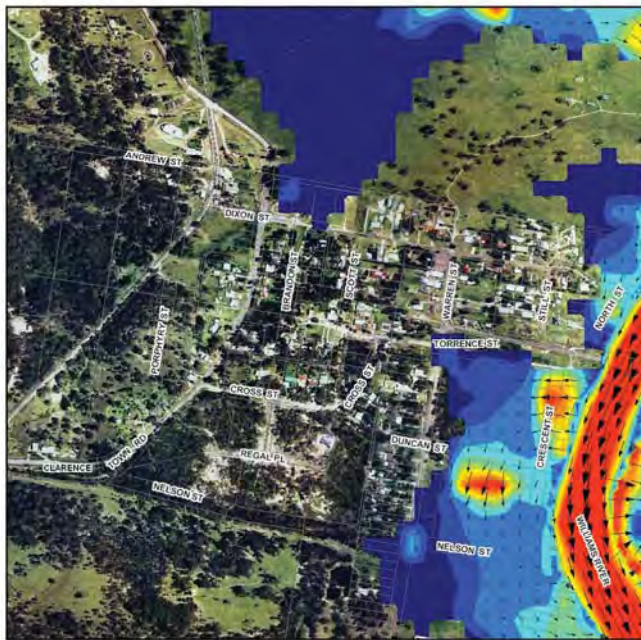
Title:
Williams River 1% AEP Flood Event
Northern Area - Peak Velocities

Figure:
Drawing 16

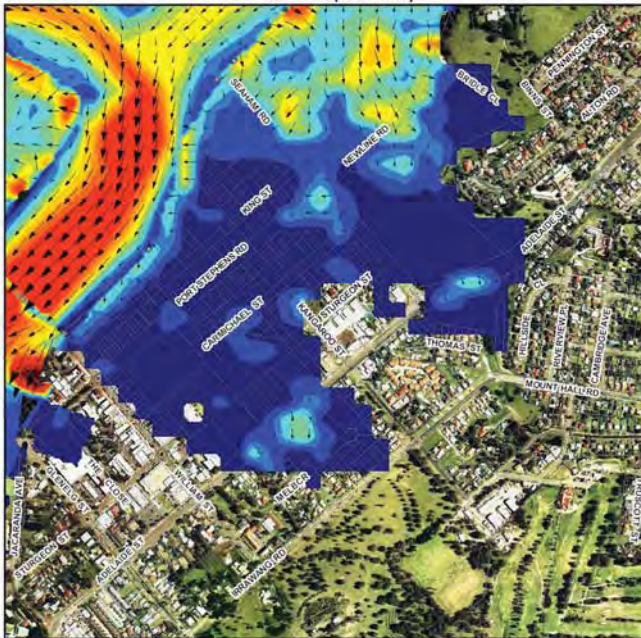
Rev:
A

BMT WBM endeavours to ensure that the information provided in this map is correct at the time of publication. BMT WBM does not warrant, guarantee or make representations regarding the currency and accuracy of information contained in this map.

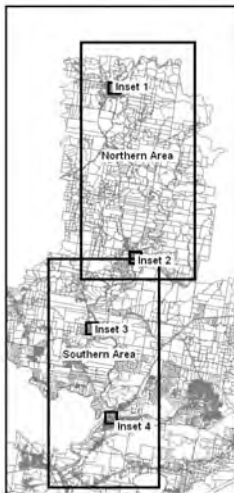




Inset 3 (Seaham)



Inset 4 (Raymond Terrace)



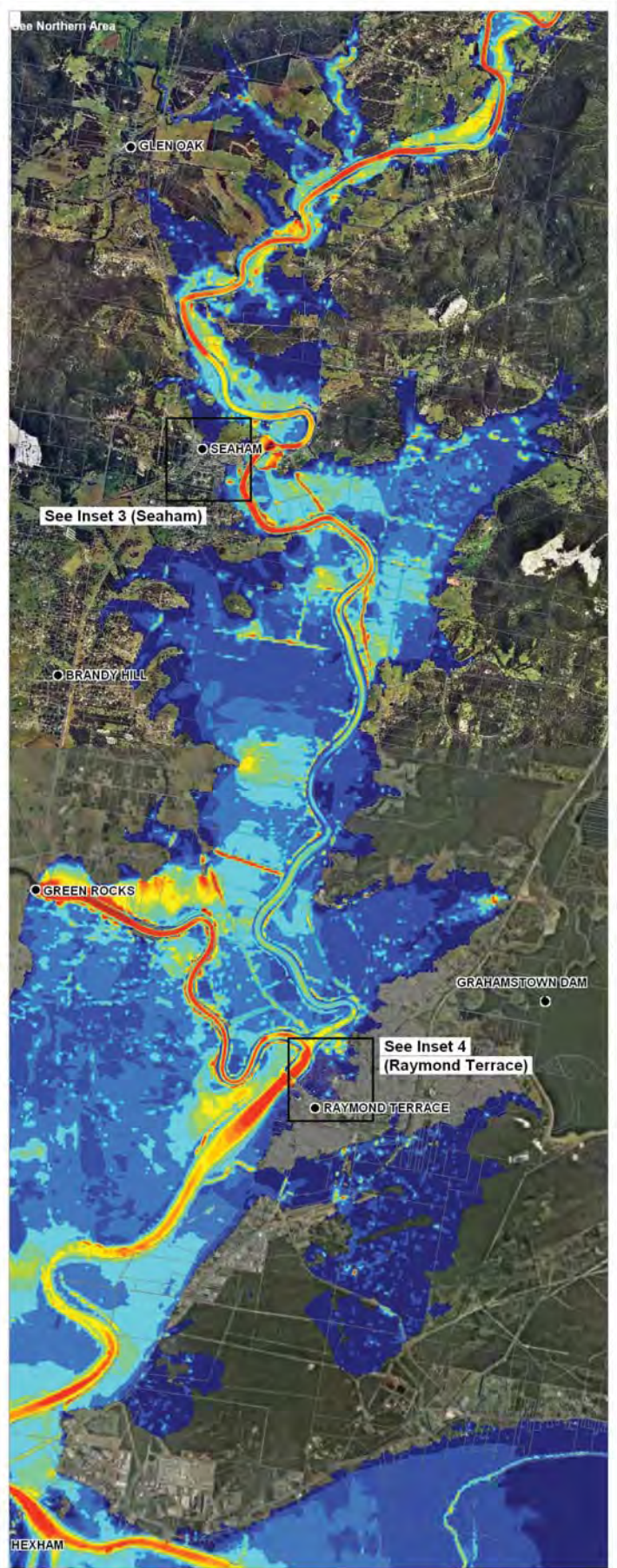
NOTE: Flood Model Simulations include future sea level rise

LEGEND

- Towns
- ▭ Cadastral Boundaries

Modelled Velocity at Peak Depth (m/s)

0.0 to 0.2	1.4 to 1.6
0.2 to 0.4	1.6 to 1.8
0.4 to 0.6	1.8 to 2.0
0.6 to 0.8	2.0 to 3.5
0.8 to 1.0	3.5 to 5.0
1.0 to 1.2	> 5.0
1.2 to 1.4	

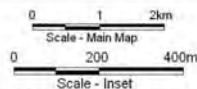


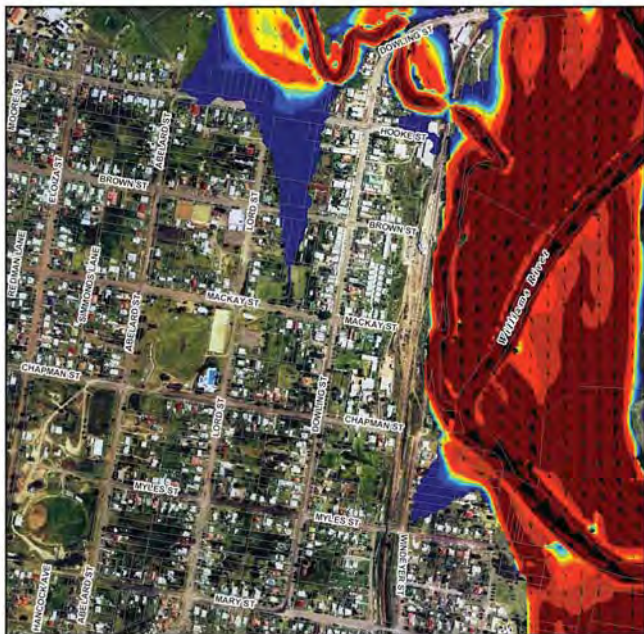
Title:
Williams River 1% AEP Flood Event
Southern Area - Peak Velocities

Figure:
Drawing 17

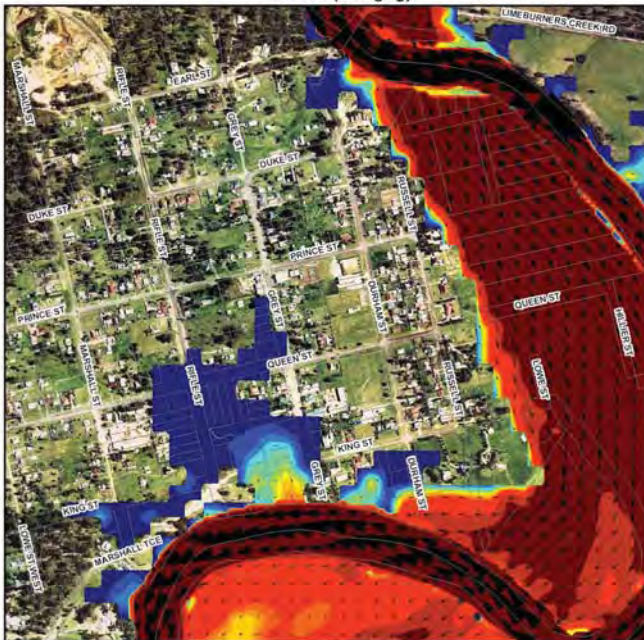
Rev:
A

BMT WBM endeavours to ensure that the information provided in this map is correct at the time of publication. BMT WBM does not warrant, guarantee or make representations regarding the currency and accuracy of information contained in this map.

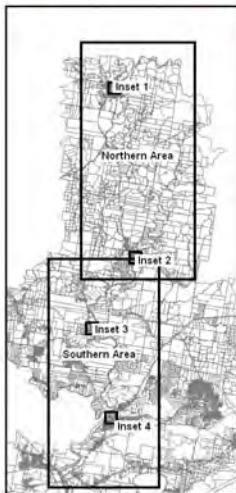




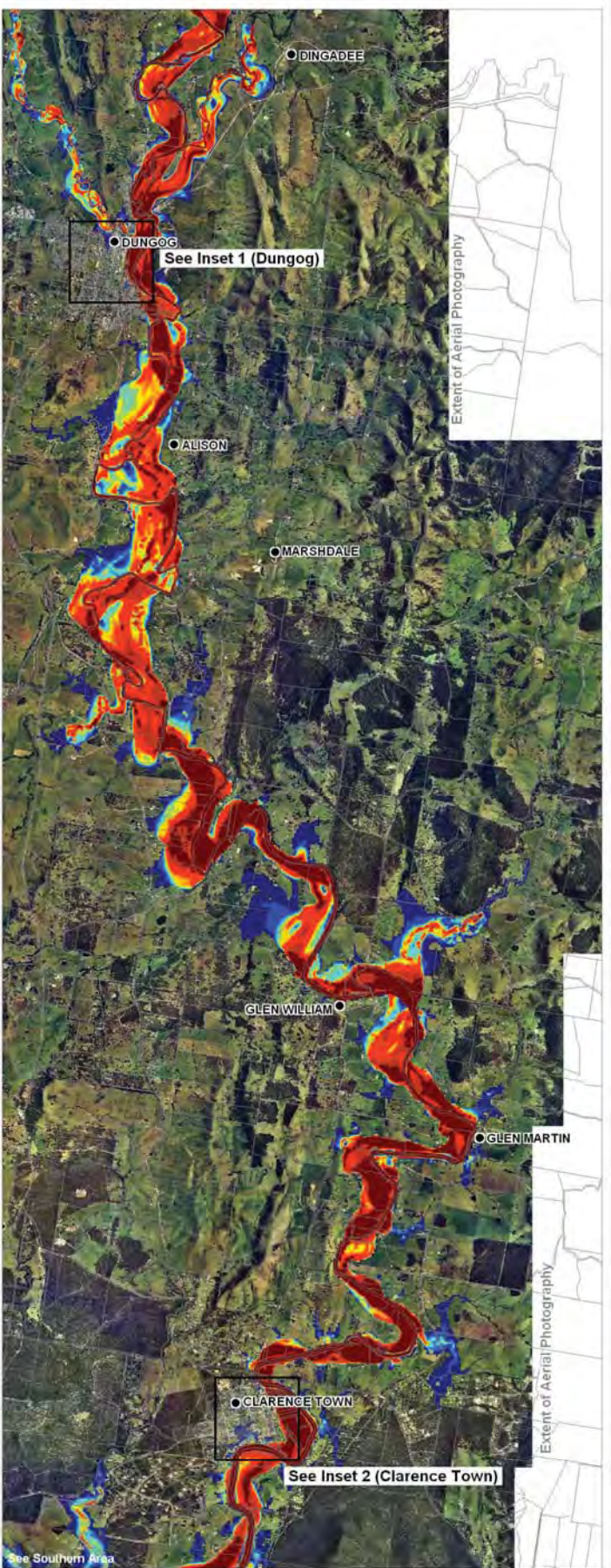
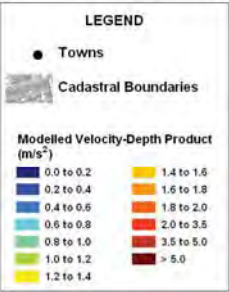
Inset 1 (Dungog)



Inset 2 (Clarence Town)



NOTE: Flood Model Simulations include future sea level rise

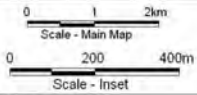


Title:
**Williams River 1% AEP Flood Event
Northern Area - Velocity-Depth Product**

Figure:
Drawing 18

Rev:
A

BMT WBM endeavours to ensure that the information provided in this map is correct at the time of publication. BMT WBM does not warrant, guarantee or make representations regarding the currency and accuracy of information contained in this map.

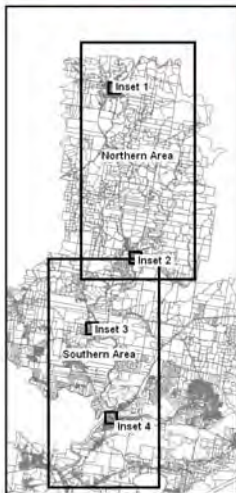




Inset 1 (Dungog)



Inset 2 (Clarence Town)



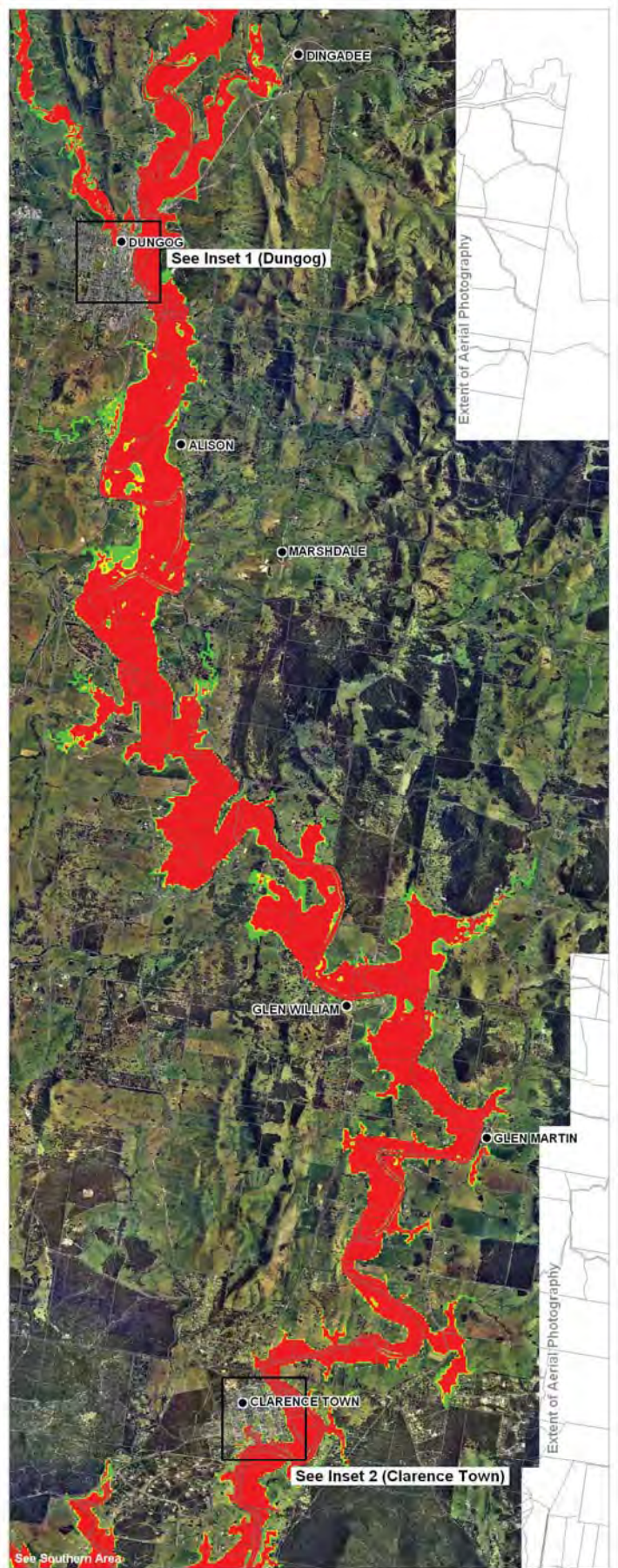
NOTE: Flood Model Simulations include future sea level rise

LEGEND

- Towns
- ▭ Cadastral Boundaries

Provisional Flood Hazard Category

- High Hazard
- Intermediate Hazard
- Low Hazard



Extent of Aerial Photography

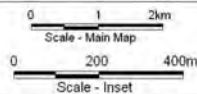
Extent of Aerial Photography

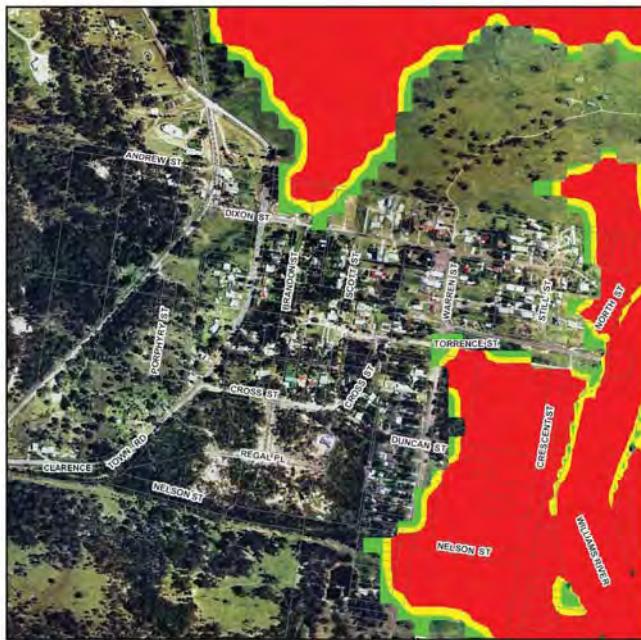
Title:
**Williams River 1% AEP Flood Event
Northern Area - Provisional Hazard**

Figure:
Drawing 20

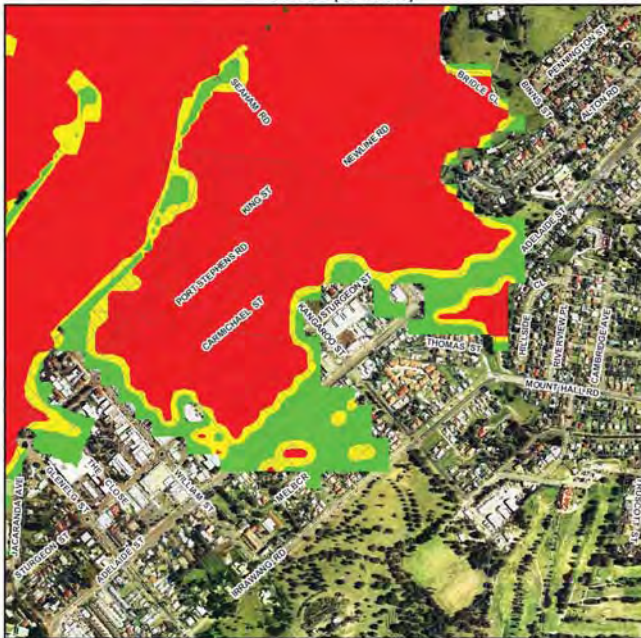
Rev:
A

BMT WBM endeavours to ensure that the information provided in this map is correct at the time of publication. BMT WBM does not warrant, guarantee or make representations regarding the currency and accuracy of information contained in this map.

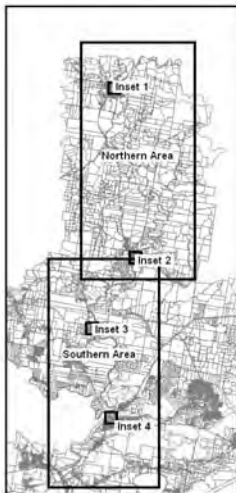




Inset 3 (Seaham)



Inset 4 (Raymond Terrace)



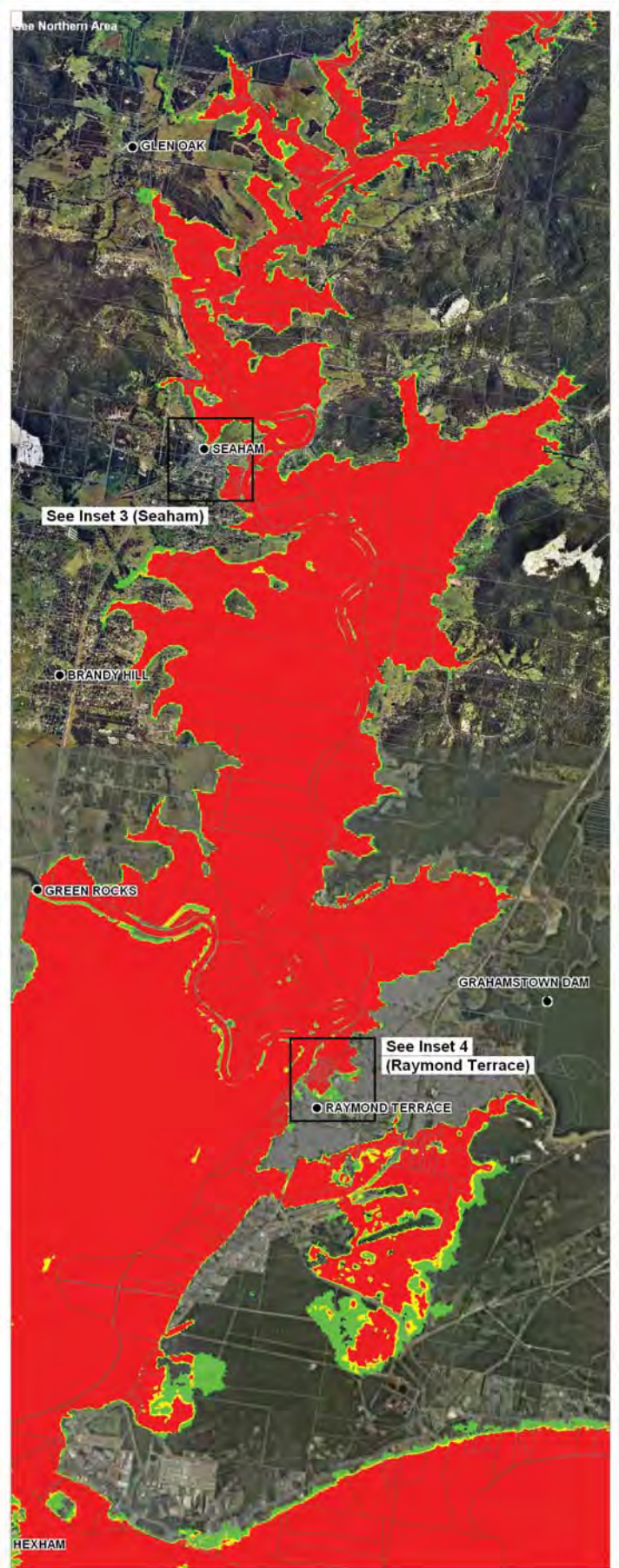
NOTE: Flood Model Simulations include future sea level rise

LEGEND

- Towns
- ▭ Cadastral Boundaries

Provisional Flood Hazard Category

- High Hazard
- Intermediate Hazard
- Low Hazard

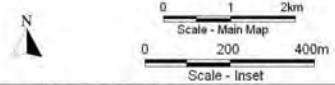


Title:
**Williams River 1% AEP Flood Event
Southern Area - Provisional Hazard**

Figure:
Drawing 21

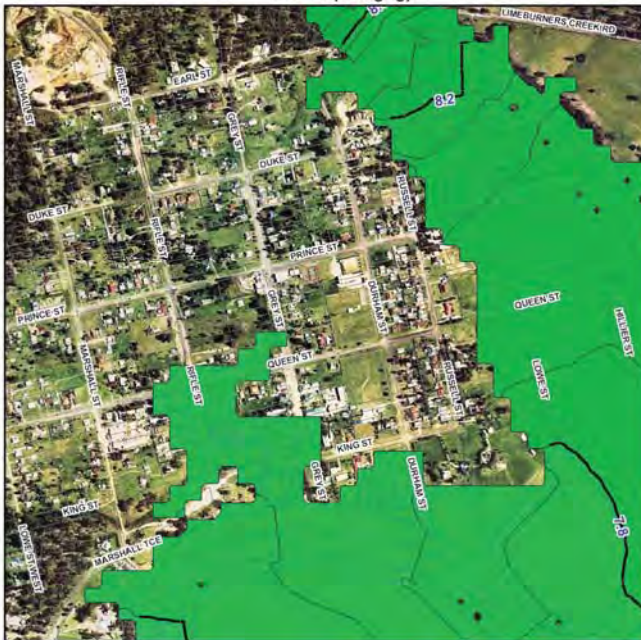
Rev:
A

BMT WBM endeavours to ensure that the information provided in this map is correct at the time of publication. BMT WBM does not warrant, guarantee or make representations regarding the currency and accuracy of information contained in this map.

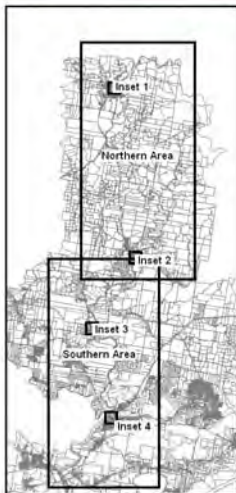




Inset 1 (Dungog)



Inset 2 (Clarence Town)



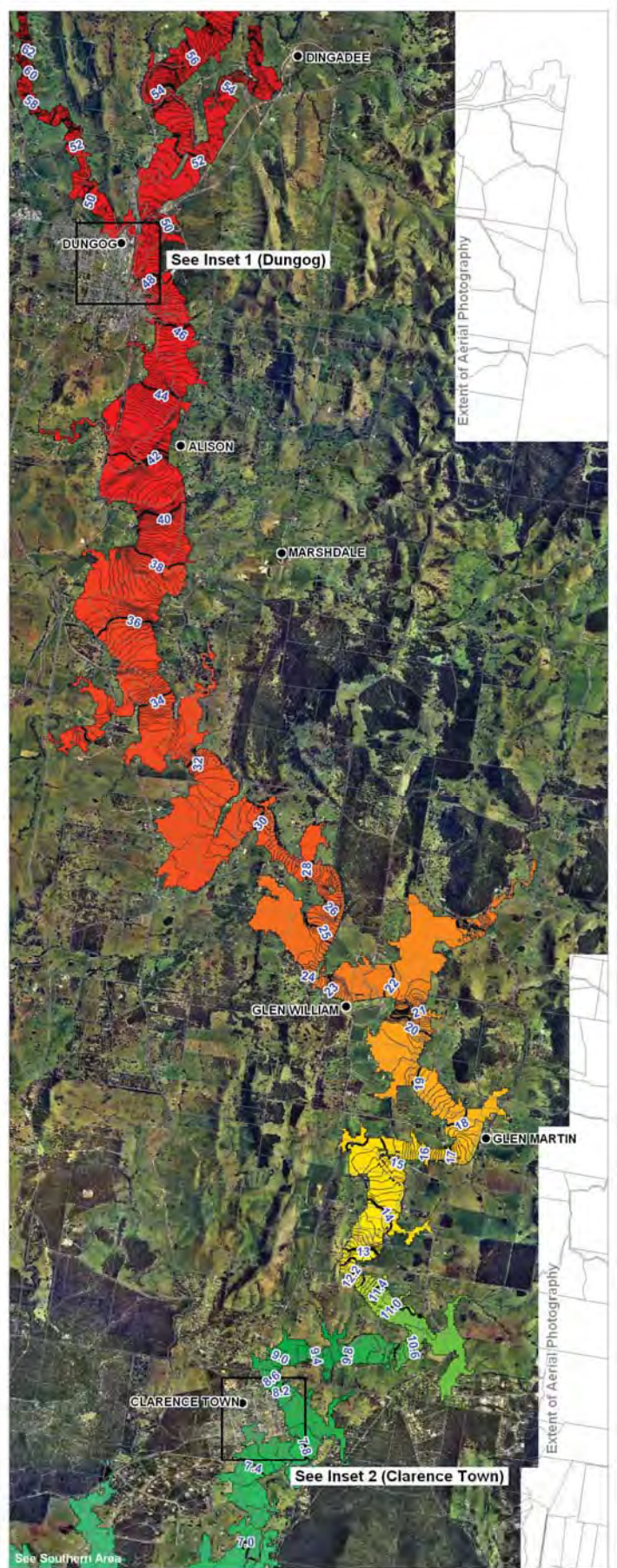
NOTE: Flood Model Simulations include future sea level rise

LEGEND

- Towns
- ▭ Cadastral Boundaries

Modelled Water Level (mAHD)

1.0 to 1.2	4.4 to 4.6	10.6 to 11.0	24.0 to 25.0	56.0 to 58.0
1.2 to 1.4	4.6 to 4.8	11.0 to 11.4	25.0 to 26.0	58.0 to 60.0
1.4 to 1.6	4.8 to 5.0	11.4 to 11.8	26.0 to 28.0	60.0 to 62.0
1.6 to 1.8	5.0 to 5.4	11.8 to 12.2	28.0 to 30.0	62.0 to 64.0
1.8 to 2.0	5.4 to 5.8	12.2 to 12.6	30.0 to 32.0	64.0 to 66.0
2.0 to 2.2	5.8 to 6.2	12.6 to 13.0	32.0 to 34.0	66.0 to 68.0
2.2 to 2.4	6.2 to 6.6	13.0 to 14.0	34.0 to 36.0	68.0 to 70.0
2.4 to 2.6	6.6 to 7.0	14.0 to 15.0	36.0 to 38.0	70.0 to 72.0
2.6 to 2.8	7.0 to 7.4	15.0 to 16.0	38.0 to 40.0	72.0 to 74.0
2.8 to 3.0	7.4 to 7.8	16.0 to 17.0	40.0 to 42.0	74.0 to 76.0
3.0 to 3.2	7.8 to 8.2	17.0 to 18.0	42.0 to 44.0	76.0 to 78.0
3.2 to 3.4	8.2 to 8.6	18.0 to 19.0	44.0 to 46.0	78.0 to 80.0
3.4 to 3.6	8.6 to 9.0	19.0 to 20.0	46.0 to 48.0	80.0 to 82.0
3.6 to 3.8	9.0 to 9.4	20.0 to 21.0	48.0 to 50.0	82.0 to 84.0
3.8 to 4.0	9.4 to 9.8	21.0 to 22.0	50.0 to 52.0	84.0 to 86.0
4.0 to 4.2	9.8 to 10.2	22.0 to 23.0	52.0 to 54.0	
4.2 to 4.4	10.2 to 10.6	23.0 to 24.0	54.0 to 56.0	

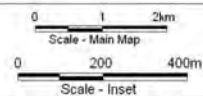


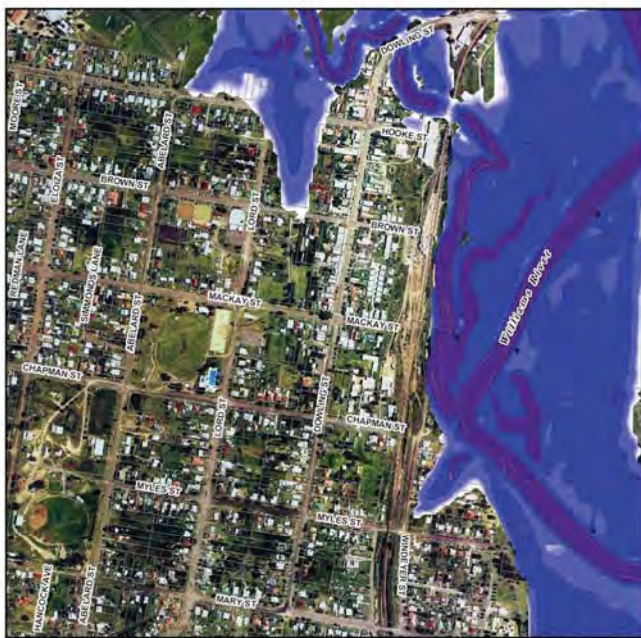
Title:
Williams River 2% AEP Flood Event
Northern Area - Peak Water Level

Figure:
Drawing 22

Rev:
A

BMT WBM endeavours to ensure that the information provided in this map is correct at the time of publication. BMT WBM does not warrant, guarantee or make representations regarding the currency and accuracy of information contained in this map.

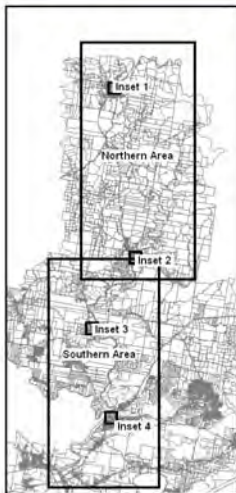




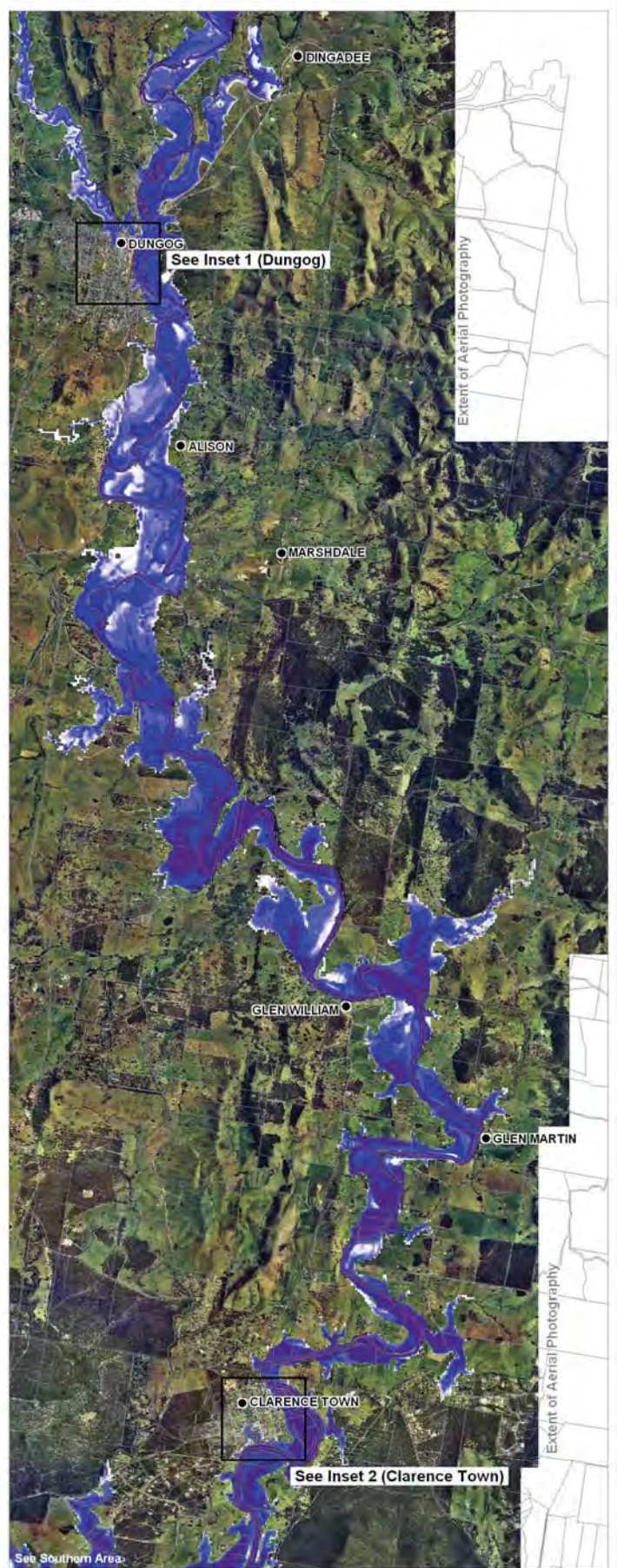
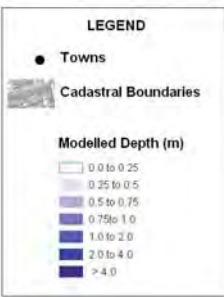
Inset 1 (Dungog)



Inset 2 (Clarence Town)



NOTE: Flood Model Simulations include future sea level rise



Extent of Aerial Photography

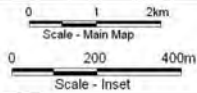
Extent of Aerial Photography

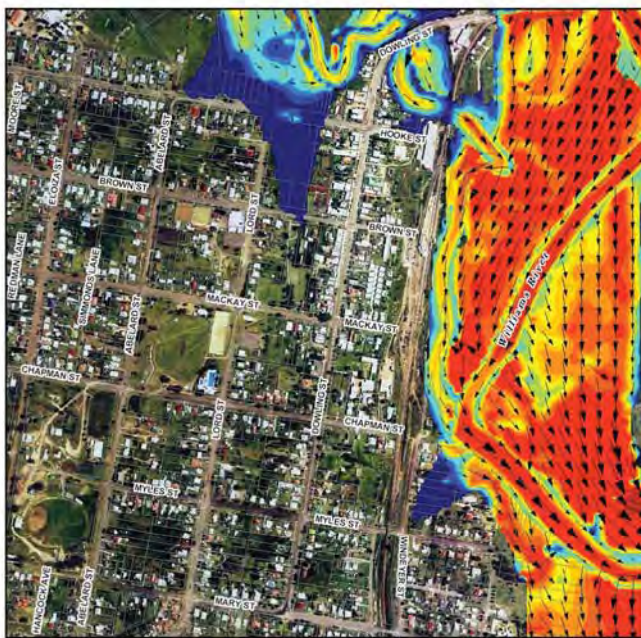
Title:
Williams River 2% AEP Flood Event
Northern Area - Peak Depths

Figure:
Drawing 24

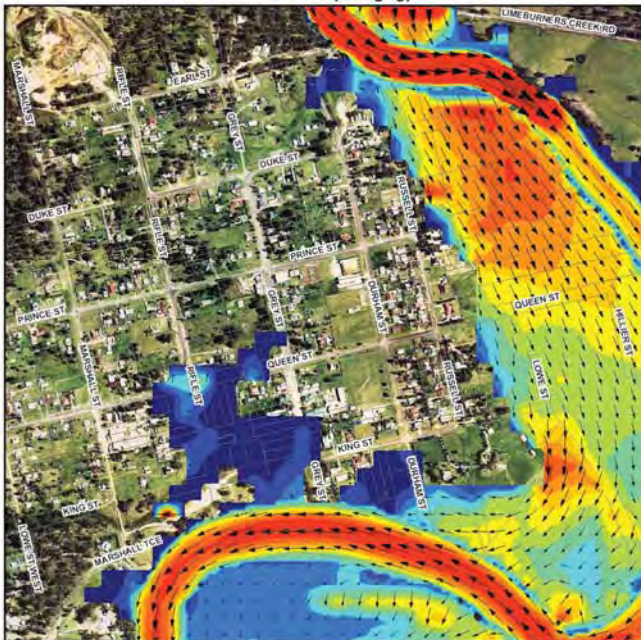
Rev:
A

BMT WBM endeavours to ensure that the information in this map is correct at the time of publication. BMT WBM does not warrant, guarantee or make representations regarding the currency and accuracy of information contained in this map.

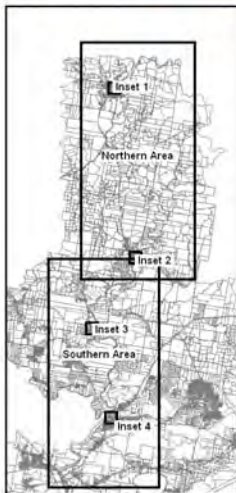




Inset 1 (Dungog)



Inset 2 (Clarence Town)



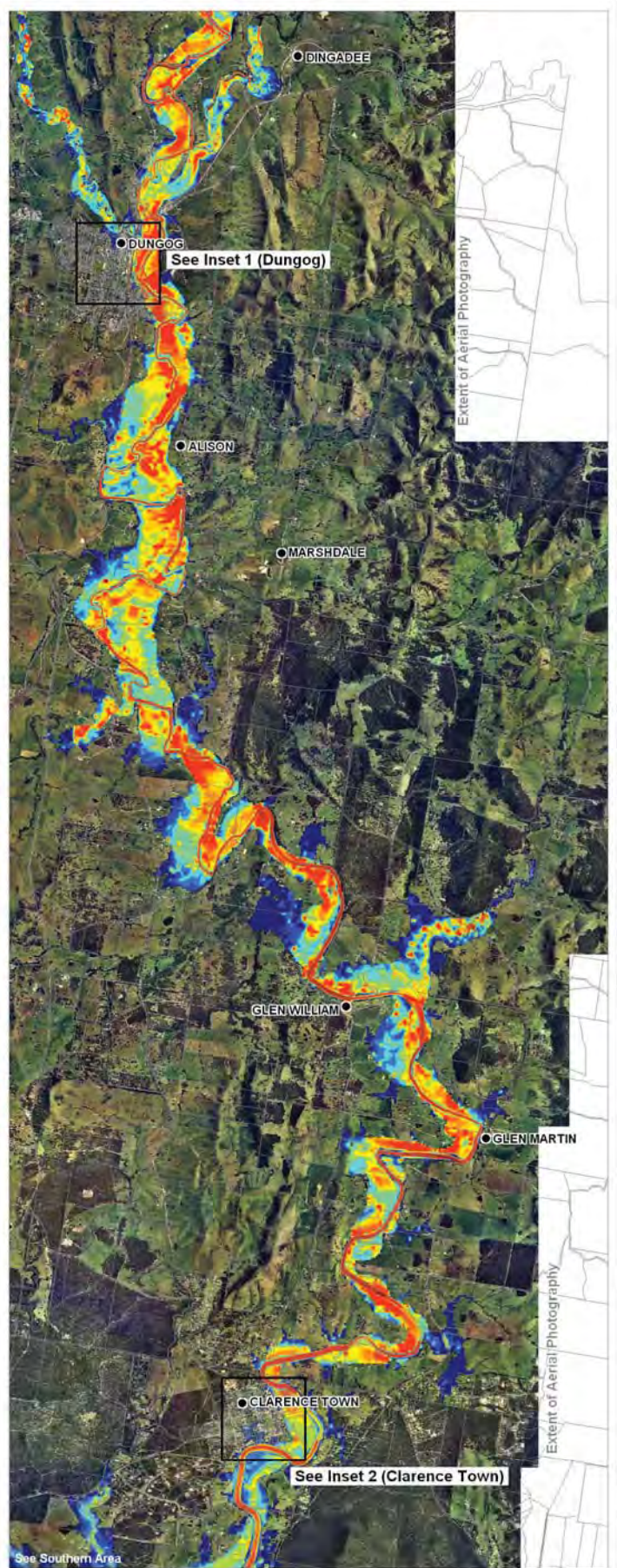
NOTE: Flood Model Simulations include future sea level rise

LEGEND

- Towns
- ▭ Cadastral Boundaries

Modelled Velocity at Peak Depth (m/s)

0.0 to 0.2	1.4 to 1.6
0.2 to 0.4	1.6 to 1.8
0.4 to 0.6	1.8 to 2.0
0.6 to 0.8	2.0 to 3.5
0.8 to 1.0	3.5 to 5.0
1.0 to 1.2	> 5.0
1.2 to 1.4	

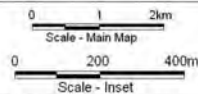


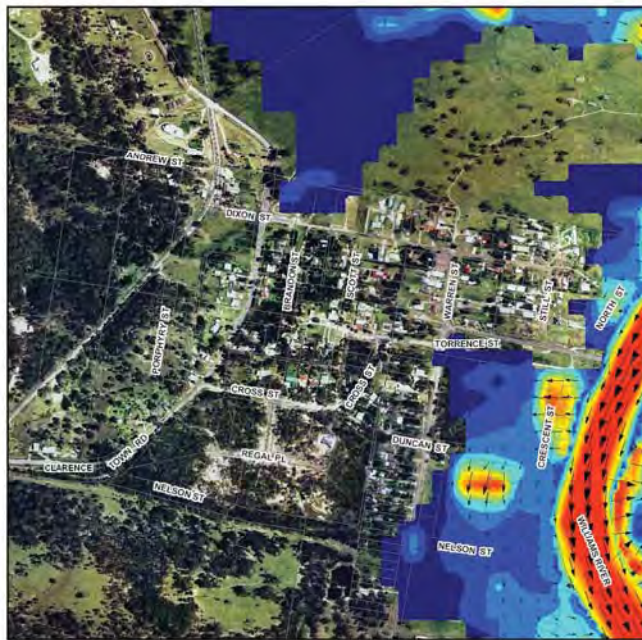
Title:
Williams River 2% AEP Flood Event
Northern Area - Peak Velocities

Figure:
Drawing 26

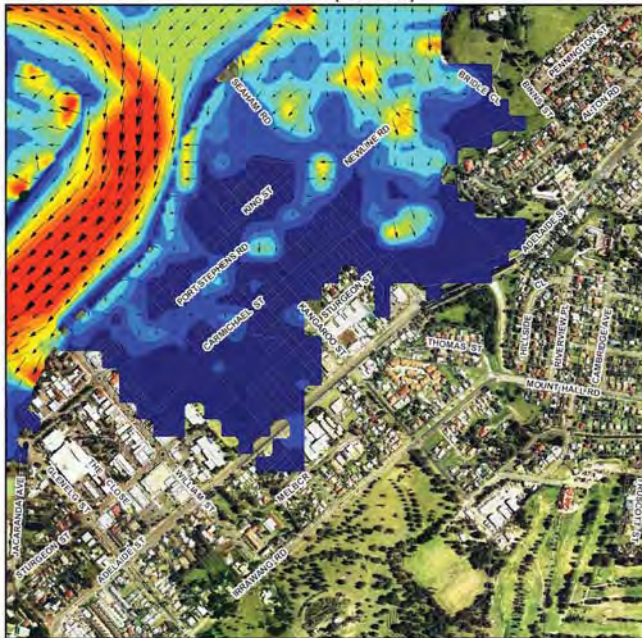
Rev:
A

BMT WBM endeavours to ensure that the information provided in this map is correct at the time of publication. BMT WBM does not warrant, guarantee or make representations regarding the currency and accuracy of information contained in this map.

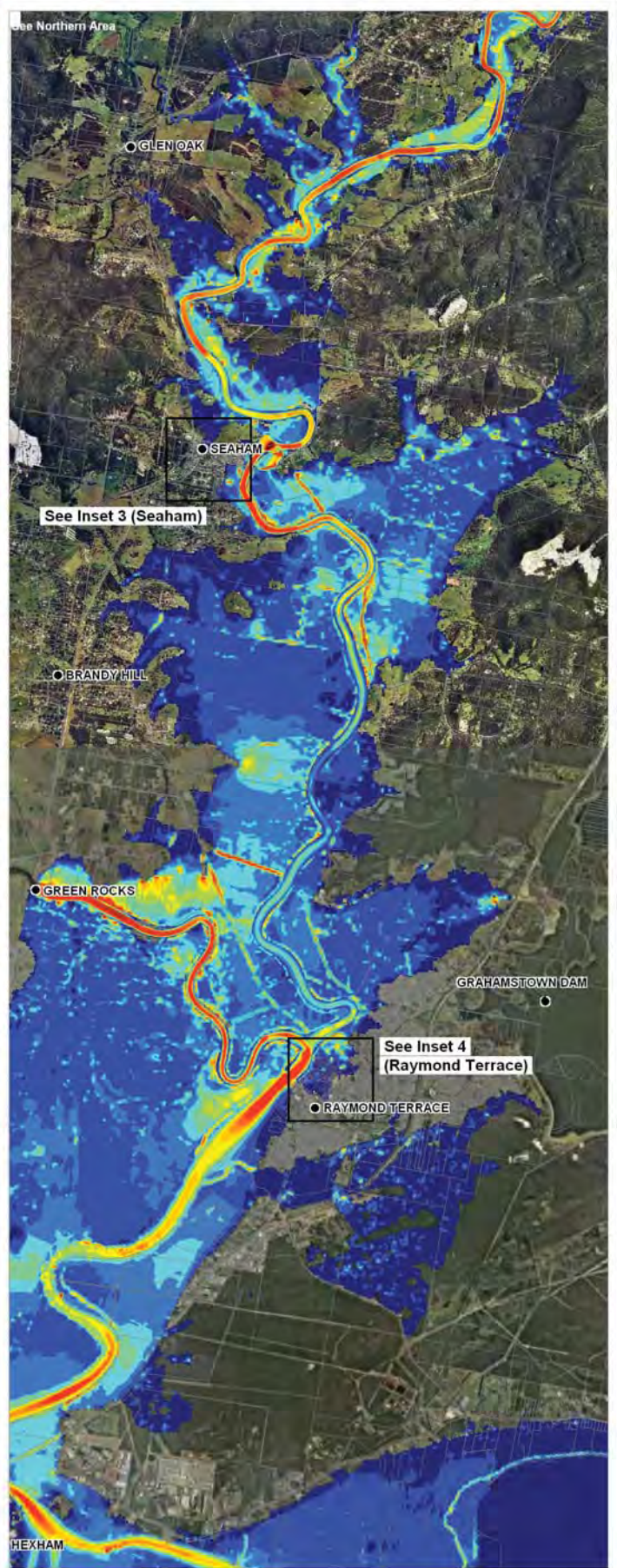




Inset 3 (Seaham)



Inset 4 (Raymond Terrace)



NOTE: Flood Model Simulations include future sea level rise

LEGEND

- Towns
- ▭ Cadastral Boundaries

Modelled Velocity at Peak Depth (m/s)

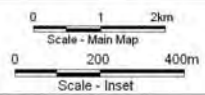
0.0 to 0.2	1.4 to 1.6
0.2 to 0.4	1.6 to 1.8
0.4 to 0.6	1.8 to 2.0
0.6 to 0.8	2.0 to 3.5
0.8 to 1.0	3.5 to 5.0
1.0 to 1.2	> 5.0
1.2 to 1.4	

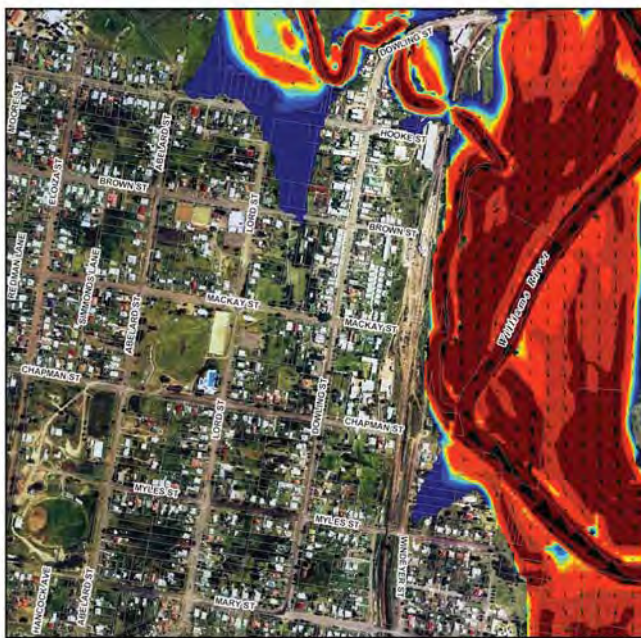
Title:
**Williams River 2% AEP Flood Event
Southern Area - Peak Velocities**

Figure:
Drawing 27

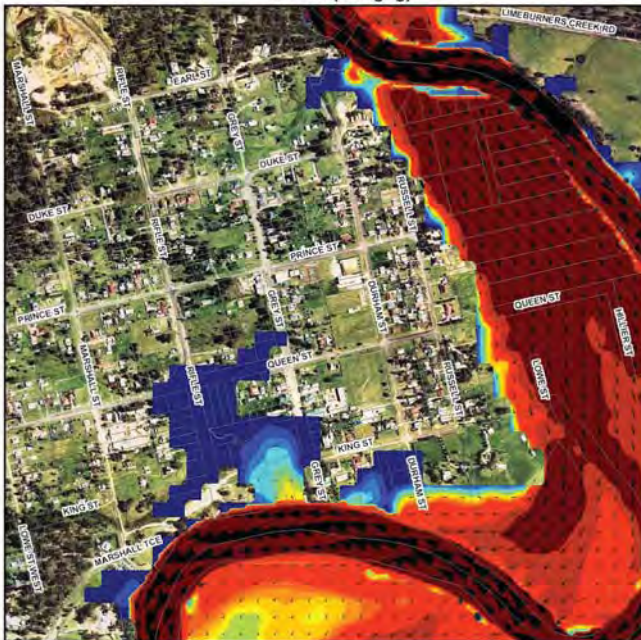
Rev:
A

BMT WBM endeavours to ensure that the information provided in this map is correct at the time of publication. BMT WBM does not warrant, guarantee or make representations regarding the currency and accuracy of information contained in this map.

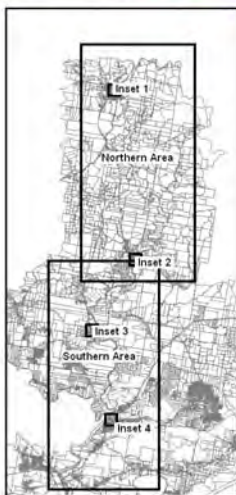




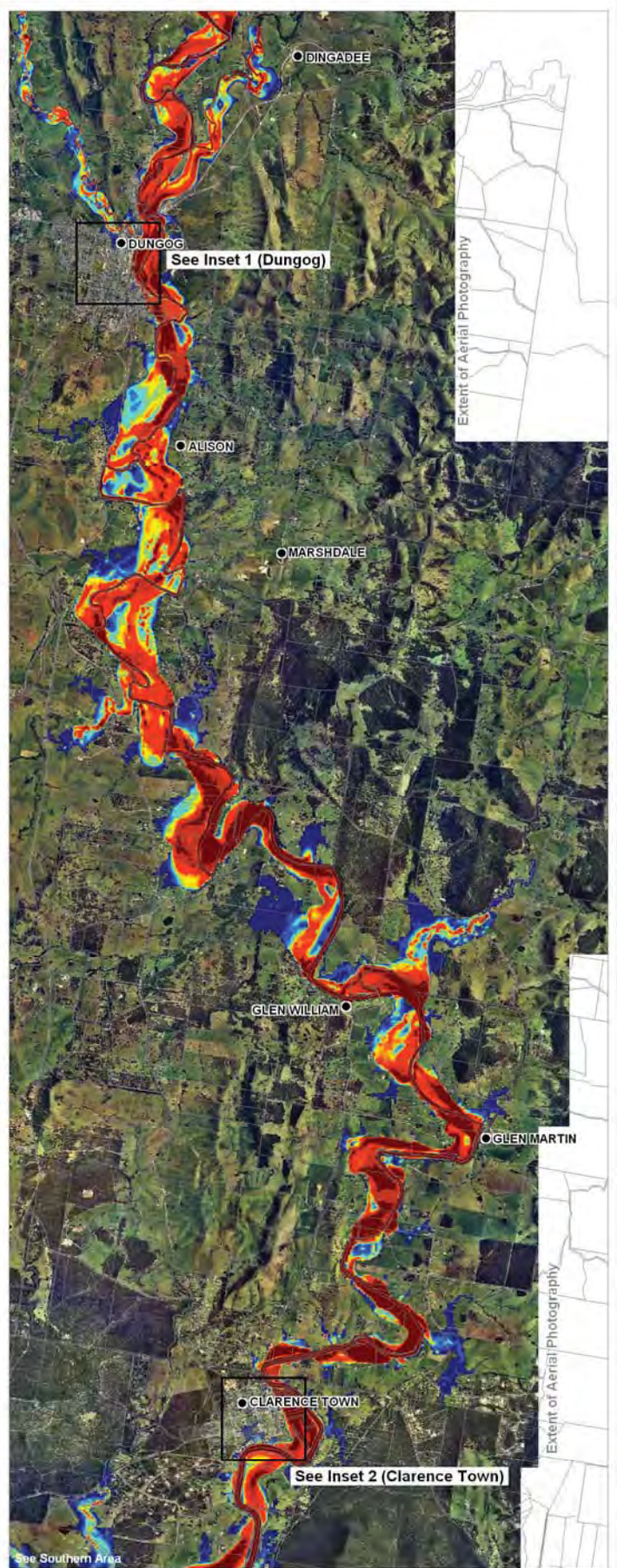
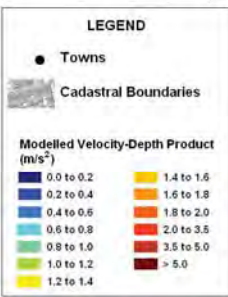
Inset 1 (Dungog)



Inset 2 (Clarence Town)



NOTE: Flood Model Simulations include future sea level rise



Extent of Aerial Photography

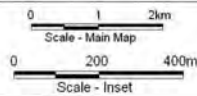
Extent of Aerial Photography

Title:
**Williams River 2% AEP Flood Event
Northern Area - Velocity-Depth Product**

Figure:
Drawing 28

Rev:
A

BMT WBM endeavours to ensure that the information provided in this map is correct at the time of publication. BMT WBM does not warrant, guarantee or make representations regarding the currency and accuracy of information contained in this map.

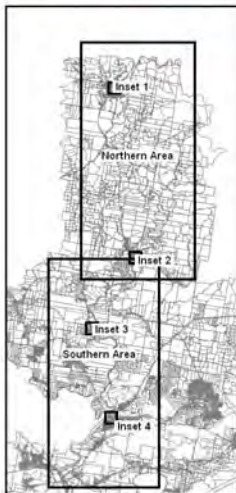




Inset 1 (Dungog)



Inset 2 (Clarence Town)



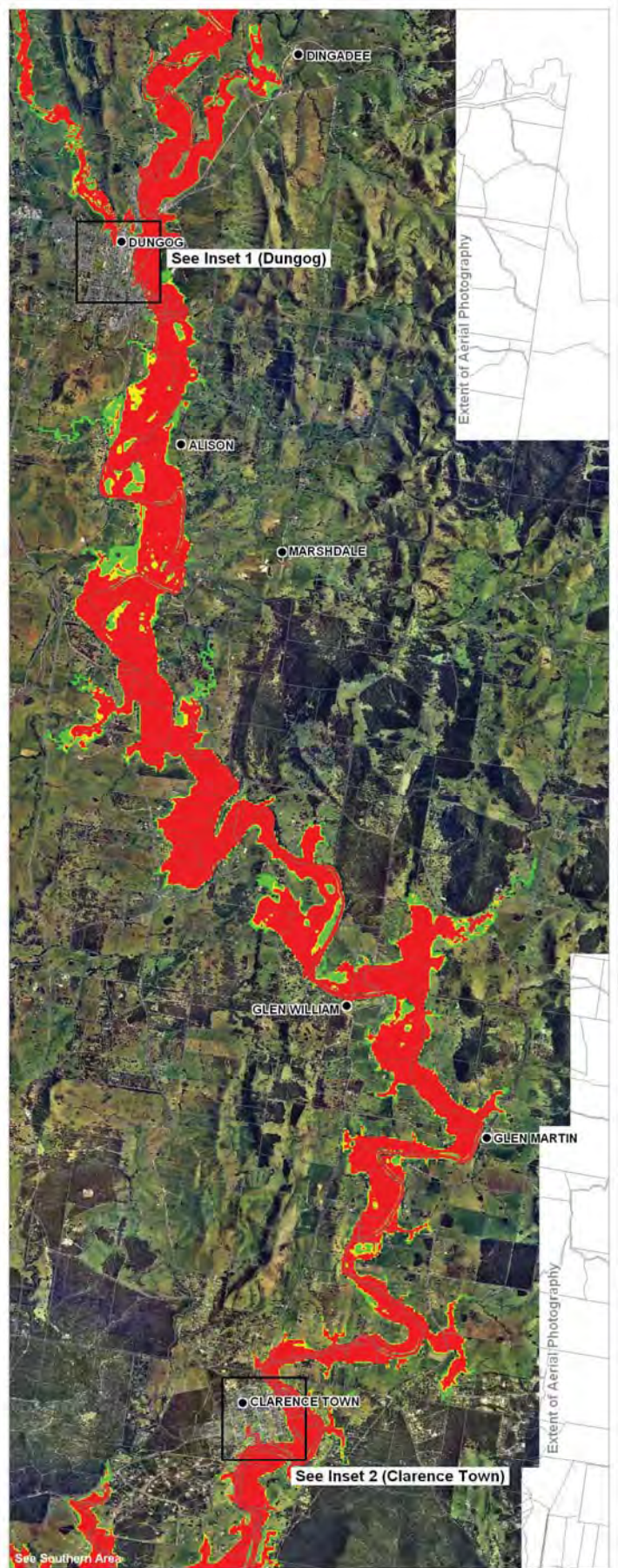
NOTE: Flood Model Simulations include future sea level rise

LEGEND

- Towns
- ▭ Cadastral Boundaries

Provisional Flood Hazard Category

- High Hazard
- Intermediate Hazard
- Low Hazard



Extent of Aerial Photography

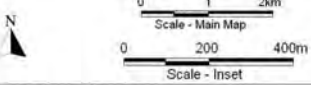
Extent of Aerial Photography

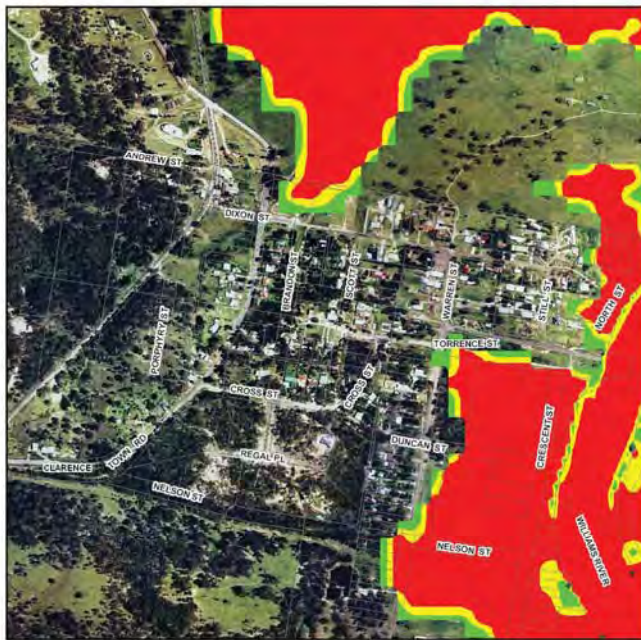
Title:
**Williams River 2% AEP Flood Event
Northern Area - Provisional Hazard**

Figure:
Drawing 30

Rev:
A

BMT WBM endeavours to ensure that the information provided in this map is correct at the time of publication. BMT WBM does not warrant, guarantee or make representations regarding the currency and accuracy of information contained in this map.

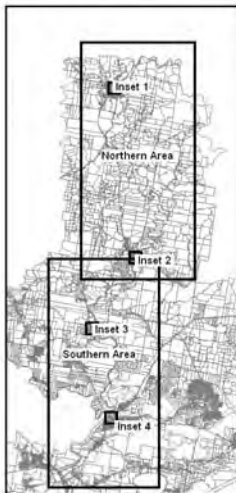




Inset 3 (Seaham)



Inset 4 (Raymond Terrace)



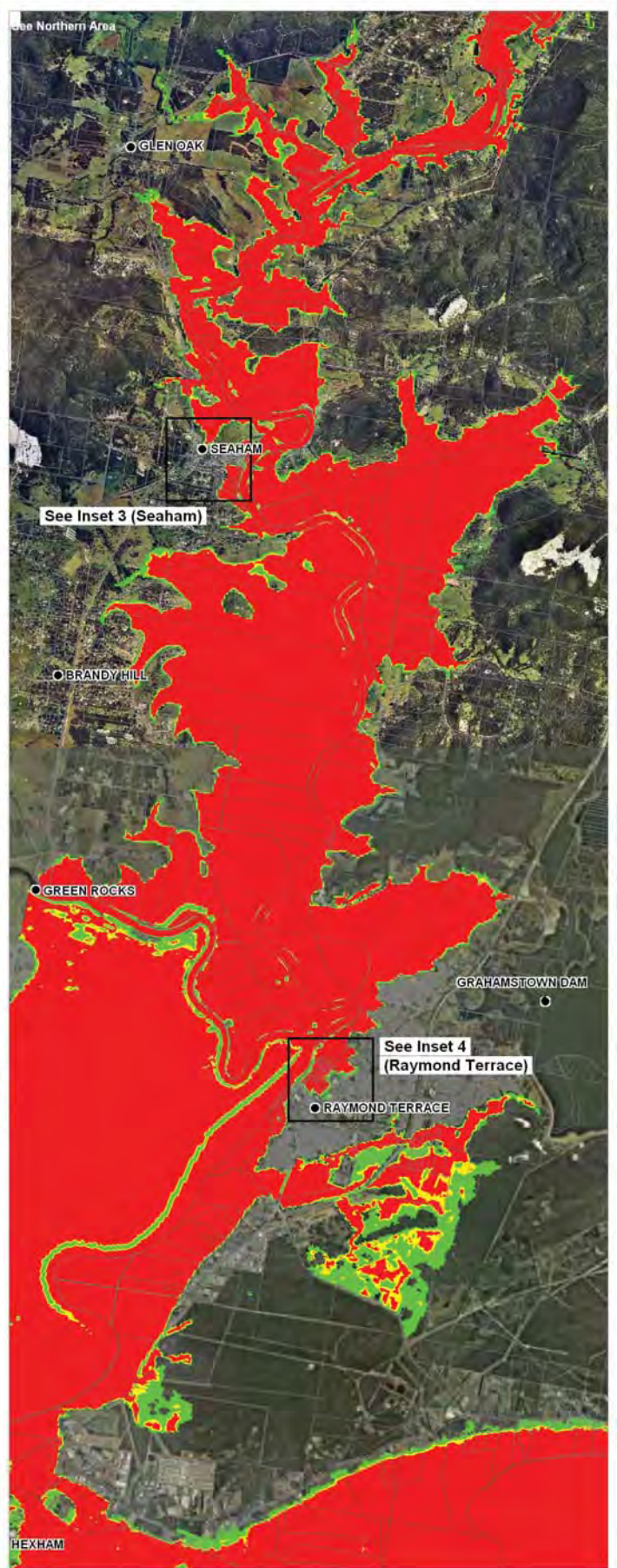
NOTE: Flood Model Simulations include future sea level rise

LEGEND

- Towns
- ▭ Cadastral Boundaries

Provisional Flood Hazard Category

- High Hazard
- Intermediate Hazard
- Low Hazard



Title:
**Williams River 2% AEP Flood Event
Southern Area - Provisional Hazard**

Figure:
Drawing 31

Rev:
A

BMT WBM endeavours to ensure that the information provided in this map is correct at the time of publication. BMT WBM does not warrant, guarantee or make representations regarding the currency and accuracy of information contained in this map.

