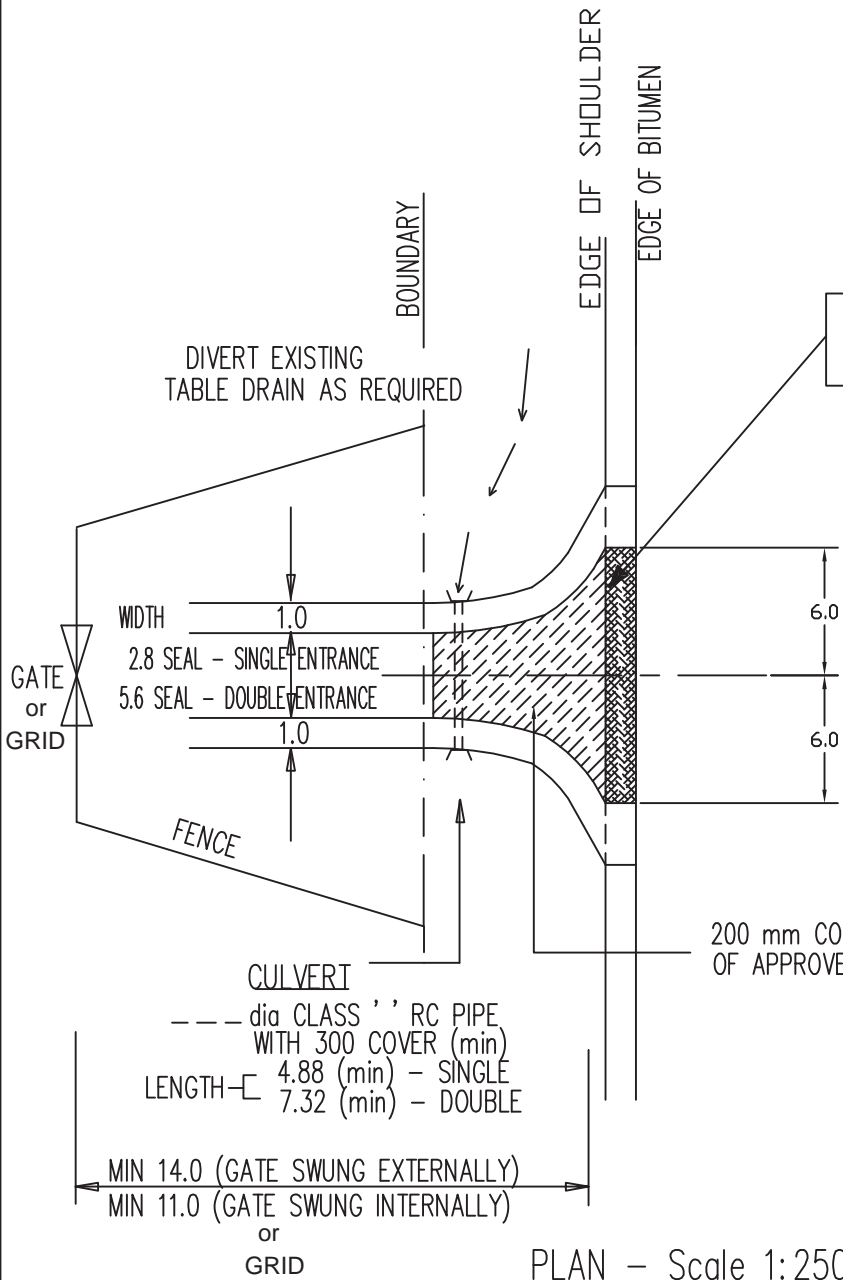


SECTION - Not to Scale



SEALING OPTIONS

- 2 COAT BITUMEN SEAL
- 14mm & 10mm PRECOATED AGGREGATE BITUMEN @ 1.7 & 1.1 l/m sq.
- 40mm Asphaltic Concrete (10mm)
- To be extended to either the gate or grid, or a distance to accommodate the length of a single unit truck approx. 14m long.

NOTE :
ALL DIMENSIONS IN METRES UNLESS SHOWN OTHERWISE

DUNOGG SHIRE COUNCIL
PRIVATE ENTRANCE
RURAL BITUMEN ROADS

STD. DWG. No. SD0015

As amended February 2010