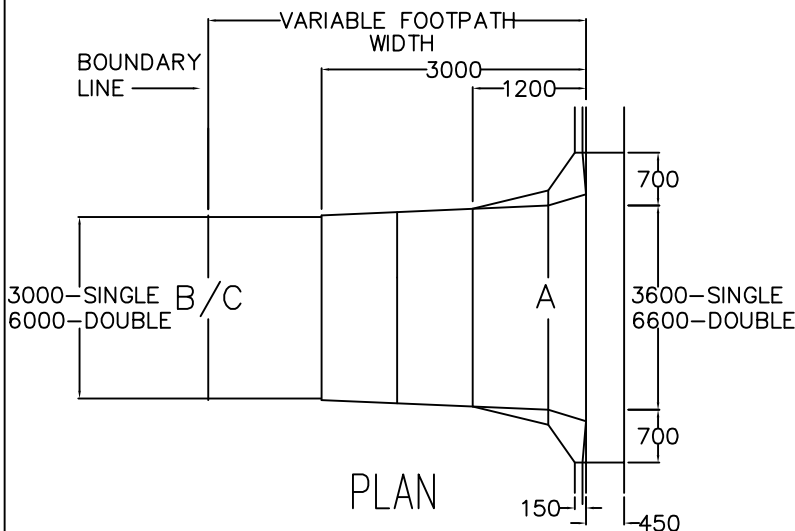


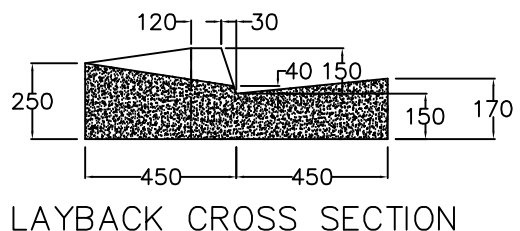
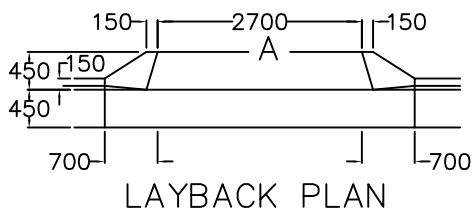
FOOTPATH ALLOCATION	LEVEL FROM INVERT OF KERB		
	A	B *	C *
3000	100 UP	460 UP	140 DOWN
3660	100 UP	592 UP	272 DOWN
4000	100 UP	660 UP	340 DOWN
4500	100 UP	760 UP	440 DOWN

* LEVELS ARE MAX. VARIATIONS IN FOOTPATH PROFILE



CONSTRUCTION MATERIALS

- LAYBACK
 - 150mm REINFORCED CONCRETE F72 OR EQUIVALENT
 - 40 mm BOTTOM COVER
 - 30MPa AT 28 DAYS
- ENTRANCE/ACCESS
 - CONCRETE AS ABOVE
 - 2 COAT BITUMEN SEAL
 - 14mm & 10mm PRECOATED AGGREGATE BITUMEN @ 1.7 & 1.1 l/m²sq.
 - 40mm AC



NOT TO SCALE
ALL DIMENSIONS IN MILLIMETRES UNLESS SHOWN OTHERWISE

DUNGOG SHIRE COUNCIL
PRIVATE ENTRANCE
URBAN BITUMEN ROAD – KERB AND GUTTER

STD. DWG. No. SD0006

MAY 2001